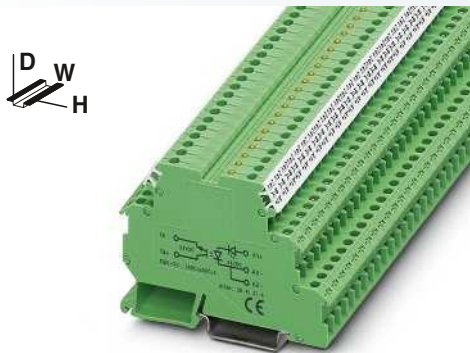
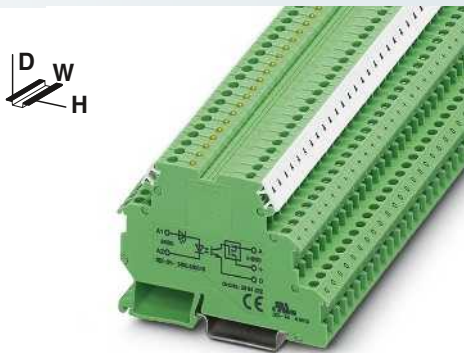


Relay modules in terminal block design - DEK series



with DC voltage output
max. = 3 A



with DC voltage output
max. = 10 A

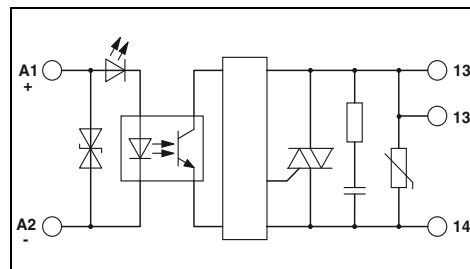
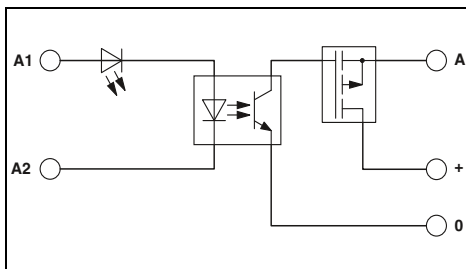
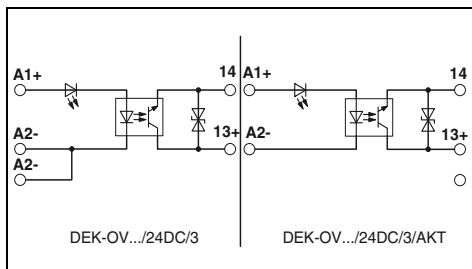


with AC voltage output
max. = 800 mA

ERC

ERC

ERC



Technical data			
①	②	③	⑦
0.8 - 1.2	0.8 - 1.2	0.8 - 1.2	0.8 - 1.2
≥ 0.8	≥ 0.8	≥ 0.8	≥ 0.8
≤ 0.4	≤ 0.4	≤ 0.4	≤ 0.4
11	8.5	7	7
300	300	300	300

Technical data			
①	②	③	
0.8 - 1.2	0.8 - 1.2	0.8 - 1.2	
≥ 0.8	≥ 0.8	≥ 0.8	
≤ 0.4	≤ 0.4	≤ 0.4	
5.1	4.7	3.5	
100	100	100	

Technical data			
①	②	③	
0.8 - 1.2	0.8 - 1.2	0.8 - 1.2	
≥ 0.8	≥ 0.8	≥ 0.8	
≤ 0.4	≤ 0.4	≤ 0.4	
10.2	10.5	10.7	
10	10	10	

Yellow LED, protection against polarity reversal

Yellow LED, protection against polarity reversal, surge protection

Yellow LED, protection against polarity reversal, surge protection

3 V DC ... 30 V DC

5 V DC ... 30 V DC

10 V AC ... 253 V AC (50/60 Hz)

3 A (see derating curve)

10 A (see derating curve)

0.8 A (see derating curve)

Protection against polarity reversal, surge protection
≤ 0.2 V

Protection against polarity reversal, surge protection
≤ 50 mV

RCV circuit
≤ 1 V

2.5 kV (50 Hz, 1 min.)

2.5 kV (50 Hz, 1 min.)

2.5 kV (50 Hz, 1 min.)

-20 °C ... 60 °C

-20 °C ... 60 °C

-20 °C ... 60 °C

IEC 60664, EN 50178, IEC 62103

IEC 60664, EN 50178, IEC 62103

IEC 60664, EN 50178, IEC 62103

2 / III

2 / III

2 / III

0.2 - 2.5 mm² / 0.2 - 2.5 mm² / 24 - 14

0.2 - 2.5 mm² / 0.2 - 2.5 mm² / 24 - 14

0.2 - 4 mm² / 0.2 - 2.5 mm² / 24 - 12

6.2 mm / 80 mm / 56 mm

6.2 mm / 80 mm / 56 mm

6.2 mm / 80 mm / 56 mm

Class A product, see page 625

Class A product, see page 625

Ordering data		
Type	Order No.	Pcs. / Pkt.
DEK-OV- 5DC/ 24DC/ 3	2941361	10
DEK-OV- 12DC/ 24DC/ 3	2941387	10
DEK-OV- 24DC/ 24DC/ 3	2941374	10
DEK-OV- 24DC/ 24DC/ 3/AKT	2964296	10

Ordering data		
Type	Order No.	Pcs. / Pkt.
DEK-OV- 5DC/ 24DC/ 10	2961752	10
DEK-OV- 12DC/ 24DC/ 10	2961749	10
DEK-OV- 24DC/ 24DC/ 10	2964322	10

Ordering data		
Type	Order No.	Pcs. / Pkt.
DEK-OV- 5DC/240AC/800	2964623	10
DEK-OV- 12DC/240AC/800	2964636	10
DEK-OV- 24DC/240AC/800	2964649	10

Accessories			
EB 80- DIK BU	26 A	2715940	1
EB 80- DIK RD	26 A	2715953	1
EB 80- DIK WH	26 A	2715788	1

Accessories			
EB 80- DIK BU	26 A	2715940	1
EB 80- DIK RD	26 A	2715953	1
EB 80- DIK WH	26 A	2715788	1

Accessories			
EB 80- DIK BU	26 A	2715940	1
EB 80- DIK RD	26 A	2715953	1
EB 80- DIK WH	26 A	2715788	1