



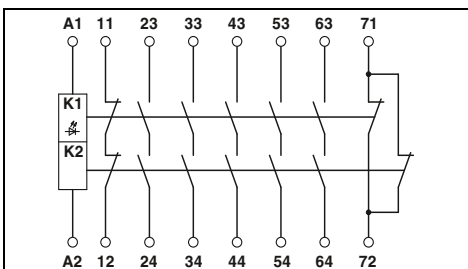
Contact extension with basic insulation



Contact extension for light grid



Contact extension with wide range input (42 - 230 V)



Technical data

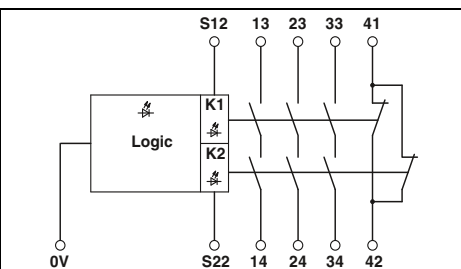
24 V AC/DC
0.8 ... 1.1
92 mA
-
-
20 ms

20 ms

5 enabling current paths
1 signaling current path
1 confirmation current path
AgSnO₂, +0.2 μm Au
250 V AC/DC / 15 V AC/DC
6 A (N/O contact), 3 A (N/C contact)
6 A (N/O contact), 3 A (N/C contact) / 25 mA
0.4 W
4 A (24 V DC); 4 A (230 V AC)
2.5 A (24 V (DC13)); 3 A (230 V (AC 15))
6 A fast blow, C6 (24 V AC/DC) automatic device

-20 °C ... 55 °C
DIN EN 50178/VDE 0160
4 kV / basic insulation (safe isolation, reinforced insulation, and 6 kV between A1/A2, 11/12, 23/24, 71/72 and 33/34, 43/44, 53/54, 63/64)

0.2 - 2.5 mm² / 0.2 - 2.5 mm² / 24 - 12
0.2 - 1.5 mm² / 0.2 - 1.5 mm² / 24 - 16
22.5 mm / 99 mm / 114.5 mm
22.5 mm / 112 mm / 114.5 mm
Class A product, see page 527



Technical data

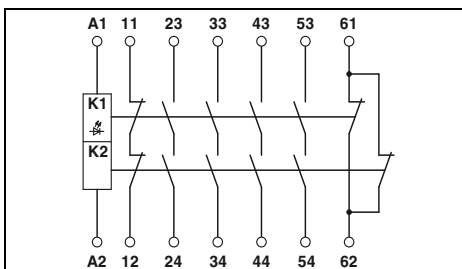
24 V DC
0.85 ... 1.1
70 mA DC
-
-
10 ms

25 ms (manual start)

3 enabling current paths
1 signaling current path
AgSnO₂
250 V AC/DC / 15 V AC/DC
6 A (N/C contact / N/O contact)
6 A / 25 mA
0.4 W
6 A (24 V DC); 5 A (230 V AC)
3 A (24 V (DC13)); 3 A (230 V (AC 15))
10 A gL/gG NEOZED (N/O contact),
4 A gL/gG NEOZED (signaling current path)

-20 °C ... 55 °C
DIN EN 50178/VDE 0160
4 kV / basic insulation (safe isolation, reinforced insulation, and 6 kV between input circuit and enabling current paths)

0.2 - 2.5 mm² / 0.2 - 2.5 mm² / 24 - 12
0.2 - 1.5 mm² / 0.2 - 1.5 mm² / 24 - 16
22.5 mm / 99 mm / 114.5 mm
22.5 mm / 112 mm / 114.5 mm
Class A product, see page 527



Technical data

42 V AC/DC ... 230 V AC/DC
0.85 ... 1.1
40 mA (at 42 V DC) / 35 mA (at 48 V DC)
30 mA (at 60 V DC) / 30 mA (at 110 V AC)
20 mA (at 230 V AC)
20 ms (control via A1 at 42 V DC)
20 ms (control via A1 at 48 V DC)
20 ms (control via A1 at 60 V DC)
40 ms (control via A1 at 110 V AC)
85 ms (control via A1 at 230 V AC)
-

4 enabling current paths
1 signaling current path
1 confirmation current path
AgSnO₂, +0.2 μm Au
250 V AC/DC / 15 V AC/DC
6 A (N/O contact), 6 A (N/C contact)
8 A / 25 mA
0.4 W
4 A (24 V (DC13)); 4 A (230 V (AC 15))
2.5 A (24 V (DC13)); 3 A (230 V (AC 15))
6 A gL/gG NEOZED (enabling current paths),
6 A gL/gG NEOZED (enabling current paths),
Miniature circuit breaker C6 (24 V / 20 A power supply unit)

-20 °C ... 55 °C
DIN EN 50178/VDE 0160
4 kV / basic insulation (safe isolation, reinforced insulation, and 6 kV between input circuit and enabling, signaling, and confirmation current paths)

0.2 - 2.5 mm² / 0.2 - 2.5 mm² / 24 - 12
0.2 - 1.5 mm² / 0.2 - 1.5 mm² / 24 - 16
22.5 mm / 99 mm / 114.5 mm
22.5 mm / 112 mm / 114.5 mm
Class A product, see page 527

Ordering data

Type	Order No.	Pcs. / Pkt.
PSR-SCP- 24UC/URM4/5X1/1X2/B	2981033	1
PSR-SPP- 24UC/URM4/5X1/1X2/B	2981046	1

Ordering data

Type	Order No.	Pcs. / Pkt.
PSR-SCP-24DC/URML4/3X1/1X2/B	2903583	1
PSR-SPP-24DC/URML4/3X1/1X2/B	2903584	1

Ordering data

Type	Order No.	Pcs. / Pkt.
PSR-SCP-42-230UC/URM4/4X1/2X2/B	2902935	1
PSR-SPP-42-230UC/URM4/4X1/2X2/B	2902936	1