

STAINLESS STEEL PIPE FITTINGS

Virtually all of the carbon steel pipe nipples and malleable iron pipe fittings that we sell are also available in Type 316 stainless steel. Some of our more popular items are listed here. These items are all 150lb class Type 316 stainless for Schedule 40 pipe.

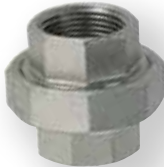
Part No.	Pipe Size	Pipe Size	PRICE EACH
G0808SS... STAINLESS COUPLING			
G0808SS-013-013	1/8"	1/8"	\$ 2.20
G0808SS-025-025	1/4"	1/4"	3.00
G0808SS-038-038	3/8"	3/8"	3.00
G0808SS-050-050	1/2"	1/2"	4.40
G0808SS-075-075	3/4"	3/4"	6.00
G0808SS-100-100	1"	1"	8.80
G0808SS-125-125	1 1/4"	1 1/4"	13.00
G0808SS-150-150	1 1/2"	1 1/2"	13.90
G0808SS-200-200	2"	2"	24.50



G0808SS... STAINLESS REDUCING COUPLING			
G0808SS-038-025			3.20
G0808SS-050-025			3.60
G0808SS-050-038			3.60
G0808SS-075-050			4.40
G0808SS-100-075			7.20
G0808SS-150-100			15.50
G0808SS-200-100			22.10
G0808SS-200-150			22.10
G0808SS-300-200			57.50



G0808SSU... STAINLESS UNION			
G0808SSU-050-050	1/2"	1/2"	9.70
G0808SSU-075-075	3/4"	3/4"	12.50
G0808SSU-100-100	1"	1"	19.00
G0808SSU-125-125	1 1/4"	1 1/4"	28.40
G0808SSU-150-150	1 1/2"	1 1/2"	37.30
G0808SSU-200-200	2"	2"	54.80



G0816SS... STAINLESS BUSHING			
G0816SS-025-013	1/4"	1/8"	1.90
G0816SS-038-025	3/8"	1/4"	2.40
G0816SS-050-025	1/2"	1/4"	2.80
G0816SS-050-038	1/2"	3/8"	2.80
G0816SS-075-050	3/4"	1/2"	4.40
G0816SS-100-050	1"	1/2"	7.20
G0816SS-100-075	1"	3/4"	7.20
G0816SS-125-100	1 1/4"	1"	9.80
G0816SS-150-100	1 1/2"	1"	14.30
G0816SS-150-125	1 1/2"	1 1/4"	14.30
G0816SS-200-075	2"	3/4"	21.10
G0816SS-200-100	2"	1"	21.10
G0816SS-200-125	2"	1 1/4"	21.10
G0816SS-200-150	2"	1 1/2"	21.10
G0816SS-300-200	3"	2"	59.80
G0816SS-400-200	4"	2"	99.90
G0816SS-400-300	4"	3"	99.90



G0848SS... STAINLESS 45° ELBOW			
G0848SS-050-050	1/2"	1/2"	4.40
G0848SS-075-075	3/4"	3/4"	6.20
G0848SS-100-100	1"	1"	11.80
G0848SS-125-125	1 1/4"	1 1/4"	13.30
G0848SS-150-150	1 1/2"	1 1/2"	17.80
G0848SS-200-200	2"	2"	26.20



Part No.	Pipe Size	Pipe Size	PRICE EACH
G0898SS... STAINLESS 90° ELBOW			
G0898SS-013-013	1/8"	1/8"	2.20
G0898SS-025-025	1/4"	1/4"	2.50
G0898SS-038-038	3/8"	3/8"	3.90
G0898SS-050-050	1/2"	1/2"	4.50
G0898SS-075-075	3/4"	3/4"	6.80
G0898SS-100-100	1"	1"	9.60
G0898SS-125-125	1 1/4"	1 1/4"	14.70
G0898SS-150-150	1 1/2"	1 1/2"	19.80
G0898SS-200-200	2"	2"	28.80
G0898SS-300-300	3"	3"	74.00
G0898SS-400-400	4"	4"	129.60



G1698SS... STAINLESS 90° STREET ELBOW			
G1698SS-013-013	1/8"	1/8"	\$ 2.60
G1698SS-025-025	1/4"	1/4"	3.40
G1698SS-038-038	3/8"	3/8"	3.60
G1698SS-050-050	1/2"	1/2"	5.50
G1698SS-075-075	3/4"	3/4"	6.30
G1698SS-100-100	1"	1"	10.70
G1698SS-125-125	1 1/4"	1 1/4"	17.90
G1698SS-150-150	1 1/2"	1 1/2"	21.90
G1698SS-200-200	2"	2"	34.10
G1698SS-300-300	3"	3"	106.40



G08T88SS... STAINLESS TEE			
G08T88SS-013-013	1/8"	1/8"	2.70
G08T88SS-025-025	1/4"	1/4"	4.90
G08T88SS-038-038	3/8"	3/8"	6.00
G08T88SS-050-050	1/2"	1/2"	6.10
G08T88SS-075-075	3/4"	3/4"	9.20
G08T88SS-100-100	1"	1"	16.00
G08T88SS-125-125	1 1/4"	1 1/4"	21.50
G08T88SS-150-150	1 1/2"	1 1/2"	24.90
G08T88SS-200-200	2"	2"	37.50
G08T88SS-300-300	3"	3"	99.80



G0800SS... STAINLESS CAP			
G0800SS-013	1/8"		1.40
G0800SS-025	1/4"		1.70
G0800SS-038	3/8"		2.00
G0800SS-050	1/2"		2.50
G0800SS-075	3/4"		3.10
G0800SS-100	1"		5.20
G0800SS-125	1 1/4"		7.50
G0800SS-150	1 1/2"		9.40
G0800SS-200	2"		14.20



G1600SS... STAINLESS PLUG			
G1600SS-013	1/8"		1.40
G1600SS-025	1/4"		1.60
G1600SS-038	3/8"		1.90
G1600SS-050	1/2"		2.30
G1600SS-075	3/4"		3.50
G1600SS-100	1"		4.50
G1600SS-125	1 1/4"		6.20
G1600SS-150	1 1/2"		8.80
G1600SS-200	2"		11.50



G0008SS... STAINLESS HALF COUPLING			
G0008SS-025	1/4"		1.90
G0008SS-038	3/8"		2.00
G0008SS-050	1/2"		2.80
G0008SS-075	3/4"		3.60
G0008SS-100	1"		6.00

