

# STAINLESS STEEL PIPE FITTINGS

Virtually all of the carbon steel pipe nipples and malleable iron pipe fittings that we sell are also available in Type 316 stainless steel. Some of our more popular items are listed here. These items are all 150lb class Type 316 stainless for Schedule 40 pipe.

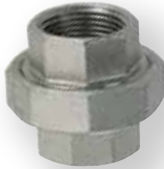
Part No.	Pipe Size	Pipe Size	PRICE EACH
<b>G0808SS... STAINLESS COUPLING</b>			
G0808SS-013-013	1/8"	1/8"	\$ 2.20
G0808SS-025-025	1/4"	1/4"	3.00
G0808SS-038-038	3/8"	3/8"	3.00
G0808SS-050-050	1/2"	1/2"	4.40
G0808SS-075-075	3/4"	3/4"	6.00
G0808SS-100-100	1"	1"	8.80
G0808SS-125-125	1 1/4"	1 1/4"	13.00
G0808SS-150-150	1 1/2"	1 1/2"	13.90
G0808SS-200-200	2"	2"	24.50



<b>G0808SS... STAINLESS REDUCING COUPLING</b>			
G0808SS-038-025			3.20
G0808SS-050-025			3.60
G0808SS-050-038			3.60
G0808SS-075-050			4.40
G0808SS-100-075			7.20
G0808SS-150-100			15.50
G0808SS-200-100			22.10
G0808SS-200-150			22.10
G0808SS-300-200			57.50



<b>G0808SSU... STAINLESS UNION</b>			
G0808SSU-050-050	1/2"	1/2"	9.70
G0808SSU-075-075	3/4"	3/4"	12.50
G0808SSU-100-100	1"	1"	19.00
G0808SSU-125-125	1 1/4"	1 1/4"	28.40
G0808SSU-150-150	1 1/2"	1 1/2"	37.30
G0808SSU-200-200	2"	2"	54.80



<b>G0816SS... STAINLESS BUSHING</b>			
G0816SS-025-013	1/4"	1/8"	1.90
G0816SS-038-025	3/8"	1/4"	2.40
G0816SS-050-025	1/2"	1/4"	2.80
G0816SS-050-038	1/2"	3/8"	2.80
G0816SS-075-050	3/4"	1/2"	4.40
G0816SS-100-050	1"	1/2"	7.20
G0816SS-100-075	1"	3/4"	7.20
G0816SS-125-100	1 1/4"	1"	9.80
G0816SS-150-100	1 1/2"	1"	14.30
G0816SS-150-125	1 1/2"	1 1/4"	14.30
G0816SS-200-075	2"	3/4"	21.10
G0816SS-200-100	2"	1"	21.10
G0816SS-200-125	2"	1 1/4"	21.10
G0816SS-200-150	2"	1 1/2"	21.10
G0816SS-300-200	3"	2"	59.80
G0816SS-400-200	4"	2"	99.90
G0816SS-400-300	4"	3"	99.90



<b>G0848SS... STAINLESS 45° ELBOW</b>			
G0848SS-050-050	1/2"	1/2"	4.40
G0848SS-075-075	3/4"	3/4"	6.20
G0848SS-100-100	1"	1"	11.80
G0848SS-125-125	1 1/4"	1 1/4"	13.30
G0848SS-150-150	1 1/2"	1 1/2"	17.80
G0848SS-200-200	2"	2"	26.20



Part No.	Pipe Size	Pipe Size	PRICE EACH
<b>G0898SS... STAINLESS 90° ELBOW</b>			
G0898SS-013-013	1/8"	1/8"	2.20
G0898SS-025-025	1/4"	1/4"	2.50
G0898SS-038-038	3/8"	3/8"	3.90
G0898SS-050-050	1/2"	1/2"	4.50
G0898SS-075-075	3/4"	3/4"	6.80
G0898SS-100-100	1"	1"	9.60
G0898SS-125-125	1 1/4"	1 1/4"	14.70
G0898SS-150-150	1 1/2"	1 1/2"	19.80
G0898SS-200-200	2"	2"	28.80
G0898SS-300-300	3"	3"	74.00
G0898SS-400-400	4"	4"	129.60



<b>G1698SS... STAINLESS 90° STREET ELBOW</b>			
G1698SS-013-013	1/8"	1/8"	\$ 2.60
G1698SS-025-025	1/4"	1/4"	3.40
G1698SS-038-038	3/8"	3/8"	3.60
G1698SS-050-050	1/2"	1/2"	5.50
G1698SS-075-075	3/4"	3/4"	6.30
G1698SS-100-100	1"	1"	10.70
G1698SS-125-125	1 1/4"	1 1/4"	17.90
G1698SS-150-150	1 1/2"	1 1/2"	21.90
G1698SS-200-200	2"	2"	34.10
G1698SS-300-300	3"	3"	106.40



<b>G08T88SS... STAINLESS TEE</b>			
G08T88SS-013-013	1/8"	1/8"	2.70
G08T88SS-025-025	1/4"	1/4"	4.90
G08T88SS-038-038	3/8"	3/8"	6.00
G08T88SS-050-050	1/2"	1/2"	6.10
G08T88SS-075-075	3/4"	3/4"	9.20
G08T88SS-100-100	1"	1"	16.00
G08T88SS-125-125	1 1/4"	1 1/4"	21.50
G08T88SS-150-150	1 1/2"	1 1/2"	24.90
G08T88SS-200-200	2"	2"	37.50
G08T88SS-300-300	3"	3"	99.80



<b>G0800SS... STAINLESS CAP</b>			
G0800SS-013	1/8"		1.40
G0800SS-025	1/4"		1.70
G0800SS-038	3/8"		2.00
G0800SS-050	1/2"		2.50
G0800SS-075	3/4"		3.10
G0800SS-100	1"		5.20
G0800SS-125	1 1/4"		7.50
G0800SS-150	1 1/2"		9.40
G0800SS-200	2"		14.20



<b>G1600SS... STAINLESS PLUG</b>			
G1600SS-013	1/8"		1.40
G1600SS-025	1/4"		1.60
G1600SS-038	3/8"		1.90
G1600SS-050	1/2"		2.30
G1600SS-075	3/4"		3.50
G1600SS-100	1"		4.50
G1600SS-125	1 1/4"		6.20
G1600SS-150	1 1/2"		8.80
G1600SS-200	2"		11.50



<b>G0008SS... STAINLESS HALF COUPLING</b>			
G0008SS-025	1/4"		1.90
G0008SS-038	3/8"		2.00
G0008SS-050	1/2"		2.80
G0008SS-075	3/4"		3.60
G0008SS-100	1"		6.00

