

## Electric PVC Heater for 1/2" - 2", All Schedules


 120 VAC  
 20 AMP

- Easy to use: preheat for 10 minutes, insert PVC, rotate until pliable, remove and form bend.
- Sturdy double wall metal with fiberglass insulation and reflective interior for fast, even heat.
- Full length door for easy PVC loading and removal.
- Other features include on/off switch, pilot light and carrying handle.
- Heats 24" Long section of pipe.

CAT. NO.	UPC NO.	DESCRIPTION
849	27395	Electric PVC Heater for 1/2" - 2"
27811	27811	Calrod Heating Element

### SPECIFICATIONS

<b>Capacity</b>	1/2" - 2" PVC All Schedules
<b>Power Source</b>	120 VAC 20 Amp or 3000 Watt Generator
<b>Weight</b>	15 lbs. (6.8 kg)

## Electric PVC Heater for 1/2" - 4", All Schedules


 120 VAC  
 20 AMP

- Easy to use: preheat for 10 minutes, open lid and position PVC, close lid, rotate until pliable, open lid, remove PVC and form bend.
- Heavy-duty, insulated metal walls and cover with reflective interior for efficient, even heat.
- Full-length door for easy loading and unloading.
- On/off switch with indicator light.
- Sturdy wheels for easy mobility.
- Use two units in tandem to heat large sweep bends.
- Heats 50" Long section of pipe.

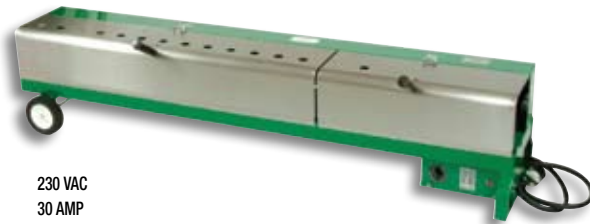
CAT. NO.	UPC NO.	DESCRIPTION
851	35577	Electric PVC Heater for 1/2" - 4"
35592	35592	Calrod Heating Element

### SPECIFICATIONS

<b>Capacity</b>	1/2" - 4" PVC All Schedules
<b>Power Source</b>	120 VAC 20 Amp or 3600 Watt Generator
<b>Length</b>	52" (1321 mm)
<b>Weight</b>	53 lbs. (24 kg)
<b>Wattage</b>	2300

See below for 2" - 4" PVC plugs or 859-4 Plug Set.

## Electric PVC Heater for 1/2" - 6", All Schedules


 230 VAC  
 30 AMP

- Easy to use: preheat for 10 minutes, open lid and position PVC, close lid, rotate until pliable, open lid, remove PVC and form bend. 848 model has motorized rotation.
- Heavy-duty metal construction with reflective interior for fast, efficient heating.
- Has heating chart, timer, and on/off switch with indicator light for added convenience.
- Double doors with piano hinges allow heating shorter lengths with one door open.
- Sturdy wheels for easy mobility.
- Heats 65" Long section of pipe.

### SPECIFICATIONS

<b>Capacity</b>	1/2" - 6" PVC All Schedules
<b>Power Source</b>	230 VAC 30 AMP or 7000 Watt Generator
<b>Length</b>	71" (1803 mm)
<b>Weight</b>	847 - 78 lbs. (36 kg) 848 - 80 lbs. (37 kg)
<b>Wattage</b>	6600

CAT. NO.	UPC NO.	DESCRIPTION
847	30866	Electric PVC Heater for 1/2"-6" All Schedules
848	30867	Electric PVC Heater with Motorized PVC Rotation for 1/2"-6" All Schedules
31092	31092	Motorized PVC rotation kit for 847
857	31093	PVC Roller Support (Optional)
30908	30908	Calrod Heating Element