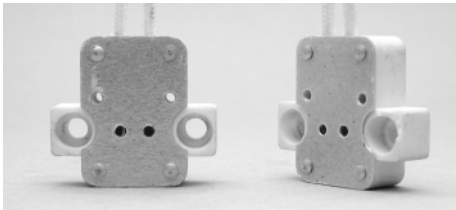
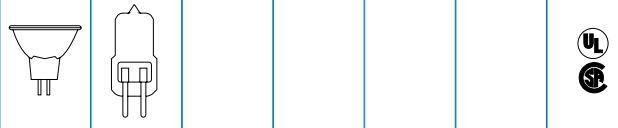


FOR BI-PIN QUARTZ LAMPS

F5

Bi-Pin Lamps

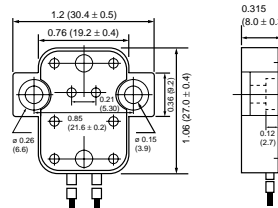
F59 GX5.3 Base Lampholder, 2 Hole Screw Mount



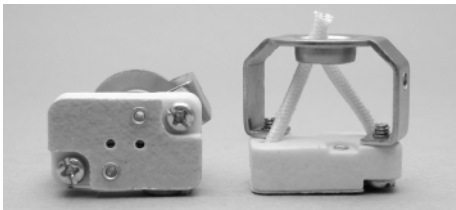
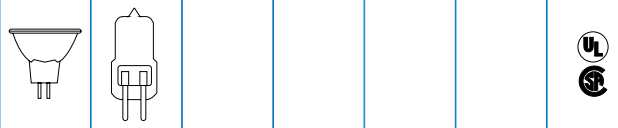
- Rectangular Steatite body with mounting ears
- Copper, nickel-plated double wipe contacts with stainless steel reinforcing springs
- Standard lead wires are 18 AWG SEW-1 (SF1) 200°C, 12" long, stripped 1/4"

- Has 2 mounting ears with 0.150 (3.9 mm) holes to secure socket
- Other wire and terminations are available upon request, contact the factory

- Rated 8A 24V
- UL Listed
- CSA Certified



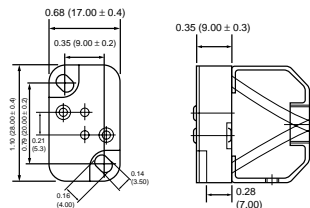
H81H GX5.3 Base Lampholder Offset Screw Mount



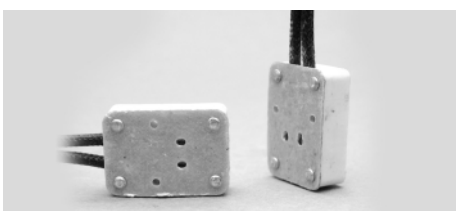
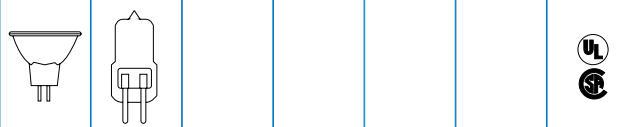
- Rectangular Steatite body
- Copper, nickel-plated double wipe contacts with stainless steel reinforcing springs
- Standard lead wires are 18 AWG SEW-1 (SF1) 200°C, 12" long, stripped 1/4"

- Wires exit through the back of socket
- Other wire and terminations are available upon request, contact the factory
- Has 1/4" IPS threaded hickey to secure to threaded pipe, for greater design flexibility

- Rated 8A 24V
- UL Listed
- CSA Certified



IS126 (F58) GX5.3 Base Rectangular Floating Lampholder



- Rectangular porcelain body
- Copper, nickel-plated double wipe contacts with stainless steel reinforcing springs
- Standard lead wires are 18 AWG SEW-1 (SF1) 200°C, 12" long, stripped 1/4"

- Wire exit on side of the socket
- Floating socket design attaches to fixed position lamp
- Other wire and terminations are available upon request, contact the factory

- Rated 8A 24V
- UL Listed
- CSA Certified

