

# Termination Kits

## Designed Specifically for 3M™ Heating Cables

### Product Specifications



**18-SXG-KIT**...nonhazardous power connection kit includes rubber boot, RTV adhesive, grommet and gland connector. Junction box not included.



**ECA-1-SR-SP** . . . is designed for connecting one or two heating cables to power or for splicing two cables together. The ECA-1-SR KIT components include:

- NEMA 7 junction box
- Pipe-mounted expediter
- 2 stainless steel pipe attachment bands
- Heater cable grommet
- 2 power connection boots (TBX-3L)
- RTV adhesive
- Wire fasteners and grounding splice lug



**ECT-2-SR** . . . is designed for connecting two heating cables to power or for splicing three cables together. The ECT-2-SR KIT components include:

- NEMA 7 junction box
- Pipe-mounted expediter
- Third-cable entry assembly
- 2 stainless steel pipe attachment bands
- Heater cable grommets
- 3 power connection boots (TBX-3L)
- RTV adhesive
- Wire fasteners and grounding splice lug



**ET-6C**... end termination kits are designed to properly terminate the end (away from power) of an SX heat tracing circuit. Each kit includes two rubber end caps plus RTV adhesive.



**ET-4S**...end termination kits are designed specifically for Roof & Gutter applications. Each kit contains one U.V. resistant Heat Shrink end cap.



**HS-PBSK**... Heat shrink inline splice kit designed to join two heater cables together. Kit components include a heat shrink sleeve, two silicone sleeves, two butt connectors, and a caution label. Used in ordinary non-hazardous locations.

# Termination Kits

## Designed Specifically for 3M™ Heating Cables



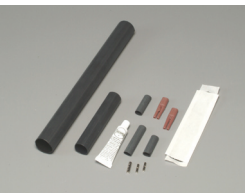
**HS-TBSK...**Heat shrink Tee splice kit designed to join three heater cables together. Kit components include one heat shrink tube, one heat shrink tee, two silicone tubes, two parallel connectors, one butt connector, one tie wrap, and one caution label. Used in ordinary non-hazardous locations.



**KSR-CFK...**Circuit fabrication kit is designed to fabricate a KSR circuit with one power connection boot and one end cap. Both power and end terminations must be made in UL listed or CSA Approved junction boxes.



**KSR-EJK...**Expansion joint kit is designed to allow KSR cables to cross a concrete expansion or construction joint. When installed, the kit will allow normal expansion and contraction of the substrate without straining or damaging the heating circuit. Easy to use kit includes reinforced flexible sleeve and RTV sealant.



**KSR-SR-DB...**Cable splice kit is designed to fabricate an in-line splice between two pieces of overjacketed cable. The kit allows for field fabrication of heating cable should the cable become damaged during installation. Easy-to-use kit includes splice lugs, self-vulcanizing tape and heat shrink tubing.



**PCA-1-SR...**is designed for connecting up to three heating cables to power. The PCA-1-SR may also be used as an in-line or T- splice connection kit.

The PCA-1-SR kit components include:

- NEMA 4X junction box
- Pipe-mounted expediter
- 2 stainless steel pipe attachment bands
- Heater cable grommet
- 3 power connection boots (TBX-3L)
- RTV adhesive
- Ground wire extension lead with lug
- Wire fasteners



**PCS-1-SR...**re-enterable in-line or T-splice kit is designed to fabricate outside-the-insulation splices of 3M TTS cables.

The PCS-1-SR kit components include:

- NEMA 4X pipe-mounted expediter with splice cover
- 2 stainless steel pipe attachment bands
- Heater cable grommet
- 3 power connection boots (TBX-3L)
- RTV adhesive
- Wire fasteners and grounding splice lug