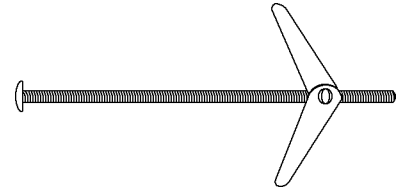


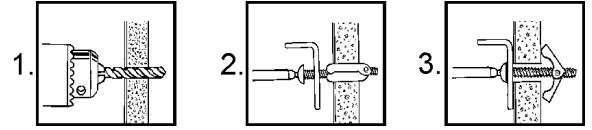
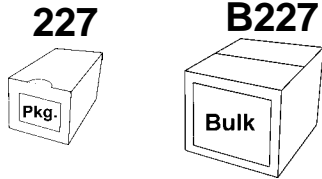
227 Series

TOGGLE BOLTS

Zinc Plated Medium Duty
Hollow Wall Anchor



Toggle Bolts are a hollow wall anchoring device specifically used in block, drywall, and other hollow materials. The anchor has a dual wing spread that opens automatically with an internal spring. Once the anchor is pushed through and tightened, the wing is calibrated to sit flush against the backside of the wall. This provides even weight distribution and prevents pull out. Drill required hole through the material. Insert bolt through fixture and attach wing. Fold wings completely back and insert through hole. Push through until wings are released and then pull back so that wings sit flush with the back of the material. Tighten bolt until firmly in place.



	3/8" Wallboard		1/2" Wallboard		5/8" Wallboard		3/4" Wallboard	
Anchor Size	Tension	Shear	Tension	Shear	Tension	Shear	Tension	Shear
1/8"	150	180	200	205	250	265	290	310
3/16"	170	210	245	280	315	350	385	420
1/4"	285	310	310	350	350	385	420	445
5/16"	320	360	330	420	365	450	425	510
3/8"	325	370	340	440	385	470	450	530

LIST PRICE PER 100 PIECES

Note: Please use Series and Size No. when ordering:

Example: 1/8 x 2 Toggle Heads
Series Size No.
Case - 227 -697
Bulk - B227 -697

Size No.	Anchor Diameter and Length	CASE-Plated 227	Pkg Qty	Case Qty	BULK-Plated B227	Bulk Qty	Approx. Wt. 100 Pcs.	Hole Drill Size
MACHINE SCREWS								
-684	1/8X2	\$17.69	30	810	Refer to the 204S Screw Catalogue pages L1 & L2 for bulk machine screws.	1.6	3/8	
-685	1/8X3	19.81	25	400		1.8	3/8	
-686	1/8X4	24.41	25	400		2.4	3/8	
-688	3/16X2	21.93	20	320		3.2	9/16	
-690	3/16X3	24.76	20	320		3.6	9/16	
-691	3/16X4	26.17	20	320		4.2	9/16	
-692	1/4X3	31.83	12	192	Toggle Heads in bulk are listed below.	7.0	3/4	
-694	1/4X4	36.08	12	192		8.0	3/4	
TOGGLE HEADS								
-697	1/8	-	-	-	\$11.78	3200	0.8	3/8
-698	3/16	-	-	-	14.64	1200	1.5	1/2
-699	1/4	-	-	-	16.55	800	2.7	5/8
-700	5/16	-	-	-	36.75	500	2.9	3/4
-701	3/8	-	-	-	43.29	400	2.9	1

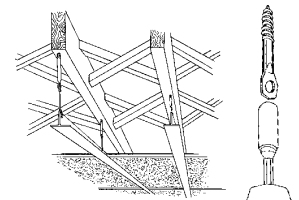
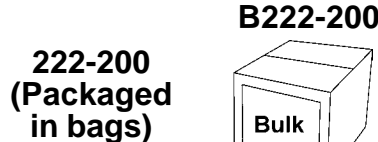
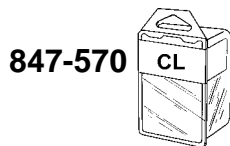
222 Series

TIE WIRE ACOUSTIC LAG SCREWS

Zinc Plated
Drop Ceiling Fastener



Paulin Tie Wire Screws are used for drop ceiling applications in wood. They are specifically designed to withhold the weight of t-bar drop ceiling construction. Drill a 3/16" pilot hole to the depth of the allocated screw. Using the Paulin Lag Screw Driver (847-570), insert the flat head into the driver and tighten until resistance is felt.



Note: Please use Series and Size No. when ordering:

Example: Lag Screw Driver
Series Size No.
Each - 847 -570
Example: 1/4x3 Tie Wire Screws
Series Size No.
Case - 222 -200
Bulk - B222 -200

222-400 - LIST PRICE PER 100 PIECES
847-570 - LIST PRICE PER EACH

Size No.	Anchor Diameter and Length	CASE-Plated 222	Pkg Qty	Case Qty	BULK-Plated B222	Bulk Qty	Approx. Wt. 100 Pcs.	Hole Drill Size
TIE WIRE SCREW								
222-200	1/4x3	\$13.23	50	1000	\$11.90	2000	2.3	3/16
LAG SCREW DRIVER								
847-570	-	9.00	EACH	-	-	-	-	-