

Space-Maker Conduit Hubs

Threaded for Rigid Conduit & IMC

Type CH & Type CH-T

Use:

Type CH - General purpose, suitable for use with heavy wall cabinets

Type CH-T - Insulated throat form with bonding screw. Provides a more vibration resistant connection with assured ground continuity

Features:

- Female bushed nipple type
- Female thread for rigid conduit and IMC
- Takes less space
- Recessed O-ring seal outside the box provides a watertight threaded hub on enclosures.
- Suitable for use with service entrance conduit.

Material/Finish:

Malleable Iron/Zinc Plated

Optional Finish:

For additional corrosion protection, specify Mechanically Galvanized
Contact your local representative for pricing and availability.

Third Party Certification:



UL Listed: E-11853
UL Listed as suitable for use in wet locations.



CSA Certified: 009795

Suitable for use in hazardous locations as follows:

Class I, Div. 2
Class III, Div. 1, 2
Per NEC 501-4(b), 501.10(b)(4),
502-4(a)(2), 503-3(a)

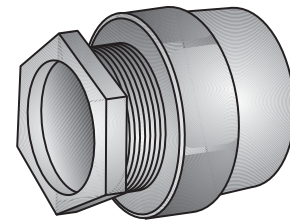
Applicable Third Party Standards:

UL Standard: 514B
CSA Standard: C22.2 No. 18
Fed. Spec: W-F-408E
NEMA: FB-1
• NEMA: FB-1
• NEMA: 4
• NEMA: 12

Notes:

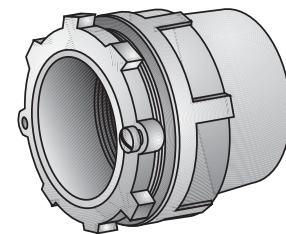
Minimum wall thickness that can be accommodated is $\frac{1}{32}$ ".

Trade Size (inches)	Catalog Number	Dimensions in Inches			Max. Box Wall Thick.
		B	C	A Female Tapered NPSM	
$\frac{1}{2}$	CH-50	$1\frac{1}{8}$	$1\frac{1}{4}$	$\frac{1}{2}$ - 14	$\frac{5}{32}$
$\frac{3}{4}$	CH-75	$1\frac{1}{4}$	$1\frac{5}{8}$	$\frac{3}{4}$ - 14	$\frac{9}{32}$
1	CH-100	$1\frac{3}{8}$	$1\frac{3}{4}$	1 - 11 $\frac{1}{2}$	$\frac{5}{16}$
$1\frac{1}{4}$	CH-125	$1\frac{3}{4}$	$2\frac{1}{4}$	$1\frac{1}{4}$ - 11 $\frac{1}{2}$	$\frac{15}{32}$
$1\frac{1}{2}$	CH-150	$1\frac{7}{8}$	$2\frac{1}{2}$	$1\frac{1}{2}$ - 11 $\frac{1}{2}$	$\frac{1}{2}$
2	CH-200	$1\frac{3}{4}$	$3\frac{1}{8}$	2 - 11 $\frac{1}{2}$	$2\frac{1}{32}$
$2\frac{1}{2}$	CH-250	$2\frac{1}{2}$	$3\frac{3}{4}$	$2\frac{1}{2}$ - 8	$2\frac{1}{32}$
3	CH-300	$3\frac{3}{8}$	$4\frac{7}{8}$	3 - 8	$2\frac{3}{32}$
$3\frac{1}{2}$	CH-350	$2\frac{3}{4}$	5	$3\frac{1}{2}$ - 8	$1\frac{1}{16}$
4	CH-400	$2\frac{3}{4}$	$5\frac{1}{2}$	4 - 8	$\frac{5}{8}$
5	CH-500	$2\frac{3}{4}$	$6\frac{7}{8}$	5 - 8	$\frac{5}{8}$
6	CH-600	$2\frac{3}{4}$	$7\frac{1}{4}$	6 - 8	$1\frac{15}{16}$

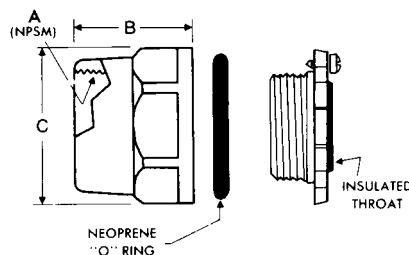


Type CH

Trade Size (inches)	Insulated Throat Catalog Number	Dimensions in Inches			Max. Box Wall Thick.
		B	C	A Female Tapered NPSM	
$\frac{1}{2}$	CH-50T	$1\frac{1}{8}$	$1\frac{1}{4}$	$\frac{1}{2}$ - 14	$\frac{1}{16}$
$\frac{3}{4}$	CH-75T	$1\frac{1}{4}$	$1\frac{5}{8}$	$\frac{3}{4}$ - 14	$\frac{3}{32}$
1	CH-100T	$1\frac{3}{8}$	$1\frac{3}{4}$	1 - 11 $\frac{1}{2}$	$\frac{1}{16}$
$1\frac{1}{4}$	CH-125T	$1\frac{3}{4}$	$2\frac{1}{4}$	$1\frac{1}{4}$ - 11 $\frac{1}{2}$	$\frac{3}{16}$
$1\frac{1}{2}$	CH-150T	$1\frac{7}{8}$	$2\frac{1}{2}$	$1\frac{1}{2}$ - 11 $\frac{1}{2}$	$\frac{7}{32}$
2	CH-200T	$1\frac{3}{4}$	$3\frac{1}{8}$	2 - 11 $\frac{1}{2}$	$\frac{7}{32}$
$2\frac{1}{2}$	CH-250T	$2\frac{1}{2}$	$3\frac{3}{4}$	$2\frac{1}{2}$ - 8	$\frac{3}{16}$
3	CH-300T	$2\frac{5}{8}$	$4\frac{7}{8}$	3 - 8	$\frac{3}{16}$
$3\frac{1}{2}$	CH-350T	$2\frac{3}{4}$	5	$3\frac{1}{2}$ - 8	$\frac{3}{16}$
4	CH-400T	$2\frac{3}{4}$	$5\frac{1}{2}$	4 - 8	$\frac{1}{8}$
5	CH-500T	$2\frac{3}{4}$	$6\frac{7}{8}$	5 - 8	$\frac{1}{4}$
6	CH-600T	$2\frac{3}{4}$	$7\frac{1}{4}$	6 - 8	$\frac{1}{4}$



Type CH-T



Raintight Conduit Hubs

Threaded for Rigid Conduit & IMC

Type CHM & Type CHM-T

Use:

Type CHM - General Purpose Fitting.
Type CHM-T - Insulated Throat form with Bonding Locknut.

Features:

- Male thread type
- Tapered female thread for rigid conduit and IMC
- Recessed O-ring seal assures watertight and dust tight connections
- Type CHM-T with insulated throat and bonding locknut is suitable for service entrance application

Material/Finish:

Malleable Iron/Zinc Electroplated

Optional Finish:

For additional corrosion protection, specify Mechanically Galvanized
Contact your local representative for pricing and availability.

Third Party Certification:



UL Listed: 11853
UL Listed as suitable for wet locations.



CSA Certified: 009795
Raintight.
Suitable for use in hazardous locations as follows:
Class I, Div. 2
Class II, Div. 1, 2
Class III, Div. 1, 2
Per NEC 501-4(b), 502-4(a), 503-3(a)

Applicable Third Party Standards:

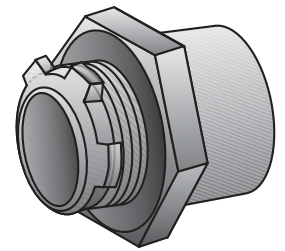
UL Standard: 514B
CSA Standard: C22.2 No. 18
Fed. Spec: W-F-408E

- NEMA: FB-1
- NEMA: 4
- NEMA: 12

Note:

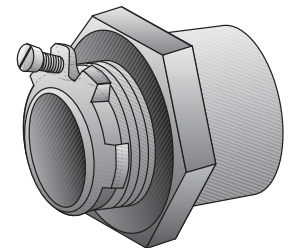
Minimum wall thickness that can be accommodated is 1/32".

Trade Size (inches)	Catalog Number	Dimensions in Inches					Max. Box Wall Thk.
		A	B	C	D Female Tapered N.P.T.		
1/2	CHM-50	7/8	1 1/2	1/2	1/2 - 14	5/16	
3/4	CHM-75	1	1 3/4	1/2	3/4 - 14	3/8	
1	CHM-100	1 1/8	2	5/8	1 - 11 1/2	7/16	
1 1/4	CHM-125	1 1/4	2 3/8	5/8	1 1/4 - 11 1/2	19/32	
1 1/2	CHM-150	1 1/4	2 3/4	5/8	1 1/2 - 11 1/2	19/32	
2	CHM-200	1 1/4	3 1/4	3/4	2 - 11 1/2	1/2	
2 1/2	CHM-250	1 5/8	3 3/8	1	2 1/2 - 8	9/16	
3	CHM-300	1 3/4	4 5/8	1	3 - 8	5/8	
3 1/2	CHM-350	1 7/8	5 1/8	1 1/8	3 1/2 - 8	5/8	
4	CHM-400	1 7/8	5 5/8	1 1/8	4 - 8	11/16	
5	CHM-500	2 1/8	6 7/8	1 1/4	5 - 8	11/16	
6	CHM-600	2 1/8	8 7/8	1 1/4	6 - 8	11/16	



Type CHM

Trade Size (inches)	Insulated Throat Catalog Number	Dimensions in Inches					Max. Box Wall Thk.
		A	B	C	D Female Tapered N.P.T.		
1/2	CHM-50T	7/8	1 1/2	1/2	1/2 - 14	7/32	
3/4	CHM-75T	1	1 3/4	1/2	3/4 - 14	9/32	
1	CHM-100T	1 1/8	2	5/8	1 - 11 1/2	11/32	
1 1/4	CHM-125T	1 1/4	2 3/8	5/8	1 1/4 - 11 1/2	19/32	
1 1/2	CHM-150T	1 1/4	2 3/4	5/8	1 1/2 - 11 1/2	19/32	
2	CHM-200T	1 1/4	3 1/4	3/4	2 - 11 1/2	1/2	
2 1/2	CHM-250T	1 5/8	3 3/8	1	2 1/2 - 8	21/32	
3	CHM-300T	1 3/4	4 5/8	1	3 - 8	11/16	
3 1/2	CHM-350T	1 7/8	5 1/8	1 1/8	3 1/2 - 8	3/4	
4	CHM-400T	1 7/8	5 5/8	1 1/8	4 - 8	19/16	
5	CHM-500T	2 1/8	6 7/8	1 1/4	5 - 8	19/16	
6	CHM-600T	2 1/8	8 7/8	1 1/4	6 - 8	19/16	



Type CHM-T

