



A

B

C

D

E

F

G

Overview

Contact rating is 50mA/130Vdc.

Magnetic Door/ Window Contacts

B39-2



Overview

Flush and Surface Mounting

Edwards electric door openers provide the security and convenience of remote control door-lock operation. Mortise units are installed in place of the regular door strike plate. Until the opener is actuated electrically by means of a remote contact device, the door remains locked securely.

Standard Features

- Easy to install
- Rugged, heavy-duty construction
- Fits either right or left hand doors
- Dependable, long service life
- Low voltage

Mortise Type

Nos. 9, 154-AD, 177 Series are mortise type, flush mounting, all provide fast and simple installation.

No. 154 provides smooth operation and will withstand 35 lb. nosing pressure, 177 are ideal for narrow door stiles. Nos. 181 are used with cylindrical (bored) type locksets and conform to ANSI specifications for steel door frames.

Applications

Apartments, offices, banks, industrial buildings, schools, and institutions. For door control systems with time or manual operation, door interlocking, etc.

Mortise and Rim Type Door Latches

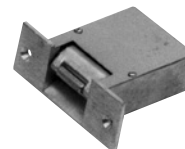
9, 177
Mortise Type



181
Mortise Type



154
Mortise Type



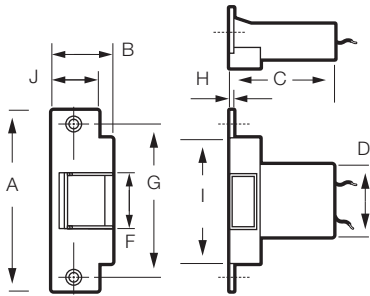
continues...



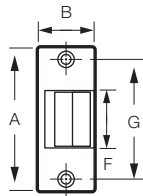
...continued

Installation and Mounting

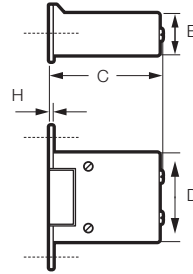
Note: For dimensions, please refer to Ordering Information chart below



181-AF
Mortise Type



154-AD, 9, 177
Mortise Type



Ordering Information

Cat. No.	Description	Volts	Amps	Suggested Transformer	Dimensions inches (mm)									
					A	B	C	D	E	F	G	H	I	J
9	Mortise Painted aluminum faceplate & nosing	4-6Vdc	1.3-2.7	--	5-7/8 (149)	1-1/4 (32)	1-9/16 (40)	3-5/8 (92)	15/16 (24)	1-3/8 (35)	5-3/8 (137)	1/8 (3)	--	--
		8-12VAC	1.3-2.7	592										
154-AD	Mortise Painted brass faceplate & nosing	4-6Vdc	1.3-2.7	--	3-1/2 (89)	1-3/8 (35)	2-3/4 (70)	1-13/16 (46)	15/16 (24)	1-1/2 (38)	3 (76)	3/32 (2)	--	--
154-G1		12-16VAC												
154-G5		24Vdc	.19	--										
		24VAC	1.4	599										
177-G5	Mortise Painted brass, faceplate, chrome nosing.	24VAC	1.4	599	5-7/8 (149)	1-1/4 (32)	1-9/16 (40)	3-5/8 (92)	15/16 (24)	1-3/8 (35)	5-3/8 (137)	1/8 (3)	--	--
181-AF	Mortise Satin chrome faceplate, chrome nosing	3-6Vdc	1.3-2.7	--	4-7/8 (124)	1-5/8 (41)	2-7/8 (73)	1-7/8 (48)	15/16 (24)	1-1/2 (38)	4-1/8 (105)	3/32 (2)	3-11/32 (85)	1-1/4 (32)
		8-16VAC	1.3-2.7	596										