

Weatherproof Boxes & Covers

Weatherproof Round Boxes & Weatherproof Kits

Pass & Seymour



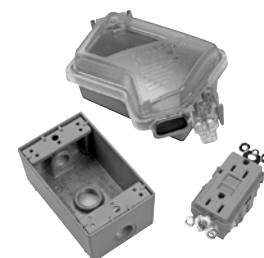
Features – 4" Round Die-Cast Aluminum Boxes

- Baked-on electrostatic, polyester, powder paint for superior scratch and corrosion resistance.
- 4 closure plugs and mounting lugs furnished with all boxes.
- UL Listed for wet and/or damp locations with appropriate cover.
- Designed for both interior and exterior applications.
- Heavy die-cast aluminum.



WPRB25

Catalog Number	Description	Color	3rd Party Compliance	
			UL	CS
4" Round Die-Cast Aluminum Boxes				
WPRB25 WPRB25BR WPRB25W	Round Cast Box – 5 Hole 1/2", 16.1 Cu. In., 4 Plugs Furnished	Gray Bronze White	•	•
WPRB35 WPRB35BR WPRB35W	Round Cast Box – 5 Hole 3/4" 16.1 Cu. In., 4 Plugs Furnished	Gray Bronze White	•	•



WPWIUKIT-C

Features

- Easy-to-install, self-contained kits include everything needed for installation – gaskets, plugs, and hardware.
- Clam-shell packaging designed for hanging displays.

Catalog Number	Color	Description	Components	3rd Party Compliance
				UL US
Weatherproof Kits				
WPWIUKITC	Clear	Weatherproof While-in-Use Safety Outlet (GFCI) Kit includes GFCI, box, and While-In-Use cover	1595-GRY, WPB23, WIUC10-CL	•
WPWIUKITW	White		1595-W, WPB23-W, WIUC10-WL	•
WPWIUKITSC	Clear	Weatherproof Shallow While-in-Use Safety Outlet (GFCI) Kit includes GFCI, box, and shallow While-In-Use cover	1595-GRY, WPB23, WIUC10-SC	•
WPWIUKITSW	White		1595-W, WPB23-W, WIUC10-SW	•
WPGFIKIT	Gray	Weatherproof Safety Outlet (GFCI) Kit includes GFCI, box, and cover	1595-GRY, WPB23, CA26-GH	•
WPGFIKITBR	Bronze		1595, WPB23-BR, CA26-BRH	•
WPGFIKITW	White		1595-W, WPB23-W, CA26-WH	•
WPOUTKIT	Gray	Weatherproof Outlet Kit includes outlet, box, and cover	3232-I, WPB23, CA8-GH	•
WPOUTKITBR	Bronze		3232-I, WPB23-BR, CA8-BRH	•
WPOUTKITW	White		3232W, WPB23-W, CA8-WH	•
WPFLDKIT	Gray	Weatherproof Dual Floodlight Kit includes box, cover, and lampholders	WPRB25, (2) PAR1, WPRB12	•
WPFLDKITBR	Bronze		WPRB25-BR, (2) PAR1-BR, WPRB12-BR	•
WPFLDKITW	White		WPRB25-W, (2) PAR1-W, WPRB12-W	•



WPGFIKIT



WPOUTKIT



WPFLDKIT