

QUICK RELEASE CLAMPS



Constructed from Stainless Steel materials for corrosion resistance. These clamps feature a unique quick release design that allows for quick and easy installation in restricted or difficult areas. 5/16 Slotted Hexagon Head and 9/16 wide band.

APPLICATIONS:

For applications where clamp must be opened to be applied. Used extensively in the telecommunications industry on cable enclosures where open air applications demand durability.

PACKAGING: 10 Piece Carton.

PART No.	Range (IN.)	Range (MM)
LAS-36	1.00 - 2.39	25 - 70
LAS-48	1.50 - 3.50	38 - 89
LAS-56	1.00 - 4.00	25 - 101
LAS-72	2.00 - 5.00	51 - 127
LAS-88	2.06 - 6.00	52 - 152
LAS-96	3.50 - 6.56	89 - 166
LAS-104	1.75 - 7.00	44 - 178
LAS-128	1.75 - 8.56	44 - 218
LAS-152	2.00 - 10.00	51 - 254
LAS-188	2.06 - 12.31	52 - 313
LAS-216	10.19 - 14.00	259 - 356
LAS-248	1.75 - 16.00	44 - 406
LAS-280	14.25 - 18.00	362 - 457
LAS-312	1.88 - 20.00	48 - 508

ONE EAR CLAMPS

(With Mechanical Interlock)



Select Nominal Clamp Size nearest to but larger than O.D. on which clamp is to be used.

APPLICATIONS:

1-Ear clamps are intended for low pressure applications such as automotive (not fuel lines), appliances, industrial machinery, underground irrigation systems and beverage dispensing equipment.

SPECIFICATIONS:

The standard HC8 series is manufactured from 1008 carbon steel tube and then zinc plated. Stainless Steel clamps are manufactured from type 304 AISI stainless.

PACKAGING: 25 Piece Bags.

Steel PART No.	Range (IN.)	Range (MM)	Stainless Steel PART No.
HC8-6	.350 - .414	8.9 - 10.5	HC8-6SS
HC8-7	.381 - .444	9.7 - 11.3	HC8-7SS
HC8-8	.453 - .524	11.4 - 13.3	HC8-8SS
HC8-9	.496 - .571	12.6 - 14.5	HC8-9SS
HC8-10	.543 - .618	13.8 - 15.7	HC8-10SS
HC8-11	.549 - .669	15.1 - 17.0	HC8-11SS
HC8-12	.669 - .779	17.0 - 19.8	HC8-12SS
HC8-13	.716 - .827	18.2 - 21.0	HC8-13SS
HC8-14	.779 - .890	19.8 - 22.6	HC8-14SS
HC8-15	.839 - .949	21.3 - 24.1	HC8-15SS
HC8-16	.896 - 1.008	22.8 - 25.6	HC8-16SS
HC8-17	.945 - 1.067	24.0 - 27.1	HC8-17SS
HC8-18	1.004 - 1.126	25.5 - 28.6	HC8-18SS
HC8-19	1.063 - 1.185	27.0 - 30.1	HC8-19SS
HC8-20	1.122 - 1.244	28.5 - 31.6	HC8-20SS
HC8-21	1.181 - 1.303	30.0 - 33.1	HC8-21SS
HC8-22	1.299 - 1.421	33.0 - 36.1	HC8-22SS
HC8-23	1.358 - 1.480	34.5 - 37.6	HC8-23SS
HC8-24	1.378 - 1.500	35.0 - 38.1	HC8-24SS
HC8-25	1.437 - 1.559	36.5 - 39.6	HC8-25SS
HC8-26	1.492 - 1.614	37.9 - 41.0	HC8-26SS
HC8-27	1.610 - 1.732	40.9 - 44.0	HC8-27SS
HC8-28	1.669 - 1.791	42.4 - 45.4	HC8-28SS
HC8-29	1.728 - 1.850	43.9 - 47.0	HC8-29SS
HC8-30	1.787 - 1.909	45.4 - 48.5	HC8-30SS
HC8-31	1.846 - 1.968	46.9 - 50.0	HC8-31SS
HC8-32	1.905 - 2.028	48.4 - 51.5	HC8-32SS
HC8-33	1.965 - 2.087	49.9 - 53.0	HC8-33SS
HC8-34	2.024 - 2.146	51.4 - 54.5	HC8-34SS
HC8-35	2.083 - 2.205	52.9 - 56.0	HC8-35SS
HC8-36	2.142 - 2.264	54.4 - 57.5	HC8-36SS
HC8-37	2.201 - 2.323	55.9 - 59.0	HC8-37SS
HC8-38	2.260 - 2.382	57.4 - 60.5	HC8-38SS
HC8-39	2.319 - 2.441	58.9 - 62.0	HC8-39SS
HC8-40	2.378 - 2.500	60.4 - 63.5	HC8-40SS
HC8-42	2.496 - 2.618	63.4 - 66.5	HC8-42SS
HC8-44	2.673 - 2.795	67.9 - 71.0	HC8-44SS
HC8-46	2.791 - 2.913	70.9 - 74.0	HC8-46SS
HC8-48	2.909 - 3.031	73.9 - 77.0	HC8-48SS

ONE EAR CLAMPS



APPLICATIONS:

One Ear Clamps are commonly used where a low profile protrusion and a small, snug clamping range is of the essence.

They are well suited for Original Equipment Manufacturer (OEM) or Maintenance, Repair and Overhaul (MRO). EPDM rubber hose, plastic tube, electrical cable, strain relief, insert molding, welding and heavily vibrating equipment hoses are readily clamped.

SPECIFICATIONS:

Type 304 AISI stainless steel.

PACKAGING: 25 Piece Bags.

PART No.	Range (IN.)	Range (MM)
HC14-4-1/2	.240 - .276	6.1 - 7.0
HC14-6	.311 - .374	7.9 - 9.5
HC14-8-1/2	.476 - .551	12.1 - 14.0
HC14-11	.602 - .689	15.3 - 17.5

FUEL INJECTION HOSE CLAMPS



PART No.	Nominal Clamp Size (IN.)
HC21-4	1/4
HC21-5	5/16
HC21-6	3/8

E

TWO EAR CLAMPS



For Pincer
tools see
page: 274

GREAT HOLDING POWER: Closing the ears builds strength into the clamp which works against the pressure in the hose.

APPLICATIONS: Two Ear Clamps are ideally suited for maintenance and O.E.M. applications, rubber hose, plastic tube, plastic pipe, and coaxial cable are all readily clamped. Uses on air, fluid, gas and steam lines are unlimited.

SPECIFICATIONS: The standard HC9 series is manufactured from 1008 steel tube. They are then zinc plated. Stainless Steel clamps are manufactured from type 304 AISI tube.

PACKAGING: 25 Piece Bags.

Select Nominal Clamp Size nearest to but larger than O.D. on which clamp is to be used.

Steel PART No.	Range (IN.)	Range (MM)	Stainless Steel PART No.
HC9-2	.122 - .161	3.1 - 4.1	—
HC9-2-1/2	.122 - .161	3.1 - 4.1	—
HC9-2-3/4	.138 - .177	3.5 - 4.5	HC9-2-3/4SS
HC9-3	.118 - .197	3.0 - 5.0	HC9-3SS
HC9-4	.197 - .276	5.0 - 7.0	HC9-4SS
HC9-5	.276 - .354	7.0 - 9.0	HC9-5SS
HC9-6	.315 - .433	8.0 - 11.0	HC9-6SS
HC9-8	.433 - .512	11.0 - 13.0	HC9-8SS
HC9-9	.512 - .591	13.0 - 15.0	HC9-9SS
HC9-9-1/2	.544 - .669	15.0 - 17.0	HC9-9-1/2SS
HC9-10	.591 - .708	15.0 - 18.0	HC9-10SS
HC9-12	.669 - .787	17.0 - 20.0	HC9-12SS
HC9-13	.748 - .866	19.0 - 22.0	HC9-13SS
HC9-14	.787 - .905	20.0 - 23.0	HC9-14SS
HC9-15	.866 - .984	22.0 - 25.0	HC9-15SS
HC9-16	.905 - 1.063	23.0 - 27.0	HC9-16SS
HC9-17	.984 - 1.102	25.0 - 28.0	HC9-17SS
HC9-18	1.063 - 1.220	27.0 - 31.0	HC9-18SS
HC9-21	1.220 - 1.339	31.0 - 34.0	HC9-21SS
HC9-23	1.339 - 1.457	34.0 - 37.0	HC9-23SS
HC9-24	1.457 - 1.575	37.0 - 40.0	HC9-24SS
HC9-26	1.575 - 1.693	40.0 - 43.0	HC9-26SS
HC9-28	1.693 - 1.811	43.0 - 46.0	HC9-28SS

TWO EAR CLAMP FIELD KIT



CONTENTS					
15	HC9-5	15	HC9-10	12	HC9-16
15	HC9-6	12	HC9-12	1	HC9-R
15	HC9-8	12	HC9-14		
15	HC9-9	12	HC9-15		

PART No. OE-SB80

- PLASTIC BOX
- OETIKER PINCERS
- 2 EAR CLAMP ASSORTMENT

STEPLESS® EAR CLAMPS



STEPLESS®:

The term "Stepless" relates to the absence of gaps or steps on the clamp's inner circumference. The unique tongue-in-groove design provides uniform compression and a 360° seal.

APPLICATIONS:

Standard Series Stepless Ear Clamps were perfected for demanding applications where lighter, thin-walled hose or tube is being used.

SPECIFICATIONS:

The standard HC10 series is manufactured from type 304 AISI stainless steel.

PACKAGING: 25 Piece Bags.

Stainless Steel PART No.	Range (IN.)	Range (MM)
HC10-6	.307 - .374	7.8 - 9.5
HC10-7	.378 - .445	9.6 - 11.3
HC10-8	.425 - .524	10.8 - 13.3
HC10-9	.472 - .571	12.0 - 14.5
HC10-10	.520 - .618	13.2 - 15.7
HC10-11-1/2	.602 - .728	15.3 - 18.5
HC10-12	.654 - .779	16.6 - 19.8
HC10-13	.701 - .827	17.8 - 21.0
HC10-14	.764 - .890	19.4 - 22.6
HC10-17	.945 - 1.067	23.9 - 27.1
HC10-18	1.004 - 1.126	25.4 - 28.6
HC10-19	1.063 - 1.185	26.9 - 30.1
HC10-21	1.181 - 1.303	29.9 - 33.1
HC10-22	1.240 - 1.362	31.4 - 34.6
HC10-24	1.358 - 1.480	34.4 - 37.6
HC10-25	1.378 - 1.500	34.9 - 38.1
HC10-26	1.437 - 1.559	36.4 - 39.6
HC10-27	1.551 - 1.673	39.3 - 42.5
HC10-27-1/2	1.610 - 1.732	40.8 - 44.0
HC10-28	1.669 - 1.791	42.3 - 45.5
HC10-29	1.728 - 1.850	43.8 - 47.0
HC10-30	1.787 - 1.909	45.3 - 48.5
HC10-32	1.905 - 2.028	48.3 - 51.5
HC10-33	1.965 - 2.087	49.8 - 53.0
HC10-34	2.024 - 2.146	51.3 - 54.5
HC10-35	2.083 - 2.205	52.8 - 56.0
HC10-36	2.142 - 2.264	54.3 - 57.5
HC10-37	2.201 - 2.323	55.8 - 59.0
HC10-38	2.260 - 2.382	57.3 - 60.5
HC10-40	2.378 - 2.500	60.3 - 63.5
HC10-41	2.437 - 2.559	61.8 - 65.0
HC10-43	2.555 - 2.667	64.8 - 68.0
HC10-44	2.673 - 2.795	67.8 - 71.0
HC10-45	2.732 - 2.854	69.3 - 72.5
HC10-46	2.791 - 2.913	70.8 - 74.0
HC10-47	2.850 - 2.972	72.3 - 75.5
HC10-48	2.909 - 3.031	73.8 - 77.0
HC10-49	2.968 - 3.090	75.3 - 78.5
HC10-50	3.028 - 3.150	76.8 - 80.0
HC10-52	3.146 - 3.268	79.8 - 83.0
HC10-53	3.205 - 3.327	81.3 - 84.5
HC10-55	3.323 - 3.445	84.3 - 87.5
HC10-57	3.441 - 3.563	87.3 - 90.5
HC10-58	3.500 - 3.622	88.8 - 92.0
HC10-59	3.559 - 3.681	90.3 - 93.5
HC10-60	3.618 - 3.740	91.8 - 95.0
HC10-61	3.677 - 3.799	93.3 - 96.5
HC10-61-1/2	3.736 - 3.858	94.8 - 98.0
HC10-63	3.850 - 3.976	97.8 - 101.0
HC10-64	3.909 - 4.027	99.3 - 102.5
HC10-65-1/2	3.968 - 4.094	100.8 - 104.0
HC10-66	4.027 - 4.153	102.3 - 105.3
HC10-67	4.086 - 4.212	103.8 - 107.0
HC10-74	4.500 - 4.625	114.3 - 117.5

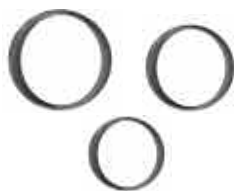
OETIKER	PART No.	OETIKER	PART No.	OETIKER	PART No.	OETIKER	PART No.
10100000	HC9-2	10500048	HC8-46	16700061	HC10-33	18500056	OE-SB80
10100000	HC9-2-1/2	10500050	HC8-48	16700062	HC10-34	20500026	QD-SCINDMC6-6F
10100001	HC9-2-3/4	10500055	HC8-53	16700063	HC10-35	20500030	QD-SCINDMC6-6M
10100002	HC9-3	10500059	HC8-57	16700064	HC10-36	20500052	QD-SCINDMC6-4F
10100004	HC9-4	10500061	HC8-59	16700065	HC10-37	20500110	QD-SCINDMC8-8F
10100008	HC9-5	14100037	HC9-P	16700066	HC10-38	20500113	QD-SCINDMC8-8M
10100011	HC9-6	14100083	HC9-S	16700068	HC10-40	20500214	QD-SCINDMC6-4M
10100016	HC9-8	14100118	HC9-R	16700069	HC10-41	20500234	QD-SCCEJNC4-4F
10100019	HC9-9	15100001	HC9-2-3/4SS	16700071	HC10-43	20500240	QD-SCCEJNC4-4M
10100022	HC9-9-1/2	15100002	HC9-3SS	16700073	HC10-44	20500291	QD-SCAROMC4-4F
10100024	HC9-10	15100003	HC9-4SS	16700074	HC10-45	20500292	QD-SCAROMC4-6F
10100027	HC9-12	15100004	HC9-5SS	16700075	HC10-46	20500297	QD-SCAROMC4-4M
10100029	HC9-13	15100006	HC9-8SS	16700076	HC10-47	20500298	QD-SCAROMC4-6M
10100030	HC9-14	15100007	HC9-9SS	16700077	HC10-48	20500311	QD-SCINDMC4-4F
10100032	HC9-15	15100008	HC9-9-1/2SS	16700078	HC10-49	20500312	QD-SCINDMC4-6F
10100034	HC9-16	15100009	HC9-10SS	16700079	HC10-50	20500317	QD-SCINDMC4-4M
10100035	HC9-17	15100010	HC9-12SS	16700081	HC10-52	20500318	QD-SCINDMC4-6M
10100037	HC9-18	15100011	HC9-13SS	16700082	HC10-53	20500349	QD-SCCEJNC6-6F
10100039	HC9-19	15100012	HC9-14SS	16700084	HC10-55	20500354	QD-SCCEJNC6-6M
10100041	HC9-21	15100014	HC9-16SS	16700086	HC10-57	20500395	QD-SCAROMC4-4H
10100043	HC9-23	15100015	HC9-17SS	16700087	HC10-58	20500397	QD-SCAROMC4-6H
10100045	HC9-24	15100016	HC9-18SS	16700088	HC10-59	20500399	QD-SCINDMC4-4H
10100047	HC9-26	15100017	HC9-19SS	16700089	HC10-60	20500401	QD-SCINDMC4-6H
10100049	HC9-28	15100018	HC9-21SS	16700090	HC10-61	20500404	QD-SCCEJNC6-6H
10300008	HC14-4-1/2	15100019	HC9-23SS	16700091	HC10-61-1/2	20500406	QD-SCCEJNC4-4H
10300026	HC14-8-1/2	15100020	HC9-24SS	16700093	HC10-63	20500408	QD-SCCEJNC4-6H
10300061	HC14-6	15100021	HC9-26SS	16700094	HC10-64	20500417	QD-SCINDMC6-6H
10300073	HC14-11	15100022	HC9-28SS	16700095	HC10-65-1/2	25500177	QD-SCCEJNN6-6M
10500000	HC8-6	15100023	HC9-6SS	16700096	HC10-66	25500178	QD-SCCEJNN6-6F
10500001	HC8-7	15100013	HC9-15SS	16700097	HC10-67	25500247	QD-SCCEJNN4-4H
10500003	HC8-8	15500001	HC8-7SS	16700104	HC10-74	25500247	QD-SCCEJNN6-6H
10500007	HC8-9	15500003	HC8-8SS	16700216	HC11-22	25500257	QD-SCCEJNN4-6H
10500008	HC8-10	15500007	HC8-9SS	16700233	HC11-33	25500275	QD-SCCEJNN4-4F
10500009	HC8-11	15500008	HC8-10SS	16700241	HC11-41	25500276	QD-SCCEJNN4-4M
10500011	HC8-12	15500009	HC8-11SS	16700242	HC11-42	25500007	QD-ARON4-4F
10500012	HC8-13	15500010	HC8-11-1/2SS	16700251	HC11-50	25500240	QD-ARON4-4H
10500013	HC8-14	15500011	HC8-12SS	16700986	HC10-6	25500003	QD-ARON4-4M
10500014	HC8-15	15500012	HC8-13SS	16700989	HC10-7	25500068	QD-ARON4-6F
10500015	HC8-16	15500013	HC8-14SS	16700993	HC10-8	25500066	QD-ARON4-6M
10500016	HC8-17	15500014	HC8-15SS	16700999	HC10-9	25500018	QD-INDMN4-4F
10500017	HC8-18	15500015	HC8-16SS	16701005	HC10-10	25500243	QD-INDMN4-4H
10500018	HC8-19	15500016	HC8-17SS	16701015	HC10-11-1/2	25500014	QD-INDMN4-4M
10500019	HC8-20	15500017	HC8-18SS	16702062	HC10-19	25500274	QD-INDMN4-6F
10500020	HC8-21	15500018	HC8-19SS	17800131	HC13-41	25500245	QD-INDMN4-6H
10500022	HC8-22	15500019	HC8-20SS	17800132	HC13-44	25500069	QD-INDMN4-6M
10500023	HC8-23	15500020	HC8-21SS	17800133	HC13-48	25500046	QD-INDMN6-4F
10500024	HC8-24	15500024	HC8-24SS	17800135	HC13-53	25500236	QD-INDMN6-4M
10500025	HC8-25	15500033	HC8-32SS	17800139	HC13-66	25500049	QD-INDMN6-6F
10500026	HC8-26	15500034	HC8-33SS	17800140	HC13-69	25500253	QD-INDMN6-6H
10500028	HC8-27	16700022	HC10-12	17800174	HC12-20	25500044	QD-INDMN6-6M
10500029	HC8-28	16700024	HC10-13	17800175	HC12-23	25500050	QD-INDMN6-8F
10500030	HC8-29	16700026	HC10-14	17800176	HC12-25	25500254	QD-INDMN6-8H
10500031	HC8-30	16700033	HC10-17	17800177	HC12-28	25500045	QD-INDMN6-8M
10500032	HC8-31	16700035	HC10-18	17800178	HC12-32	25500277	QD-INDMN8-6M
10500033	HC8-32	16700042	HC10-21	17800179	HC12-34	25500280	QD-INDMN8-8F
10500034	HC8-33	16700044	HC10-22	17800180	HC12-38	25500266	QD-INDMN8-8H
10500035	HC8-34	16700048	HC10-24	17800181	HC12-41	25500278	QD-INDMN8-8M
10500036	HC8-35	16700050	HC10-25	17800182	HC12-44		
10500037	HC8-36	16700052	HC10-26	17800183	HC12-48		
10500038	HC8-37	16700054	HC10-27	17800184	HC12-50		
10500039	HC8-38	16700055	HC10-27-1/2	17800185	HC12-53		
10500040	HC8-39	16700056	HC10-28	17800186	HC12-56		
10500041	HC8-40	16700057	HC10-29	17800187	HC12-60		
10500043	HC8-42	16700058	HC10-30	17800188	HC12-63		
10500046	HC8-44	16700060	HC10-32	17800189	HC12-66		

PEX CLAMPS & CRIMP RINGS



ASTM F2098
STAINLESS
STEEL
STEPLESS
CLAMPS

PART No.	Pex
HCPEX-8	3/8
HCPEX-10	1/2
HCPEX-12	5/8
HCPEX-14	3/4
HCPEX-18	1



BLACK
COPPER
CRIMP
RING

PART No.	Pex
HCPEX-8-BCR	3/8
HCPEX-10-BCR	1/2
HCPEX-14-BCR	3/4
HCPEX-18-BCR	1

PEX TUBE SUPPORTS



BEND
SUPPORT

PART No.	Pex
PEX BS-10	1/2
PEX BS-14	3/4



J-CLAMP
(WITH NAIL)

PART No.	Pex
PEX-JC-10	1/2
PEX-JC-14	3/4
PEX-JC-18	1

AIR BRAKE HOSE SPACERS



PART No.	Hose I.D. (IN.)
HAB-HANGER-6	3/8
HAB-HANGER-8	1/2

STEEL REINFORCED
AIR BRAKE HOSE SUPPORTS

PART No.	Hose I.D. (IN.)
HAB-HCE-6	3/8
HAB-HCE-8	1/2

HOSE SUPPORT SPRING



PART No.	Length (IN.)
HAB-SPRING-13	13
HAB-SPRING-16.4	16.4
HAB-SPRING-25	25



PART No.	Size
HAB-HC2E-6	3/8 Hose I.D.
HAB-HC2E-8	1/2 Tube O.D.

TIE STRAPS



MATERIAL: NYLON

NOTE: Black cable ties and other lengths available on request.

PART No.	Max Bundle Dia.	Tie Width	Tie Length	Min. Tensile Strength
TIE-50-7-1/2	1.88"	.190	7.5"	50 lbs.
TIE-40-11-1/2	3.00"	.140	11.5"	40 lbs.
TIE-50-14-1/2	4.00"	.190	14.5"	50 lbs.

"U" HOSE SUPPORT

Used in conjunction with hose
support spring.



PART No.	Size
HAB-HCU-6	3/8 Hose I.D.
HAB-HCU-8	1/2 Tube O.D.



**RUBBER
CUSHIONED
WRAP AROUND
TUBE STRAPS
(1/4 INCH HOLE)**

Steel – Zinc Plated

PART No.	Tube O.D.	Band Width
TS17R-4	1/4	1/2
TS17R-5	5/16	1/2
TS17R-6	3/8	1/2
TS17R-8	1/2	1/2
TS17R-10	5/8	1/2
TS17R-12	3/4	1/2
TS17R-14	7/8	1/2
TS17R-16	1	1/2
TS17R-18	1-1/8	1/2
TS17R-20	1-1/4	1/2
TS17R-24	1-1/2	1/2
TS17R-32	2	1/2
TS17R-38	2-3/8	1/2
TS17R-40	2-1/2	1/2
TS17R-48	3	1/2
TS17R-56	3-1/2	1/2
TS17R-64	4	1/2



**RUBBER
CUSHIONED
WRAP AROUND
TUBE STRAPS
(1/4 INCH HOLE)**

Stainless Steel

PART No.	Tube O.D.	Band Width
TSS17R-4	1/4	1/2
TSS17R-6	3/8	1/2
TSS17R-8	1/2	1/2
TSS17R-10	5/8	1/2
TSS17R-12	3/4	1/2
TSS17R-16	1	1/2
TSS17R-20	1-1/4	1/2
TSS17R-24	1-1/2	1/2
TSS17R-32	2	1/2



**RUBBER
CUSHIONED
WRAP AROUND
TUBE STRAPS
(3/8 INCH HOLE)**

Steel – Zinc Plated

PART No.	Tube O.D.	Band Width
TS16R-4	1/4	5/8
TS16R-5	5/16	5/8
TS16R-6	3/8	5/8
TS16R-8	1/2	5/8
TS16R-10	5/8	5/8
TS16R-12	3/4	5/8
TS16R-14	7/8	5/8
TS16R-16	1	5/8
TS16R-18	1-1/8	5/8
TS16R-20	1-1/4	5/8
TS16R-24	1-1/2	5/8
TS16R-32	2	5/8
TS16R-38	2-3/8	5/8
TS16R-40	2-1/2	5/8



**ONE HOLE
TUBE
STRAPS**

Steel – Zinc Plated Heavy Type

PART No.	Tube O.D.	Band Width
TS20-2	1/8	1/2
TS20-3	3/16	1/2
TS20-4	1/4	1/2
TS20-5	5/16	1/2
TS20-6	3/8	5/8
TS20-8	1/2	5/8
TS20-10	5/8	3/4
TS20-12	3/4	3/4
TS20-16	1	7/8



**ONE HOLE
TUBE
STRAPS**

Everdur Copper Heavy Type

PART No.	Tube O.D.	Band Width
TS21-2	1/8	1/2
TS21-3	3/16	1/2
TS21-4	1/4	1/2
TS21-5	5/16	1/2
TS21-6	3/8	5/8
TS21-8	1/2	5/8
TS21-12	3/4	3/4
TS21-16	1	7/8



**“DUPLEX”
DOUBLE
TUBE STRAP**

Steel – Zinc Plated

PART No.	Tube O.D.	Tube O.D.
TS19-44	1/4	1/4
TS19-66	3/8	3/8
TS19-88	1/2	1/2



**TWO HOLE
STRADDLE
TUBE STRAPS**

Steel - Copper Coated

PART No.	Tube O.D.	Nominal I.D.
TS14-6	3/8	1/4
TS14-8	1/2	3/8
TS14-10	5/8	1/2
TS14-14	7/8	3/4



**TWO HOLE
STRADDLE
TUBE STRAPS
Solid Copper**

PART No.	Tube O.D.	Nominal I.D.
TS15-6	3/8	1/4
TS15-8	1/2	3/8



J-CLIPS Steel - Copper Coated

PART No.	For Tube O.D.
TS18-8	3/8 or 1/2
TS18-10	5/8



**HANGER STRAP Steel - Copper
Coated 3/4" Wide x 1/32" Thick**

PART No.	Length (FT.)
HS11-25	25
HS11-50	50
HS11-100	100

E

PIPE STAY - STANDARD

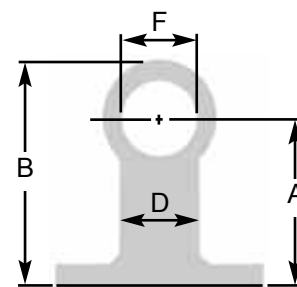
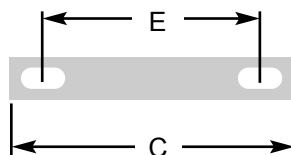
Size Range: 1/2" - 2" Copper / 3/8" - 2" Iron Pipe
Material: Carbon Steel
Finish: Black Epoxy Coated
Service: Vertical or Horizontal Offset Pipe Guide



PART No. PS



PART No. PSL



PART No.	Copper/Pipe Size	SPECIFICATION DATA					
		A	B	C	D	E	F
PS-8C	1/2" Copper / 3/8" Iron Pipe	1-1/8	1-13/16	2-1/2	1	1-3/4	11/16
PSL-8C		2-1/2	3-1/8				29/32
PS-12D	3/4" Copper / 1/2" Iron Pipe	1-3/16	1-7/8	3-1/4	1-1/4	2	1-5/32
PSL-12D		2-1/2	3-1/4				1-13/32
PS-20H	1-1/4" Copper / 1" Iron Pipe	1-1/2	2-9/16	4	1-3/4	3	1-23/32
PSL-20H		2-11/16	3-11/16				2-3/16
PS-24J	1-1/2" Copper / 1-1/4" Iron Pipe	2-1/2	3-5/8	4	1-3/4	3	1-23/32
PS-K	1-1/2" Iron Pipe	2-5/8	4-3/16	4-1/2	2-3/16	3-1/4	1-31/32
PS-32	2" Copper	2-11/16					2-3/16
PS-M	2" Iron Pipe						2-7/16

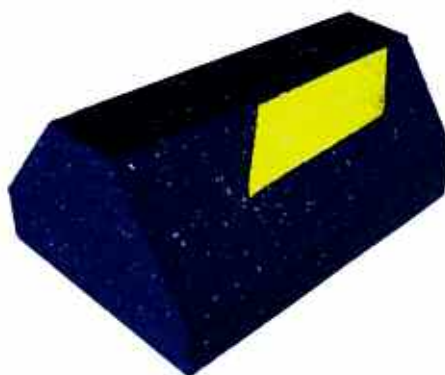
ROOFTOP PIPE SUPPORT BLOCK

Features:

- 100% Recycled Rubber
- Compatible with most rooftop materials
- Dampens vibrations.
- No need for supplemental rubber pad.
- Will Not float.
- Will Not deteriorate.
- Extensive product line for all your needs.

Applications:

Air Conditioning
 Cable tray
 Electric Conduit
 Ducts
 HVAC
 Pipes
 Roof walks...



PART No. QB-1





WHAT'S NEW IN THIS SECTION

- PEX Ball Valves
.....Pg 187

F VALVES AND SHUT-OFF COCKS

BRASS - STEEL - STAINLESS

INDEX

AIR CHUCKS	197
AIR TANK VALVES	197
ANGLE VALVES	193
BALL VALVES - COMPRESSION - BRASS	194
BALL VALVES - GAS (VAPOUR) - BRASS	187 - 188
BALL VALVES - GENERAL PURPOSE - BRASS	186
BALL VALVES - MINIATURE - BRASS	187
BALL VALVES - PEX - BRASS	187
BALL VALVES - STAINLESS STEEL	189 - 190
BALL VALVES - STEEL	189 - 190
CHECK VALVES	198 - 199
DRAIN COCKS	197
DRUM & BARREL FAUCETS	194
GATE VALVES	193
GATE VALVES - MOLASSES & OIL	194
GLADHANDS	200
LIFT TRUCK CHECK CONNECTORS	199
NEEDLE VALVES - BRASS	191 - 192
NEEDLE VALVES - GAS	192
OIL TANK VALVES	194
PRESSURE PROTECTION VALVES	199
SELECTOR VALVES	193
SHUT-OFF COCKS	195 - 196
SWING CHECK VALVES	198
WATER THREAD VALVES	194

F

FORGED BRASS BALL VALVE - FULL PORT



PIPE
Female
To
Female

PART No.	Pipe	W.O.G.	W.S.P.
BV2103-A	1/8	600	150
BV2103-B	1/4	600	150
BV2103-C	3/8	600	150
BV2103-D	1/2	600	150
BV2103-E	3/4	600	150
BV2103-H	1	600	150
BV2103-J	1-1/4	600	150
BV2103-K	1-1/2	600	150
BV2103-M	2	600	150
BV2103-N	2-1/2	400	150
BV2103-P	3	400	150

FORGED BRASS BALL VALVE - FULL PORT



PIPE
Female
To
Female

With Locking Handle

PART No.	Pipe	W.O.G.	W.S.P.
BV2103-B-LH	1/4	600	150
BV2103-C-LH	3/8	600	150
BV2103-D-LH	1/2	600	150
BV2103-E-LH	3/4	600	150
BV2103-H-LH	1	600	150
BV2103-J-LH	1-1/4	600	150
BV2103-K-LH	1-1/2	600	150
BV2103-M-LH	2	600	150

FORGED BRASS 3-WAY BALL VALVE



PIPE
Female
Ends
3 - Way

PART No.	Pipe	W.O.G.
BV2101-B	1/4	400
BV2101-C	3/8	400
BV2101-D	1/2	400
BV2101-E	3/4	400
BV2101-H	1	400
BV2101-J	1-1/4	400
BV2101-K	1-1/2	400
BV2101-M	2	400

BRASS BALL VALVE - FULL PORT



PIPE
Female
To
Female

PART No.	Pipe	W.O.G.
BV4103-B	1/4	600
BV4103-C	3/8	600
BV4103-D	1/2	600
BV4103-E	3/4	600
BV4103-H	1	600
BV4103-J	1-1/4	600
BV4103-K	1-1/2	600
BV4103-M	2	600
BV4103-N *	2-1/2	400
BV4103-P *	3	400
BV4103-S *	4	400

* Complete with Stainless Steel Handles.

BRASS BALL VALVE - FULL PORT
STAINLESS STEEL HANDLE

PIPE
Female
To
Female

PART No.	Pipe	W.O.G.
BV4103-B-SSH	1/4	600
BV4103-C-SSH	3/8	600
BV4103-D-SSH	1/2	600
BV4103-E-SSH	3/4	600
BV4103-H-SSH	1	600
BV4103-J-SSH	1-1/4	600
BV4103-K-SSH	1-1/2	600
BV4103-M-SSH	2	600

FORGED BRASS 3-WAY BALL VALVE



PIPE
Female
Ends
3 - Way

PRESSURE RATING:
Bottom Port as inlet 500 P.S.I.
Side Port as inlet 100 P.S.I.

PART No.	Pipe
BV2101T-B	1/4
BV2101T-C	3/8
BV2101T-D	1/2

BRASS BALL VALVE - FULL PORT

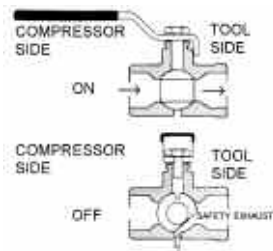


SOLDER
Female
To
Female

PART No.	Type K Size	W.O.G.
BVC4103-10	1/2	600
BVC4103-14	3/4	600
BVC4103-18	1	600
BVC4103-22	1-1/4	600
BVC4103-26	1-1/2	600
BVC4103-34	2	600

SOLDERING TEMPERATURES NOT
TO EXCEED 400 degrees F.

SAFETY EXHAUST BALL VALVE



PIPE
Female
To
Female

PART No.	Pipe
BVSE2103-B	1/4
BVSE2103-C	3/8
BVSE2103-D	1/2
BVSE2103-E	3/4

THIS VALVE IS DESIGNED TO EXHAUST
DOWNSTREAM AIR IN THE CLOSED POSITION.

SAFETY EXHAUST BALL VALVE



PIPE
Female
To
Female

With Locking Handle

PART No.	Pipe
BVSE2103-B-LH	1/4
BVSE2103-C-LH	3/8
BVSE2103-D-LH	1/2
BVSE2103-E-LH	3/4

THIS VALVE IS DESIGNED TO EXHAUST
DOWNSTREAM AIR IN THE CLOSED POSITION.

W.O.G. = WATER, OIL AND GAS W.S.P. = WORKING STEAM PRESSURE