

COMMERCIAL DOOR LOCKS AND HANDLES

Commercial key locks, 1/4 turn locks and handles



Universal padlock provisions

CATALOG # : 880 PLCHQ375
KEY NUMBER : Use 880 PDLK375
Key included? : No
Material : Stainless steel
For use with : ES series, 9412, CH series...



Weatherproof padlock 3/8"

CATALOG # : 880 PDLK375
KEY NUMBER : K-KL1
Key included? : Yes
Material : Steel/Plastic
For use with : 880 PLESQ38
 General purpose



1/4 turn polymer lock

CATALOG # : 880 SCQ1-SL
KEY NUMBER : None
Key included? : No
Material : Polyamide GF
For use with : 1100 E (with embossed covers)



Long 1/4 turn polymer lock

CATALOG # : 880 SCQ1-SLL
KEY NUMBER : None
Key included? : No
Material : Polyamide GF
For use with : 1100 E (with square covers)



1/4 turn polymer lock

CATALOG # : 880 SCQ1-SLF
KEY NUMBER : None
Key included? : No
Material : Polyamide GF
For use with : 1100, 1100 W, 1100 E (flat covers)



Key lock 'L' handle

CATALOG # : 880 SCQCOM-L
KEY NUMBER : K-KL1
Key included? : Yes
Material : Zinc Cast
For use with : 1100 CM, 1100 TC 1100 E



Padlockable with key lock

CATALOG # : 880 SCQCOM-QLP
KEY NUMBER : K-KL1
Key included? : Yes
Material : Zinc Cast
For use with : 1100 CM, 1100 TC 1100 E



'L' handle non-locking

CATALOG # : 880 SCQCOM-LN
KEY NUMBER : None
Key included? : No
Material : Polyamide GF/Zinc
For use with : 1100 CM, 1100 TC 1100 E



Padlockable with no key

CATALOG # : 880 SCQCOM-QLPN
KEY NUMBER : None
Key included? : No
Material : Zinc Cast
For use with : 1100 CM, 1100 TC 1100 E



Key lock

CATALOG # : 880 SCQCOM-K
KEY NUMBER : K-KL1
Key included? : Yes
Material : Plated steel
For use with : 1100 CM, 1100 TC 1100 E



Combination lock

CATALOG # : 880 SCQCOM-NL
KEY NUMBER : None
Key included? : No
Material : Plated steel
For use with : 1100 CM, 1100 TC 1100 E



Key lock wing handle

CATALOG # : 880 SCQCOM-WN
KEY NUMBER : K-WN
Key included? : Yes
Material : Polyamide GF/Zinc
For use with : 1100 CM, 1100 TC 1100 E



Key lock 'T' handle

CATALOG # : 880 SCQCOM-T
KEY NUMBER : K-T
Key included? : Yes
Material : Polyamide GF/Zinc
For use with : 1100 CM, 1100 TC 1100 E



Non-locking wing handle

CATALOG # : 880 SCQCOM-WNN
KEY NUMBER : None
Key included? : no
Material : Polyamide GF/Zinc
For use with : 1100 CM, 1100 TC 1100 E



Double padlock wing

CATALOG # : 880 SCQCOM-WNP
KEY NUMBER : Padlock
Key included? : No
Material : Polyamide GF/Zinc
For use with : 1100 CM, 1100 TC 1100 E

Data subject to change without notice.

Items listed above are complete units. Individual parts (inserts, cams, housings) can be ordered. See page 453.

FLANGE-MOUNTED LOCKS

Door locks for ESCH series enclosures (1/4 turn lock)

The **880 SCQ2 series** door lock accessories are designed to fit ESCH series enclosures. A full range of accessories are available to accommodate a variety of applications.

These accessories include :
 - Slot lock in zinc casting and stainless steel.
 - Padlock provision in zinc casting and stainless steel.
 - 3 insert types, key lock, knob

A new mounting clip facilitates the installation and removal of the flange mounted 1/4 turn locks. This innovative lock design was engineered by EXM and is used only on EXM products.



Slot lock

CATALOG # : 880 SCQ2S
KEY NUMBER : None
Key included? : N/A
Material : Zinc casting
For use with : ESCH series, 1500 CS, 880 HWK



Stainless steel slot lock

CATALOG # : 880 SCQ3S
KEY NUMBER : None
Key included? : N/A
Material : Stainless steel
For use with : ESSCH series, EALCH series...



Padlock

Zinc cast # : 880 SCQ2P
For use with : ESCH series, 1500 CS, 880 HWK
Stainless steel # : 880 SCQ3P
For use with : ESSCH series, EALCH series...



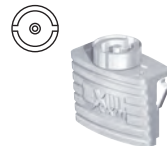
Wing knob

CATALOG # : 880 SCQ2WN
KEY NUMBER : None
Key included? : No tool required
Material : Zinc casting
For use with : ESCH series, 1500 CS, 880 HWK



Key lock

CATALOG # : 880 SCQ2K
KEY NUMBER : K-ESCHK
Key included? : Yes
Material : Zinc casting
For use with : ESCH series, 1500 CS, 880 HWK



Double bit lock

CATALOG # : 880 SCQ2DB
KEY NUMBER : K-DB3
Key included? : No
Material : Zinc casting
For use with : ESCH series, 1500 CS, 880 HWK



Triangular lock

CATALOG # : 880 SCQ2TR
KEY NUMBER : K-TR7
Key included? : No
Material : Zinc casting
For use with : ESCH series, 1500 CS, 880 HWK



Square lock

CATALOG # : 880 SCQ2SQ
KEY NUMBER : K-SQ6
Key included? : No
Material : Zinc casting
For use with : ESCH series, 1500 CS, 880 HWK

Door locks for ESEL series enclosures (Screw type)

The **880 SCQ2ELS series** door lock accessories are designed to fit ESEL series enclosures. A full range of accessories are available to accommodate a variety of applications.

These accessories include :
 - Slot lock in zinc casting and stainless steel.
A new mounting clip facilitates

the installation and removal of the flange mounted screw type locks. This innovative lock design was engineered by EXM and is used only on EXM products.



Slot lock

CATALOG # : 880 SCQ2ELS
KEY NUMBER : None
Key included? : N/A
Material : Zinc casting
For use with : ESEL series, 5412 ESEL



Stainless steel slot lock

CATALOG # : 880 SCQ3ELS
KEY NUMBER : None
Key included? : N/A
Material : Stainless steel
For use with : ESEL series, 5412 ESEL

Data subject to change without notice.