

FEATURES & SPECIFICATIONS

INTENDED USE — The industry's next generation in linear direct fluorescent products. This new compact, low-profile design offers our customers unique product features which improve the overall installation process and appearance while reducing labor cost, making it the most versatile solution for commercial, retail, manufacturing, warehouse, and cove and display applications.

CONSTRUCTION — Compact designed channel and cover are formed from code-gauge cold-rolled steel. Innovative T8 two-lamp back plate offers compact design and additional socket protection. Locking lamp holder tracks bolsters strength of the overall strip construction while creating improved lamp stability. Design includes T8 socket, features rotating collar and enclosed contacts. Improved easy "snap n' lock" end plates allow for quick attachment.

Designed to accommodate a wide variety of T8 lamp lengths. Channel offers the gripper back feature which strengthens the overall construction and allows for the use of the new Z spring hanger (see back). Newly designed, patent-pending channel cover offers a secure fit design, allowing for easy access and quick attachment without pinching wires.

Finish: High-gloss, baked white enamel finish (white standard). Five-stage iron-phosphate pretreatment ensures superior paint adhesion and rust resistance. Other channel paint finish options: black (MB), smoke gray (SMG) and galvanized (GALV).

OPTICS — Reflector options include solid or apertured designs in both symmetric and asymmetric configurations. Consult factory for special-apertured versions.

ELECTRICAL — Thermally protected, resetting, Class P, HPF, non-PCB, UL listed. Suitable for damp locations. AWN, TFN or THHN wire used throughout, rated for required temperatures.

INSTALLATION — Patented-pending "three-point" row connector locks channel together for straighter and faster row mounting; included as standard. Ideal for surface-mount or suspended.

LISTINGS — UL Listed, CUL Listed or CSA Certified to Canadian Standards. Listed for 25° C ambient temperature.

WARRANTY — 1-year limited warranty. Complete warranty terms located at www.acuitybrands.com/CustomerResources/Terms_and_conditions.aspx

Actual performance may differ as a result of end-user environment and application.

Note: Specifications subject to change without notice.

Catalog Number
Notes
Type



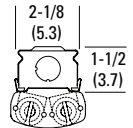
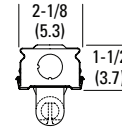
Low-Profile T5/T8 Striplight



Linear Lamps
1 or 2 Lamps

Specifications

T8 Length:	24 (61.0), 36 (91.4), 48 (121.9) 72 (182.9) or 96 (243.8)
T5 Length:	22-3/8 (56.8), 34-1/8 (86.7), 46 (116.8) 68-3/8 (173.6) or 92 (233.6)
Width:	2-1/8 (5.4)
Depth:	1-1/2 (3.8)



All dimensions are inches (centimeters) unless otherwise noted.

ORDERING INFORMATION

For shortest lead times, configure products using **standard options (shown in bold)**.

Example: Z 1 32 MVOLT GEB10S

Series	Number of lamps	Lamp type	Voltage	Ballast	Options	
Z Compact strip For tandem double-length unit, add prefix T. Example: TZ	1	17 17W T8 (24")	120	GEB10S T8 electronic ballast, ≤10% THD, instant start (T8 only)	GLR Internal fast-blow fuse (add X for external) ²	TILW Tandem in-line wiring
		25 25W T8 (36")	277		GMF Internal slow-blow fuse (add X for external) ²	CSA CSA Certified
	32 32W T8 (48")	347	PLR Plug in wiring, specify number of branch circuits and hot wires (A-black, B-Red, C-Blue, AB or AC)		NOM NOM Certified	
	Not included	MVOLT		MSI Aisle motion sensor ^{2,3}		
	14T5 14W T5 (22")			Others available	MSI360 360° motion sensor ^{2,3}	
	21T5 21W T5 (34")	21T5 21W T5 (34") 24T5HO 24W T5 HO (22") 28T5 28W T5 (46") 39T5HO 39W T5 HO (34") 54T5HO 54W T5 HO (46")		GEB10RS T8 electronic ballast, ≤10% THD, rapid start ¹	MSE360LBZ 360° motion sensor; for mounting within row or at end of row ^{2,3,4}	
	24T5HO 24W T5 HO (22")		GEB10PS Electronic ballast, ≤10% THD, programmed start		EL55 Emergency battery pack (nominal 390-700 lumens); consult factory for additional battery packs ^{2,3,4}	
	28T5 28W T5 (46")					EL65 Emergency battery pack (nominal 725-1325 lumens) ^{2,3,4}
	21T5 21W T5 (34")	39T5HO 39W T5 HO (34")	BILP High-efficiency .78 bf (low)			
	24T5HO 24W T5 HO (22")			54T5HO 54W T5 HO (46")		

Accessories: Order as separate catalog number.

		For T8 fixtures only	For T5 fixtures only
SQ_	Swivel-stem hanger (specify length in 2" increments)	Z8SMR48 Symmetric reflector, 48" white ⁵	Z5SMR46 Symmetric reflector, 46" white ⁵
ZSPRG	Tong and T-grid hanger (for 15/16" T-grid)	Z8ASR48 Asymmetric reflector, 48" white ⁵	Z5ASR46 Asymmetric reflector, 46" white ⁵
HC36	Hanger chain, 36"	Z8SMR36 Symmetric reflector, 36" white ⁵	Z5SMR34 Symmetric reflector, 34" white ⁵
ZACVH	Adjustable aircraft cable with hook	Z8ASR36 Asymmetric reflector, 36" white ⁵	Z5ASR34 Asymmetric reflector, 34" white ⁵
		Z8SMR24 Symmetric reflector, 24" white	Z5SMR22 Symmetric reflector, 22" white
		Z8ASR24 Asymmetric reflector, 24" white	Z5ASR22 Asymmetric reflector, 22" white
		WGZ48 48" wireguard, white ⁵	WGZ46 46" wireguard, white ⁵
		WGZ8SMR48 48" wireguard, white, for symmetric reflector ⁵	WGZ5SMR46 46" wireguard, white, for symmetric reflector ⁵
		WGZ8ASR48 48" wireguard, white, for asymmetric reflector ⁵	WGZ5ASR46 46" wireguard, white, for asymmetric reflector ⁵

Notes	3	Not available with CSA Certified.
1	For 347V.	4 Available with 4' and 8' lengths only.
2	Specify voltage (available 120/277V).	5 Order two for tandem double length fixtures.

Z T8 / T5 Striplight

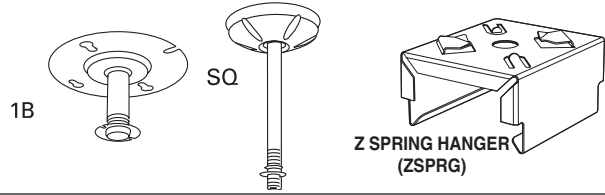
MOUNTING DATA

For unit or row installation, surface or stem mounting.

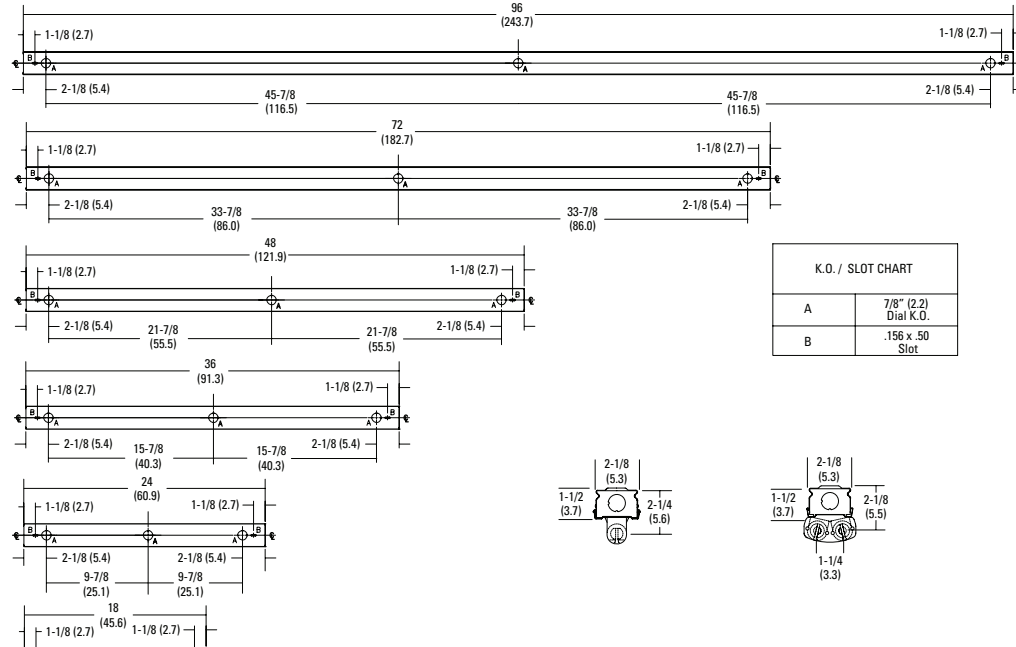
Unit installation — Minimum of two hangers required.

Row installation — One hanger per channel plus one per row required.

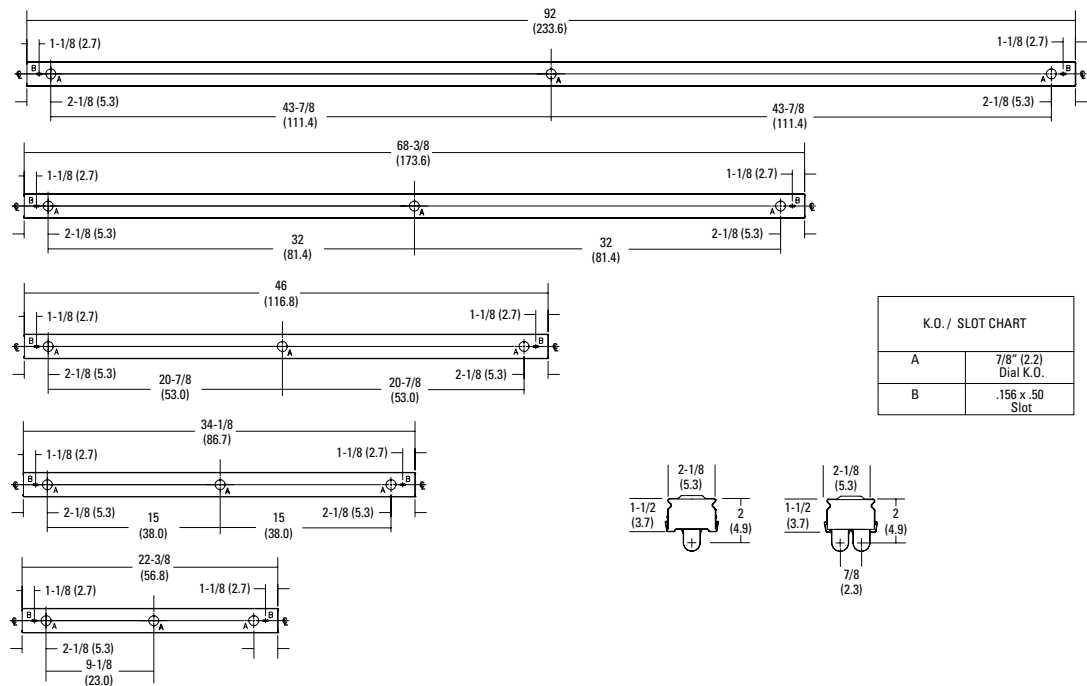
Review local codes when installing any product, as the minimum of 1 hanger per fixture may not satisfy your local building code.



T8 DIMENSIONS



T5 DIMENSIONS



PHOTOMETRICS

See www.lithonia.com.



Z-T8-T5