

Threaded products and hardware



H122 Trapnut™ strut fastener

Cat. no.	Size (in.)	Design load (lb)	Std. ctn.
H 122 1/4	1/4	150	50
H 122 3/8	3/8	590	50
H 122 1/2	1/2	1,080	50
H 122 1/4 EG	1/4	150	50
H 122 3/8 EG	3/8	590	50
H 122 1/2 EG	1/2	1,080	50
H 122 3/8 SS6	3/8	590	50
H 122 1/2 SS6	1/2	1,080	50

Finishes – Electrogalvanized (EG), GoldGalv®, stainless steel type 316 (SS6)



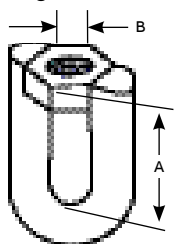
M117 Eye socket

	Rod size A (in.)	Pipe size (in.)	B (in.)	E (in.)	Wt./C lb	Design load, lb
Diagram	1/4	3/8	1/4	1 11/32	5	230
	3/8	1/2–2	1/4	1 11/32	7	610
	1/2	2 1/2–3 1/2	1/4	1 17/32	13	1,130
	5/8	4–5	3/8	1 13/16	19	1,810
	3/4	6	1/2	2 5/32	31	2,400
	7/8	8	1/2	2 11/32	44	2,800

Standard finishes – bare (B), electrogalvanized (EG)
 Malleable iron. For attaching hanger rod to various types of hangers and beam clamps.
 Order by product number, rod size, and finish. **Example: M117-1/4B**
 Complies with Specification MSS SP69, Type 16.

E120 Swivel joint

	Cat. no.	Size (in.)	A (in.)	B (in.)	Wt./C lb	Design load, lb
Diagram	E120-3/8	3/8	1 3/8	3/8	15	1,000
	E120-1/2	1/2	1 1/2	1/2	25	1,800



Threaded products and hardware



E120A Weldless eye nut

	Rod size T (in.)	A (in.)	B (in.)	C (in.)	D (in.)	E (in.)	F (in.)	Wt./C lb	Design load, lb
Diagram	$\frac{3}{8}$	$\frac{7}{8}$	$\frac{5}{8}$	$1\frac{1}{4}$	2	$2\frac{1}{2}$	$\frac{3}{8}$	20	2,700
	$\frac{1}{2}$	$\frac{7}{8}$	$\frac{5}{8}$	$1\frac{1}{4}$	2	$2\frac{1}{2}$	$\frac{3}{8}$	22	2,700
	$\frac{5}{8}$	$1\frac{3}{8}$	$\frac{3}{4}$	$1\frac{1}{2}$	$2\frac{1}{2}$	3	$\frac{1}{2}$	60	5,000
	$\frac{3}{4}$	$1\frac{3}{8}$	$\frac{3}{4}$	$1\frac{1}{2}$	$2\frac{1}{2}$	3	$\frac{1}{2}$	56	5,000
	$\frac{7}{8}$	$1\frac{1}{2}$	$1\frac{5}{8}$	$1\frac{5}{16}$	$3\frac{5}{8}$	$4\frac{1}{2}$	$\frac{3}{4}$	174	10,000
	1	$1\frac{1}{2}$	$1\frac{5}{8}$	$1\frac{5}{16}$	$3\frac{5}{8}$	$4\frac{1}{2}$	$\frac{3}{4}$	168	10,000

Standard finish – bare (B)
 Drop forged steel. For use on high temperature piping installations.
 Order by product number and rod size. **Example: E120A-3/8B**

E122 Swivel joint

	Cat. no.	Size (in.)	A (in.)	B (in.)	Wt./C lb	Design load, lb
Diagram	E122-3/8	$\frac{3}{8}$	$1\frac{3}{8}$	$\frac{3}{8}$	28	1,000
	E122-1/2	$\frac{1}{2}$	$1\frac{1}{2}$	$\frac{1}{2}$	48	1,800

E130 Swivel joint

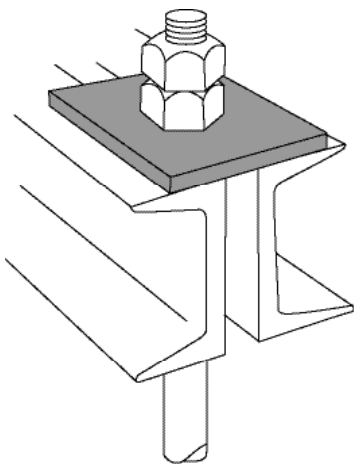
	Cat. no.	Size (in.)	A (in.)	B (in.)	Wt./C lb	Design load, lb
Diagram	E130-3/8	$\frac{3}{8}$	$1\frac{3}{8}$	$\frac{3}{8}$	23	1,000
	E130-1/2	$\frac{1}{2}$	$1\frac{1}{2}$	$\frac{1}{2}$	48	1,800

E131 Swivel joint

	Cat. no.	Size (in.)	A (in.)	B (in.)	Wt./C lb	Design load, lb
Diagram	E131-3/8	$\frac{3}{8}$	$1\frac{3}{8}$	$\frac{3}{8}$	25	1,000
	E131-1/2	$\frac{1}{2}$	$1\frac{1}{2}$	$\frac{1}{2}$	52	1,800

Threaded products and hardware

C781 Square washer Std. pack 50



Cat. no.	Rod size (in.)	Hole size (in.)	Overall dimensions (in.)	Wt./C lb
C781-3/8*	3/8	7/16	3 x 3 x 3/16	27
C781-1/2*	1/2	9/16	3 x 3 x 3/16	27
C781-5/8*	5/8	11/16	3 x 3 x 1/4	47
C781-3/4*	3/4	13/16	3 x 3 x 1/4	42
C781-7/8*	7/8	15/16	4 x 4 x 3/8	85
C781-1*	1	1 1/8	4 x 4 x 3/8	160

Used for beam applications. For channel applications, use AB241.

*Finishes

- B
- HDG
- EG
- SS6

H115 Standard U-bolt



Diagram	Pipe size (in.)	A (in.)	B (in.)	C (in.)	D (in.)	E (in.)	Wt./C lb	Design load, lb
	1/2	15/16	1 3/4	1 1/2	1/4	2 3/4	13	1,500
	3/4	1 1/8	1 3/4	1 5/8	1/4	3 1/16	15	2,000
	1	1 3/8	1 7/8	1 5/8	1/4	3 5/16	16	2,500
	1 1/4	1 23/32	1 3/4	1 15/32	3/8	3 1/2	17	2,500
	1 1/2	2	1 3/4	1 7/16	3/8	3 3/4	18	2,500
	2	2 1/16	2 1/16	1 7/8	3/8	4 11/16	32	3,300
	2 1/2	2 15/16	2 1/16	1 13/16	1/2	5 1/8	34	4,000
	3	3 3/16	2	1 3/4	1/2	5 11/16	38	4,000
	3 1/2	4 3/32	2	1 23/32	1/2	6 3/16	40	4,000
	4	4 19/32	2 1/4	1 31/32	1/2	6 15/16	46	4,000
	5	5 5/8	3	2 7/32	1/2	8 5/16	101	4,000
	6	6 3/4	3 3/4	2 13/16	5/8	10 1/8	197	4,000
8	8 3/4	3 3/4	2 13/16	5/8	12 1/8	233	4,000	
10	10 7/8	4	3	3/4	14 9/16	491	5,400	
12	12 7/8	4 1/4	3 3/4	7/8	16 15/16	773	7,500	

Standard finishes – electrogalvanized (EG), GoldGalv®, stainless steel or bare (B)

Example: H115-1/2EG

Sizes through 4 in. furnished with one hex nut per leg.

Sizes 5 in. and above furnished with two hex nuts per leg.

Order by cat. no., pipe size, finish.

Complies with Specification MSS SP69, Type 24.