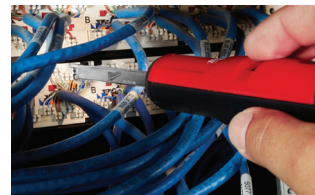


**PUNCHDOWN TOOL**

**BEST ACCESS  
& VISIBILITY**



Extended Reach Punchdown Blade

Model #	Description	Blades Included
48-22-2165	Punchdown Tool with Extended Blade	66/110 Combination and Extended Reach 110
48-22-2166	Extended Punchdown Blade	Extended Reach 110
48-22-2167	Punchdown Blade	66/110 Combination

**MINI FLUSH CUTTER**

**CONSISTENT,  
PRECISE CUTS**



Spring Assisted

Model #	Description
48-22-6105	Mini Flush Cutter

**RATCHETING MODULAR CRIMPER**

**CONSISTENT,  
ACCURATE CRIMPS**

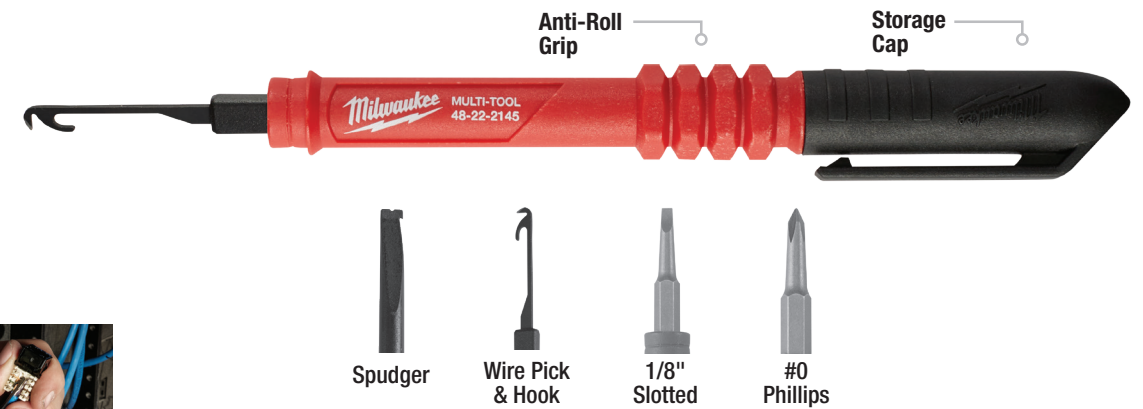


Parallel Crimping Design

Model #	Description
48-22-3075	Ratcheting Modular Crimper

**MULTI-PICK TOOL**

**4in1**



Model #	Description
48-22-2145	Multi-Pick Tool

**ELECTRICIAN SNIPS**

**BLADES WON'T LOOSEN.  
BOLT LOCK**



Wire Gullet Prevents Walking

Model #	Description
48-22-4045	Electrician Snips

**UTP STRIPPER**

**COMFORTABLE,  
ONE HAND OPERATION**



Optimized Finger Loop

Model #	Description
48-22-3065	UTP Stripper