

## Covers

.....

### Tray Covers

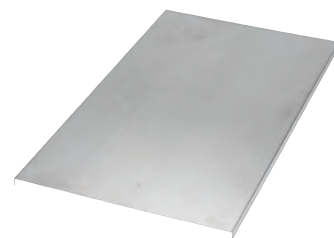
Tray covers are available for all classes of tray. They should be installed where falling objects may damage cables or where a vertical tray run is accessible by pedestrian or vehicular traffic.

Outside cable tray runs should be covered with a peaked flanged cover to protect cable from the elements and excess build up of snow and ice.

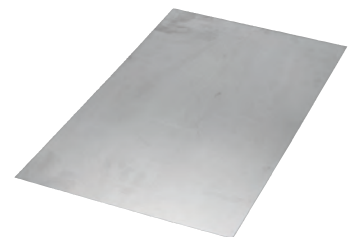
### Solid Covers

These covers provide maximum mechanical protection for cables with limited heat build up. Solid covers are available with or without flange. Flanged covers have 1/2 in. flange.

Cover mounting hardware must be ordered separately.



Solid Flanged

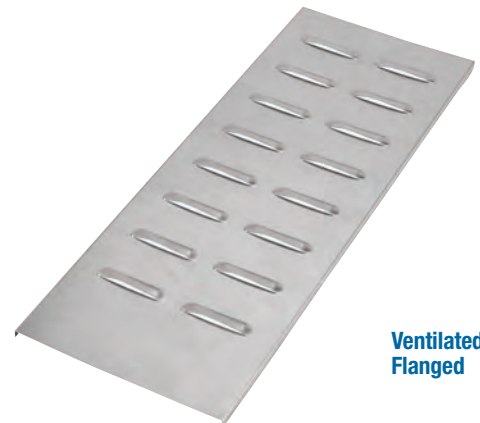


Solid Non-Flanged

### Ventilated Flanged Covers

This design offers excellent mechanical protection while allowing heat produced by cables to dissipate.

Cover mounting hardware must be ordered separately.



Ventilated Flanged

### Peaked Flanged Covers

Peaked covers offer mechanical protection plus prevent accumulation of liquid on the cover. Peaked covers have 15° rise at the peak.

Cover mounting hardware must be ordered separately.



Peaked Flanged

## Covers

### Straight Cover Number Selection

<b>(SPW 12)SNC-3</b>			
Material Prefix	Width	Type	Length
SPW • Pregalvanized SHW • Hot-dipped galvanized* SSW • Stainless steel 316	06 • (6 in.) 09 • (9 in.) 12 • (12 in.) 18 • (18 in.) 24 • (24 in.) 30 • (30 in.) 36 • (36 in.) 42 • (42 in.)	SNC • Solid non-flanged cover SFC • Solid flanged cover VFC • Ventilated flanged cover PFC • Peaked flanged cover **	72 • (72 in.) 3 • (3 m)

\* Hot-Dipped Covers only available in 72 in. and 1500 mm lengths.

### Fitting Cover Number Selection

<b>(SPW 12)SNCHB9024</b>					
Material Prefix	Width	Cover Type	Fitting Type	Degree*	Nominal Radius
SPW • Pregalvanized SHW • Hot-dipped galvanized SSW • Stainless steel 316	06 • (6 in.) 09 • (9 in.) 12 • (12 in.) 18 • (18 in.) 24 • (24 in.) 30 • (30 in.) 36 • (36 in.) 42 • (42 in.)	SNC • Solid non-flanged cover SFC • Solid flanged cover VFC • Ventilated flanged cover	HB • Horizontal bend VI • Vertical inside bend HT • Horizontal tee HX • Horizontal cross VTU • Vertical tee up HYR • Horizontal wye right HYL • Horizontal wye left	30 • (30°) 45 • (45°) 60 • (60°) 90 • (90°)	12 • (12 in.) 24 • (24 in.) 36 • (36 in.) 48 • (48 in.)

\* Required for HB & VI only.

## Covers

### Fitting Cover Number Selection (cont'd)

**(SPW1812)SNCRT12**

Material Prefix	Width 1	Width 2	Cover Type	Fitting Type	Radius*
SPW • Pregalvanized SHW • Hot-dipped galvanized SSW • Stainless steel 316	06 • (6 in.) 09 • (9 in.) 12 • (12 in.) 18 • (18 in.) 24 • (24 in.) 30 • (30 in.) 36 • (36 in.) 42 • (42 in.)	06 • (6 in.) 09 • (9 in.) 12 • (12 in.) 18 • (18 in.) 24 • (24 in.) 30 • (30 in.) 36 • (36 in.) 42 • (42 in.)	SNC • Solid non-flanged cover SFC • Solid flanged cover VFC • Ventilated flanged cover	RT • Horizontal reduce tee ET • Horizontal expand tee EX • Horizontal expand tee & reduce cross HSR • Horizontal straight reducer HLR • Horizontal left reducer HRR • Horizontal right reducer	12 • (12 in.) 24 • (24 in.) 36 • (36 in.) 48 • (48 in.)

\* Radius not required for HSR, HLR, HRR.

### Fitting Cover Number Selection

**(SPW412)SNCVO9024**

Material Prefix	Side Rail Height	Width	Cover Type	Fitting Type	Degree*	Nominal Radius
SPW • Pregalvanized SHW • Hot-dipped galvanized SSW • Stainless steel 316	3 • (3-5/8 in.) 4 • (4 in.) 5 • (5 in.) 6 • (6 in.) 7 • (7 in.)	06 • (6 in.) 09 • (9 in.) 12 • (12 in.) 18 • (18 in.) 24 • (24 in.) 30 • (30 in.) 36 • (36 in.) 42 • (42 in.)	SNC • Solid non-flanged cover SFC • Solid flanged cover VFC • Ventilated flanged cover	VO • Vertical outside bend VTD • Vertical tee down CS • Cable support fitting	30 • (30°) 45 • (45°) 60 • (60°) 90 • (90°)	12 • (12 in.) 24 • (24 in.) 36 • (36 in.) 48 • (48 in.)

\* Required for VO only.

## Covers

### Peaked Covers

#### Steel Number Selection

## SHW-24-PFC-HB-90-24

Material Prefix	Width	Cover Type	Fitting Type	Degree	Nominal Radius
SHW • Hot-dipped galvanized SSW • Stainless steel 316	06 • (6 in.) 09 • (9 in.) 12 • (12 in.) 18 • (18 in.) 24 • (24 in.) 30 • (30 in.) 36 • (36 in.) 42 • (42 in.)	PFC • Peaked flanged cover PVC • Peaked vented flanged cover	HB • Horizontal bend VI • Vertical inside bend	30 • (30°) 45 • (45°) 60 • (60°) 90 • (90°)	12 • (12 in.) 24 • (24 in.) 36 • (36 in.) 48 • (48 in.)

Note: Pregalvanized not available.

#### Steel Number Selection

## SSW-6-24-PFC-VO-90-24

Material Prefix	Side Rail Height	Width	Cover Type	Fitting Type	Degree	Nominal Radius
SHW • Hot-dipped galvanized SSW • Stainless steel 316	4 • (4 in.) 5 • (5 in.) 6 • (6 in.) 7 • (7 in.)	06 • (6 in.) 09 • (9 in.) 12 • (12 in.) 18 • (18 in.) 24 • (24 in.) 30 • (30 in.) 36 • (36 in.) 42 • (42 in.)	PFC • Peaked flanged cover PVC • Peaked vented flanged cover	VO • Vertical outside bend	30 • (30°) 45 • (45°) 60 • (60°) 90 • (90°)	12 • (12 in.) 24 • (24 in.) 36 • (36 in.) 48 • (48 in.)

Note: Pregalvanized not available.

#### Steel Number Selection

## SHW-24-PFC-HT-24

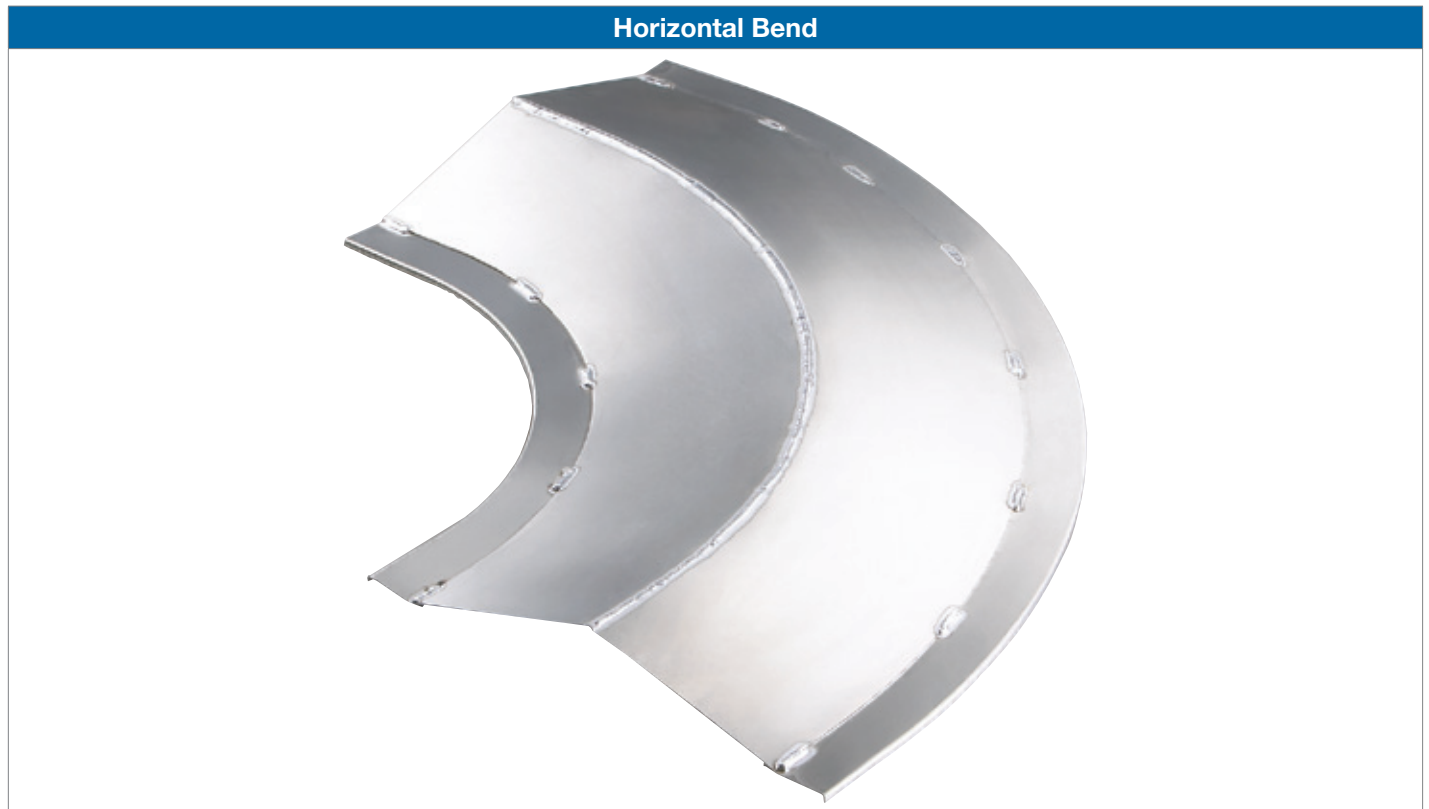
Material Prefix	Width	Cover Type	Fitting Type	Nominal Radius
SHW • Hot-dipped galvanized SSW • Stainless steel 316	06 • (6 in.) 09 • (9 in.) 12 • (12 in.) 18 • (18 in.) 24 • (24 in.) 30 • (30 in.) 36 • (36 in.) 42 • (42 in.)	PFC • Peaked flanged cover PVC • Peaked vented flanged cover	HT • Horizontal tee	12 • (12 in.) 24 • (24 in.) 36 • (36 in.) 48 • (48 in.)

Note: Pregalvanized not available.

## Covers

### Peaked Covers

#### Horizontal Bend / Vertical Inside Bend



### Steel Number Selection

## SHW-12-PFC-HB-90-24

Material Prefix	Width	Cover Type	Fitting Type	Degree	Radius
SHW SSW	06 • (6 in.) 09 • (9 in.) 12 • (12 in.) 18 • (18 in.) 24 • (24 in.) 30 • (30 in.) 36 • (36 in.) 42 • (42 in.)	PFC • Peaked flanged cover PVC • Peaked ventilated flanged cover	HB • Horizontal bend VI • Vertical inside bend	30 • (30°) 45 • (45°) 60 • (60°) 90 • (90°)	12 • (12 in.) 24 • (24 in.) 36 • (36 in.) 48 • (48 in.)

Note: Pregalvanized not available.

## Covers

### Peaked Covers

#### Vertical Outside Bend



### Steel Number Selection

## SHW-4-12-PFC-VO-90-24

Material Prefix	Side Rail Height	Width	Cover Type	Fitting Type	Degree	Radius
SHW SSW	4 • (4 in.) 5 • (5 in.) 6 • (6 in.) 7 • (7 in.)	06 • (6 in.) 09 • (9 in.) 12 • (12 in.) 18 • (18 in.) 24 • (24 in.) 30 • (30 in.) 36 • (36 in.) 42 • (42 in.)	PFC • Peaked flanged cover PVC • Peaked ventilated flanged cover	VO • Vertical outside bend	30 • (30°) 45 • (45°) 60 • (60°) 90 • (90°)	12 • (12 in.) 24 • (24 in.) 36 • (36 in.) 48 • (48 in.)

## Covers

### Peaked Covers

#### Horizontal Tee



### Steel Number Selection

## SHW-12-PFC-HT-24

Material Prefix	Width	Cover Type	Fitting Type	Radius
SHW SSW	06 • (6 in.) 09 • (9 in.) 12 • (12 in.) 18 • (18 in.) 24 • (24 in.) 30 • (30 in.) 36 • (36 in.) 42 • (42 in.)	PFC • Peaked flanged cover PVC • Peaked ventilated flanged cover	HT • Horizontal tee	12 • (12 in.) 24 • (24 in.) 36 • (36 in.) 48 • (48 in.)

## Covers

### Accessories For Covers

#### Quantity of Standard Cover Clamps Required

Quantity of Standard Cover Clamps Required	
<b>Straight section (6 ft.)</b>	4 pcs.
<b>Straight section (12 ft./ 3 m)</b>	6 pcs.
<b>Horizontal and vertical bends</b>	4 pcs.
<b>Tees</b>	6 pcs.
<b>Crosses</b>	8 pcs.

Note: When using the Heavy-Duty Cover Clamp, only half the quantity of pieces are required.

### Raised Cover Clamp



Designed to raise cover above tray for added ventilation.

Cat. No.	Cover Offset (in.)*	Material Prefix
SPW(*)RCC	1	SPW
	2	SSW

(\*) Insert cover offset.

### Peaked End Cap



Used for transition between peaked covers to straight covers.

Cat. No.	Width (in.)	Material Prefix
SPW(*)PEC SHW(*)PEC SSW(*)PEC	06	SPW SHW SSW
	09	
	12	
	18	
	24	
	30	
	36	
42		

(\*) Insert width



## Covers

### Accessories For Covers

#### Cover Clamp



Rigid indoor cover clamp for flat and flanged covers.

Cat. No.	Material Prefix	Side Rail Height (in.)
(Prefix)-3-SCC (Prefix)-4-SCC (Prefix)-5-SCC (Prefix)-6-SCC (Prefix)-7-SCC	SHW SPW SSW	3
		4
		5
		6
		7

#### Heavy-Duty Cover Clamp



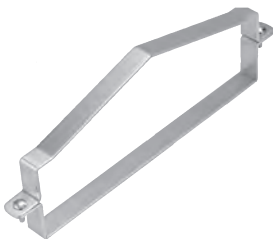
Wrap around design offers added protection for rugged applications and outdoor conditions.

Hardware included.

Cat. No.	Material Prefix	Tray Width (in.)	Side Rail Height (in.)
(Prefix)-3-(*)-HCC (Prefix)-4-(*)-HCC (Prefix)-5-(*)-HCC (Prefix)-6-(*)-HCC (Prefix)-7-(*)-HCC	SPW SHW SSW	06	3 4 5 6 7
		09	
		12	
		18	
		24	
		30	
		36	
		42	

(\*) Insert tray width

#### Heavy-Duty Peaked Cover Clamp



Wrap around design formed to fit peaked cover for outdoor applications.

Hardware included.

Cat. No.	Material Prefix	Tray Width (in.)	Side Rail Height (in.)
(Prefix)-3-(*)-HPC (Prefix)-4-(*)-HPC (Prefix)-5-(*)-HPC (Prefix)-6-(*)-HPC (Prefix)-7-(*)-HPC	SPW SHW SSW	06	3 4 5 6 7
		09	
		12	
		18	
		24	
		30	
		36	
		42	

(\*) Insert tray width

#### Cover Joint Strip



Strip used for joining covers end to end.

Cat. No.	Material	Tray Width (in.)
ABW-(*)-PCS	Plastic	06
		09
		12
		18
		24
		30
		36
42		

(\*) Insert tray width