

## Technical Specifications



**CI5164 /  
CI5168**



**CI7904 /  
CI7912**

Cat. No.	Trade Size	
	E.M.T.	Rigid
<b>E.M.T. / Rigid Couplings (Zinc Alloy)</b>		
CI5164	1/2	1/2
CI5166	3/4	3/4
CI5168	1	1
Concrete-tight		
Cat. No.	Trade Size	
<b>3-piece Couplings (Machined steel)</b>		
CI7904	1/2	
CI7906	3/4	
CI7908	1	
CI7910	1-1/4	
CI7912	1-1/2	
EK-406	2	



# Rigid Conduit

Locknuts

# IBERVILLE®

## Technical Specifications



CI1704 /  
CI1748



CI1704-AL /  
CI1732-AL



CI1703-PL /  
CI1706-PL



CI1704-SL /  
CI1732-SL



LN-201 /  
LN-210

Steel	Aluminum	Cat. No.			Trade Size
		Nylon	Sealing	Zinc	
<b>Locknuts</b>					
—	—	CI1703-PL	—	—	3/8
CI1704	CI1704-AL	CI1704-PL	CI1704-SL	LN-201	1/2
CI1706	CI1706-AL	CI1706-PL	CI1706-SL	LN-202	3/4
CI1708	CI1708-AL	—	CI1708-SL	LN-203	1
CI1710	CI1710-AL	—	CI1710-SL	LN-204	1-1/4
CI1712	CI1712-AL	—	CI1712-SL	LN-205	1-1/2
CI1716	CI1716-AL	—	CI1716-SL	LN-206	2
CI1720	CI1720-AL	—	CI1720-SL	LN-207	2-1/2
CI1724	CI1724-AL	—	CI1724-SL	LN-208	3
CI1728	CI1728-AL	—	CI1728-SL	LN-209	3-1/2
CI1732	CI1732-AL	—	CI1732-SL	LN-210	4
CI1740	—	—	—	—	5
CI1748	—	—	—	—	6



## Technical Specifications



**CIRB6R4 /  
CIRB16R12**



**BU-201 /  
BU-210**



**CI2404 /  
CI2448**



**CI2704 /  
CI2748**

Rated 105°C



**CI2604 /  
CI2632**

With solid copper lug.

Cat. No.	Trade Size	Cat. No.	Trade Size
<b>Reducing Bushings - NPS (Steel)</b>		<b>Insulated Metallic Bushings (Aluminum)</b>	
CIRB6R4	3/4 x 1/2	CI2404	1/2
CIRB8R4	1 x 1/2	CI2406	3/4
CIRB8R6	1 x 3/4	CI2408	1
CIRB10R4	1-1/4 x 1/2	CI2410	1-1/4
CIRB10R6	1-1/4 x 3/4	CI2412	1-1/2
CIRB10R8	1-1/4 x 1	CI2416	2
CIRB12R4	1-1/2 x 1/2	CI2420	2-1/2
CIRB12R6	1-1/2 x 3/4	CI2424	3
CIRB12R8	1-1/2 x 1	CI2428	3-1/2
CIRB12R10	1-1/2 x 1-1/4	CI2432	4
CIRB16R4	2 x 1/2	CI2440	5
CIRB16R6	2 x 3/4		
CIRB16R8	2 x 1	<b>Plastic Bushings</b>	
CIRB16R10	2 x 1-1/4	CI2704	1/2
CIRB16R12	2 x 1-1/2	CI2706	3/4
<b>Conduit Bushings (Zinc Die Cast)</b>		CI2708	1
BU-201	1/2	CI2710	1-1/4
BU-202	3/4	CI2712	1-1/2
BU-203	1	CI2716	2
BU-204	1-1/4	CI2720	2-1/2
BU-205	1-1/2	CI2724	3
BU-206	2	CI2728	3-1/2
BU-207	2-1/2	CI2732	4
BU-208	3	CI2740	5
BU-209	3-1/2	CI2748	6
BU-210	4		

Models CI2404 & CI2406 are in zinc.

Cat. No.	Trade Size	Ground Wire Size (AWG)
<b>Insulated Grounding Bushings (Aluminum)</b>		
CI2604	1/2	14-6
CI2606	3/4	14-6
CI2608	1	14-6
CI2610	1-1/4	14-4
CI2612	1-1/2	14-4
CI2616	2	6-1/0
CI2620	2-1/2	6-1/0
CI2624	3	2-4/0
CI2628	3-1/2	2-4/0
CI2632	4	2-4/0



# Rigid Conduit

Pull Elbows and Conduit Fittings

# IBERVILLE®

## Technical Specifications



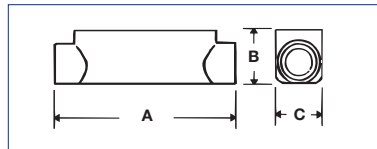
**CI7204 /  
CI7206**

Zinc Die Cast Locknut



**CI7304 (-G) /  
CI7310 (-G)**

-G: with gasket



**CICA-1/2 /  
CICA-2**

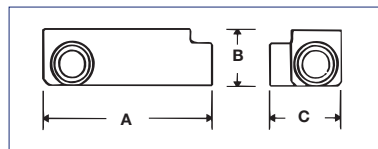


**CICA-2-1/2 /  
CICA-4**



**CILRL-1/2 /  
CILRL-2**

Supplied with 2 covers



**CILL-2 1/2 /  
CILL-4**



**CILR-2 1/2 /  
CILR-4**

Cat. No.	Trade Size	Dimensions		
		A	B	C
<b>Pull Elbows, Rigid to Box (Zinc Alloy)</b>				
CI7204	1/2	1-5/16	1-1/8	—
CI7206	3/4	1-5/8	1-5/16	—
<b>Pull Elbows, Rigid to Rigid (Zinc Alloy)</b>				
CI7304	1/2	1-5/16	1-1/8	—
CI7306	3/4	1-7/16	1-5/16	—
CI7304-G	1/2	1-5/16	1-1/8	—
CI7306-G	3/4	1-7/16	1-5/16	—
CI7308-G	1	2	1-5/8	—
CI7310-G	1-1/4	2-1/4	2	—
<b>Rigid Conduit Fittings - "C" Type (Cast Aluminum)</b>				
CICA-1/2	1/2	4-7/8	1-3/8	1-3/8
CICA-3/4	3/4	5-9/16	1-1/2	1-7/16
CICA-1	1	6-1/2	1-3/4	1-3/4
CICA-1-1/4	1-1/4	8-5/8	1-15/16	2-1/2
CICA-1-1/2	1-1/2	8-5/8	2-11/16	2-1/2
CICA-2	2	10-15/16	3	3-3/16
CICA-2-1/2	2-1/2	12-3/4	5-1/8	4-1/4
CICA-3	3	12-3/4	5-1/8	4-1/4
CICA-3-1/2	3-1/2	15	6-1/2	5-1/4
CICA-4	4	15	6-1/2	5-1/4
<b>Rigid Conduit Fittings - "LRL" Type (Cast Aluminum)</b>				
CILRL-1/2	1/2	4-7/16	1-11/16	2-1/8
CILRL-3/4	3/4	5-3/16	1-7/8	2-1/4
CILRL-1	1	6	2-3/16	2-1/2
CILRL-1-1/4	1-1/4	7-15/16	2-3/4	3-1/2
CILRL-1-1/2	1-1/2	7-15/16	3-1/4	3-1/2
CILRL-2	2	10-3/16	3-11/16	4-1/8
<b>Rigid Conduit Fittings - "LL" Type (Cast Aluminum)</b>				
CILL-2 1/2	2-1/2	12-1/4	5-1/8	5-3/4
CILL-3	3	12-1/4	5-1/8	5-3/4
CILL-3 1/2	3-1/2	14-3/8	6-1/4	6-3/4
CILL-4	4	14-3/8	6-1/4	6-3/4
<b>Rigid Conduit Fittings - "LR" Type (Cast Aluminum)</b>				
CILR-2 1/2	2-1/2	12-1/4	5-1/8	5-3/4
CILR-3	3	12-1/4	5-1/8	5-3/4
CILR-3 1/2	3-1/2	14-3/8	6-1/4	6-3/4
CILR-4	4	14-3/8	6-1/4	6-3/4

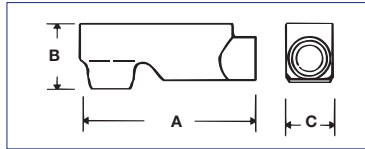
Gaskets and covers are included with all rigid conduit fittings. CICA-1/2 to CICA-2 and all CILRL are also suitable for use with EMT conduit.



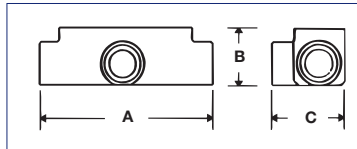
## Technical Specifications



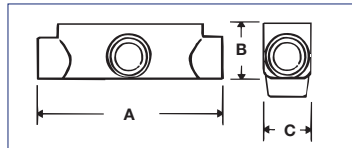
**CILBA-1/2 /  
CILBA-2**



**CIELBA-2 1/2 /  
CIELBA-4**



**CITA-1/2 /  
CITA-4**



**CITBA-1/2 /  
CITBA-2**



**CIBC-1/2 /  
CIBC-2**



**CIG-1/2 /  
CIG-2**

Cat. No.	Trade Size	Dimensions		
		A	B	C
<b>Rigid Conduit Fittings - "LB" Type (Cast Aluminum)</b>				
<b>CILBA-1/2</b>	1/2	4-5/16	1-1/2	1-3/8
<b>CILBA-3/4</b>	3/4	4-15/16	1-7/8	1-9/16
<b>CILBA-1</b>	1	6-1/16	2-1/16	1-13/16
<b>CILBA-1-1/4</b>	1-1/4	7-7/8	2-15/16	2-1/2
<b>CILBA-1-1/2</b>	1-1/2	7-7/8	3-1/16	2-1/2
<b>CILBA-2</b>	2	10	3-3/4	3-3/16
<b>CIELBA-2-1/2</b>	2-1/2	13-3/8	5-1/4	5-1/8
<b>CIELBA-3</b>	3	13-3/8	5-1/4	5-1/8
<b>CIELBA-3-1/2</b>	3-1/2	16-1/8	6-11/16	5-7/8
<b>CIELBA-4</b>	4	16-1/8	6-11/16	5-7/8

<b>Rigid Conduit Fittings - "T" Type (Cast Aluminum)</b>				
<b>CITA-1/2</b>	1/2	4-7/8	1-3/8	2-1/16
<b>CITA-3/4</b>	3/4	5-9/16	1-3/4	2-1/8
<b>CITA-1</b>	1	6-1/2	2	2-1/2
<b>CITA-1-1/4</b>	1-1/4	8-11/16	2-5/8	3-1/2
<b>CITA-1-1/2</b>	1-1/2	8-11/16	3	3-9/16
<b>CITA-2</b>	2	10-7/8	3-1/4	4-3/16
<b>CITA-2-1/2</b>	2-1/2	12-5/8	6-3/8	5-3/4
<b>CITA-3</b>	3	12-5/8	6-3/8	5-3/4
<b>CITA-3-1/2</b>	3-1/2	14-7/8	7-1/8	6-3/4
<b>CITA-4</b>	4	14-7/8	7-1/8	6-3/4

<b>Rigid Conduit Fittings - "TB" Type (Cast Aluminum)</b>				
<b>CITBA-1/2</b>	1/2	4-3/8	1-3/8	1-3/8
<b>CITBA-3/4</b>	3/4	5-1/8	2-1/8	1-9/16
<b>CITBA-1</b>	1	6	2-1/2	1-13/16
<b>CITBA-1-1/4</b>	1-1/4	8-1/8	3-1/2	2-1/2
<b>CITBA-1-1/2</b>	1-1/2	8-1/8	3-1/2	2-1/2
<b>CITBA-2</b>	2	10-1/4	4-5/16	3-1/8

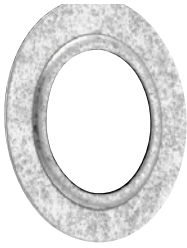
Gaskets and covers are included with all rigid conduit fittings. CILBA and CITA-1/2 to CITA-2 are also suitable for use with EMT conduit

Cat. No.	Trade Size	Cat. No.	Trade Size
<b>Blank Covers for Aluminum Conduit Fittings (Stamped Aluminum)</b>		<b>Gaskets for Aluminum Conduit Fittings (Neoprene)</b>	
<b>CIBC-1/2</b>	1/2	<b>CIG-1/2</b>	1/2
<b>CIBC-3/4</b>	3/4	<b>CIG-3/4</b>	3/4
<b>CIBC-1</b>	1	<b>CIG-1</b>	1
<b>CIBC-1-1/4</b>	1-1/4	<b>CIG-1-1/4</b>	1-1/4
<b>CIBC-2</b>	2	<b>CIG-2</b>	2

For 1-1/2, use CIBC-1-1/4

For 1-1/2, use CIG-1-1/4





**CI6R4 /  
CI24R20**



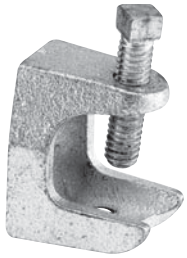
**CI3504 \* /  
CI3516 \***

## Technical Specifications

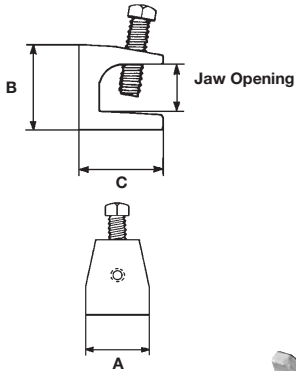
Cat. No.	Trade Size
<b>Reducing Washers (Steel)</b>	
<b>WA-110 *</b>	1/2 x 3/8
<b>CI6R4</b>	3/4 x 1/2
<b>CI8R4</b>	1 x 1/2
<b>CI8R6</b>	1 x 3/4
<b>CI10R4</b>	1-1/4 x 1/2
<b>CI10R6</b>	1-1/4 x 3/4
<b>CI10R8</b>	1-1/4 x 1
<b>CI12R4</b>	1-1/2 x 1/2
<b>CI12R6</b>	1-1/2 x 3/4
<b>CI12R8</b>	1-1/2 x 1
<b>CI12R10</b>	1-1/2 x 1-1/4
<b>CI16R4</b>	2 x 1/2
<b>CI16R6</b>	2 x 3/4
<b>CI16R8</b>	2 x 1
<b>CI16R10</b>	2 x 1-1/4
<b>CI16R12</b>	2 x 1-1/2
<b>CI20R4</b>	2-1/2 x 1/2
<b>CI20R6</b>	2-1/2 x 3/4
<b>CI20R8</b>	2-1/2 x 1
<b>CI20R10</b>	2-1/2 x 1-1/4
<b>CI20R12</b>	2-1/2 x 1-1/2
<b>CI20R16</b>	2-1/2 x 2
<b>CI24R4</b>	3 x 1/2
<b>CI24R6</b>	3 x 3/4
<b>CI24R8</b>	3 x 1
<b>CI24R10</b>	3 x 1-1/4
<b>CI24R12</b>	3 x 1-1/2
<b>CI24R16</b>	3 x 2
<b>CI24R20</b>	3 x 2-1/2
<b>Knockout Closures (Steel)</b>	
<b>CI3504 *</b>	1/2
<b>CI3506 *</b>	3/4
<b>CI3508 *</b>	1
<b>CI3510 *</b>	1-1/4
<b>CI3512 *</b>	1-1/2
<b>CI3516 *</b>	2

\* Not CSA approved





**500-SC /  
503-SC**



## Technical Specifications

Cat. No.	Trade Size	Jaw Opening	Tap Base and Back	Dimensions		
				A	B	C
<b>Beam Clamps (Malleable Iron)</b>						
500-SC	1/4NC	15/16	1/4-20	1	1-1/4	1-7/16
501	5/16NC	7/8	5/16-18	1-9/16	1-9/16	1-11/16
502	3/8NC	1	3/8-16	2	1-7/8	1-3/4
503-SC	1/2NC	1	1/2-13	2-1/2	2-3/8	2-3/8



**PC-3/8 /  
PC-4**



**RCS-1/2 /  
RCS-2**



**RC-1/2 /  
RC-4-SC**



**EC-1/2 /  
EC-3**

Cat. No.	Trade Size	Cat. No.	Trade Size
<b>RCS Type Beam Clamps (Steel)</b>		<b>EC Type Beam Clamps (Malleable Iron)</b>	
RCS-1/2	1/2	EC-1/2	1/2
RCS-3/4	3/4	EC-3/4	3/4
RCS-1	1	EC-1	1
RCS-1-1/4	1-1/4	EC-1-1/4	1-1/4
RCS-1-1/2	1-1/2	EC-1-1/2	1-1/2
RCS-2	2	EC-2	2
<b>PC Type Beam Clamps (Malleable Iron)</b>		EC-2-1/2	2-1/2
PC-3/8	3/8	EC-3	3
PC-1/2	1/2	<b>RC Type Beam Clamps (Malleable Iron)</b>	
PC-3/4	3/4	RC-1/2	1/2
PC-1	1	RC-3/4	3/4
PC-1-1/4	1-1/4	RC-1	1
PC-1-1/2	1-1/2	RC-1-1/4	1-1/4
PC 2SC	2	RC-1-1/2	1-1/2
PC-2-1/2	2-1/2	RC-2-SC	2
PC-3	3	RC-2-1/2	2-1/2
PC-3-1/2	3-1/2	RC-3	3
PC-4	4	RC-3-1/2	3-1/2
		RC-4-SC	4



# Rigid Conduit

Accessories

# IBERVILLE®

## Technical Specifications



**HA-801**



**CI8004 /  
CI8008**



**CI8104 /  
CI8116**



**FP-401 /  
FP-406**

Cat. No.	Trade Size
<b>Conduit Nipples (Insulated)</b>	
HA-801	1/2
HA-802	3/4
HA-803	1
HA-804	1-1/4
HA-805	1-1/2
HA-806	2
HA-807	2-1/2
HA-808	3
HA-809	3-1/2
HA-810	4
<b>Conduit Nipples (Zinc Alloy)</b>	
CI8004	1/2
CI8006	3/4
CI8008	1
HA-204	1-1/4
HA-205	1-1/2
HA-206	2
HA-207	2-1/2
HA-208	3
HA-209	3-1/2
HA-210	4
<b>3/4" Offset Nipples (Zinc Alloy)</b>	
CI8104	1/2
CI8106	3/4
CI8108	1
CI8110	1-1/4
CI8112	1-1/2
CI8116	2
<b>Flange Plates</b>	
FP-401 *	1/2
FP-402 *	3/4
FP-403 *	1
FP-404 *	1-1/4
FP-405 *	1-1/2
FP-406 *	2

\* Not CSA certified





## Technical Specifications



CI1203 /  
CI1216 /



CI1503 /  
CI1548



CIEFA-1/2 /  
CIEFA-4



CI7538

Cat. No.	Trade Size	Max. Conduit Dia.	Hole Size
<b>One Hole Rigid Straps (Galvanized Steel)</b>			
CI1203	3/8	0.68	1/4
CI1204	1/2	0.84	1/4
CI1206	3/4	1.05	1/4
CI1208	1	1.32	5/16
CI1210	1-1/4	1.66	7/16
CI1212	1-1/2	1.90	7/16
CI1216	2	2.38	9/16
<b>Two Hole Rigid Straps (Galvanized Steel)</b>			
CI1503	3/8	0.68	3/16
CI1504	1/2	0.84	3/16
CI1506	3/4	1.05	3/16
CI1508	1	1.32	3/16
CI1510	1-1/4	1.66	1/4
CI1512	1-1/2	1.90	1/4
CI1516	2	2.38	9/32
CI1520	2-1/2	2.88	3/8
CI1524	3	3.50	3/8
CI1528	3-1/2	4.00	1/2
CI1532	4	4.50	1/2
CI1540	5	5.56	1/2
CI1548	6	6.63	1/2

Cat. No.	Trade Size
<b>Service Entrance Heads (Cast Aluminum)</b>	
CIEFA-1/2	1/2
CIEFA-3/4	3/4
CIEFA-1	1
CIEFA-1-1/4	1-1/4
CIEFA-1-1/2	1-1/2
CIEFA-2	2
CIEFA-2-1/2	2-1/2
CIEFA-3	3
CIEFA-3-1/2	3-1/2
CIEFA-4	4

Consult page 10 for technical specifications.

Cat. No.	Max. Flex. Conduit Dia.	Hole Size
<b>One Hole Double Sided Strap (Galvanized Steel)</b>		
CI7538*	1.05	3/16"

\*Any combination of 3/8", 1/2" and 3/4"  
EMT, rigid conduit, flexible conduit or teck cables

