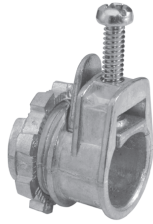


Technical Specifications



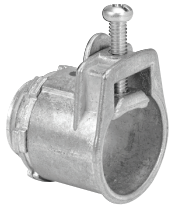
CI70

Zinc Die Cast Locknut



L-16

Zinc Die Cast Locknut



**CI71 /
CI73**

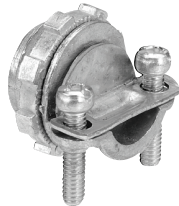
Zinc Die Cast Locknut



CI804

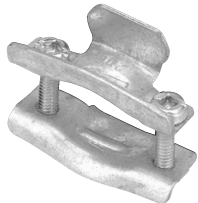


CI806

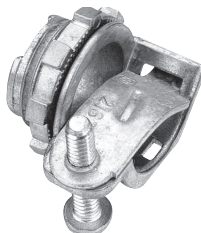


**CI808 /
CI816**

Zinc Die Cast Locknut



**CI2060 /
CI2061**



CI2163

Zinc Die Cast Locknut

Cat. No.	Trade Size	Clamping Range		Suggested Application NMD90 (loomex)
		min.	max.	
One Screw Connectors (Zinc Alloy)				
L-16	3/8	0.12	0.63	14/2, 14/3, 12/2, 12/3, 10/2
CI70	3/8	0.13	0.70	14/2-10/2; 14/3-10/3
CI71	1/2	0.33	0.95	8/2-4/2; 12/3-4/3
CI72	3/4	0.60	1.15	4/2-3/2; 4/3-3/3
CI73	1	0.93	1.47	2/2; 2/3
Two Screw Connectors (Zinc Alloy)				
CI804	3/8	0.18	0.64	14/2-10/2; 2# 14/2 and 2 # 12/2
CI806	3/4	0.41	0.82	8/2-6/3
CI808	1	0.50	1.04	4/2-2/2; 8/3-4/3
CI810	1-1/4	0.56	1.06	4/2-2/2; 8/3-4/3
CI812	1-1/2	0.63	1.60	4/2-2/2; 8/3-2/3
CI816	2	0.86	2.06	3/2-2/2; 6/3-2/3
Two Screw Connectors (Steel)				
CI2060	3/8	0.11	0.60	14/2-10/2; 14/3-10/3
CI2061	3/4	0.15	0.90	10/2-6/2; 10/3-6/3
One Screw Connectors (Zinc Alloy)				
CI2163	3/8	0.35	0.61	10/3

All NMD90 connectors are also suitable for NMWU90 of equivalent diameters, in dry locations.
NOTE: 3/8" trade size connectors require a 1/2" knockout.

Technical improvements are constantly taking place in the electrical industry. The cable manufacturers are changing their products from time to time. Accordingly, it is strongly suggested that you verify the cable size with the cable manufacturer prior to selecting a connector.



Nonmetallic Sheathed Cable

Connectors

IBERVILLE®

Technical Specifications



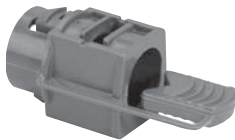
**CI2166 /
CI2167**

Zinc Die Cast Locknut



CI2175

Zinc Die Cast Locknut



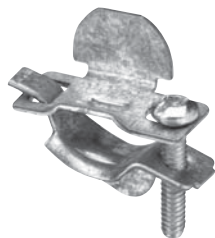
CI3360



**CI4004 /
W100LX-D**



CI4040



CI9049

Cat. No.	Trade Size	Clamping Range		Suggested Application NMD90 (loomex)
		min.	max.	
One Screw Connectors (Aluminum)				
CI2166	1/2	0.50	0.90	8/3-6/3
CI2167	3/4	0.71	1.10	6/3-4/3
Duplex Connectors (Zinc Alloy)				
One Screw				
CI2175	3/8	0.15	0.65	14/2-10/2; 14/3-10/3
Nonmetallic Connectors				
CI3360	1/2	0.30	0.60	14/2-10/2; 14/3-10/3 2 cables: 14/2-12/2
CI4004	1/2	0.21	0.42	14/2-10/2; 14/3-10/3 2 cables: 14/2-12/2
W100LX-D	1/2	0.21	0.42	14/2-10/2; 14/3-10/3 2 cables: 14/2-12/2
One Screw Connectors (Steel)				
CI4040	3/8	0.19	0.57	14/2-10/2; 14/3-10/3 2 cables: 14/2
CI9049	3/8	0.13	0.37	14/2-10/2; 14/3-12/3

All NMD90 connectors are also suitable for NMWU90 of equivalent diameters, in dry locations.
NOTE: 3/8 trade size connectors require a 1/2" knockout.

Technical improvements are constantly taking place in the electrical industry. The cable manufacturers are changing their products from time to time. Accordingly, it is strongly suggested that you verify the cable size with the cable manufacturer prior to selecting a connector.



Technical Specifications



CI0 / CI5



CI1-C



CI10 / CI11



CI1544



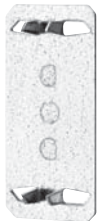
CI1544P



CIS-1X2



CIS-1 / CIS-4



CI66



CI66-FPP



CI66-T



CI66-PPH



CI66-SS



CI66-XL-2



CI66-XL

Cat. No.	Dimensions		Hole Size	Suggested Application NMD90 (loomex)
	H	W		
Cable Straps (Aluminum)				
CI0	0.44	0.63	3/16	14/3-12/3
CI1	0.50	0.56	3/16	10/3
CI1-C	0.50	0.50	3/16	14/2-12/2; 14/3-12/3
CI2	0.50	0.63	3/16	14/3-10/3
CI3	0.57	0.68	3/16	14/3-10/3
CI4	0.81	1.06	3/16	4/3
CI5	1.06	1.25	7/32	3/3-2/3
CI10	0.19	0.44	3/16	14/2
CI11	0.31	0.56	3/16	12/2-10/2
Nailing Straps (Zinc Plated Steel)				
CI1544	0.25	0.51	-	14/2-12/2
Nailing Straps (Polyethylene)				
CI1544-P	0.25	0.49	-	14/2-12/2
CI1546-P	0.25	0.75	-	14/2-8/2
Cable Staples (Galvanized Steel)				
CIS-1	0.25	0.48	-	14/2-12/2
CIS-2	0.44	0.54	-	2 cables 14/2 14/2-12/2-10/2-14/3-12/3
CIS-3	0.49	0.70	-	10/2-8/2; 14/3-10/3
CIS-4	0.76	0.86	-	8/3-6/3
Double Cable Staples (Galvanized Steel)				
CIS-1X2	0.25	0.48 x 2	-	14/2-12/2
CIS-1X2-FP3	0.25	0.48 x 2	-	14/2-12/2
CIS-1X2-FP5	0.25	0.48 x 2	-	14/2-12/2

Also suitable for NMWU90 of equivalent diameters.

Cat. No.	Suggested Application
Protector Plates (Galvanized Steel)	
CI66	For wood stud
CI66-FPP	For wood stud
CI66-PPH	For wood stud
CI66-SS	For metal stud
CI66-T	For wood stud
CI66-XL	For wood stud
CI66-XL-2	For wood stud

As required by C.E.C. rules 12-516 and 12-616.

