

# 4-1 1/16" Square Boxes

Conduit Knockouts

**IBERVILLE®**



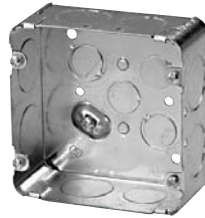
**CI72151-K**

Concentric knockouts.



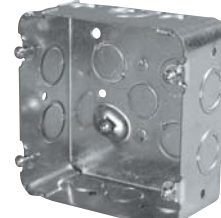
**BC73151-K**

Concentric knockouts.



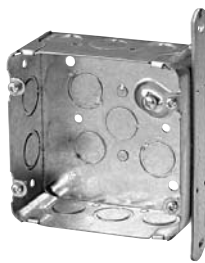
**CI72171-1**

1" knockouts.



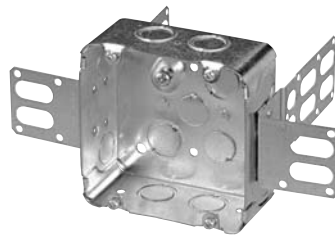
**BC72171-K**

Concentric knockouts.



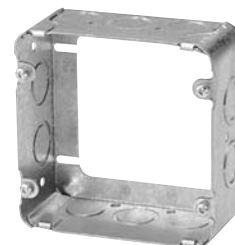
**CI72171-KSB**

Concentric knockouts.



**CI72171-KSSX**

Concentric knockouts / "Wraparound" brackets for 2-1/2" and 3-5/8" steel studs.



**BC73171-K**

Concentric knockouts.

## Technical Specifications

Cat. No.	Capacity (Cu. in.)	Features		Knockouts				
		bracket		1/2" sides	1/2" bottom	3/4" sides	3/4" bottom	1" sides
<b>1-1/2" Deep</b>								
<b>CI72151-K</b>	30.0	-	yes	10	4	6	2	-
<b>BC73151-K</b>	30.0	-	-	10	-	6	-	-
<b>2-1/8" Deep</b>								
<b>CI72171-1</b>	42.0	-	yes	-	4	2	2	6
<b>BC72171-K</b>	42.0	-	yes	10	4	6	2	-
<b>CI72171-KSB</b>	42.0	"SB"	yes	8	4	2	2	-
<b>CI72171-KSSX</b>	42.0	"SSX"	yes	4	4	4	2	-
<b>CI72171-1-SSX</b>	42.0	"SSX"-	-	-	4	2	2	4
<b>BC73171-K</b>	42.0	-	-	10	-	6	-	-

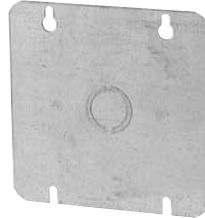
# 4-11/16" Square Boxes

Covers

**IBERVILLE®**



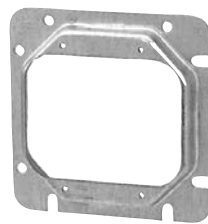
**BC72-C-1**



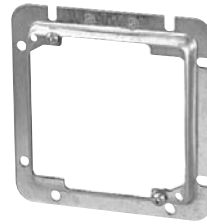
**BC72-C-6**



**CI72-C-10**  
**CI72-C-13**  
**CI72-C-14**



**BC72-C-17**



**CI72-A-52**

## Technical Specifications

Cat. No.	Description
<b>Flat Covers</b>	
<b>BC72-C-1</b>	Blank.
<b>BC72-C-6</b>	With concentric 1/2" and 3/4" conduit knockout.
<b>Single Device Covers</b>	
<b>CI72-C-10</b>	Raised 1/8". (1.7 cu. in.)
<b>CI72-C-13</b>	Raised 1/2". (4.3 cu. in.)
<b>CI72-C-14</b>	Raised 3/4". (6.2 cu. in.)
<b>Two Device Covers</b>	
<b>BC72-C-17</b>	Raised 1/2". (6.4 cu. in.)
<b>Adaptors</b>	
<b>CI72-A-52</b>	To install 4" square covers on 4-11/16" square boxes. Raised 1/4" (3.0 cu. in.).

