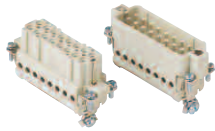




# HEAVY DUTY MULTIPOLE CONNECTORS

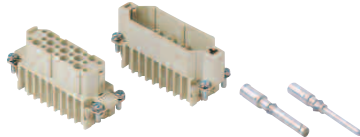
## Inserts



### Series A 16 poles + ⊕ 16A max - 600V

Part #	Screw Terminal
A16RS	female inserts
A16PS	male inserts

Wire conductor range: 18 ÷ 14 AWG



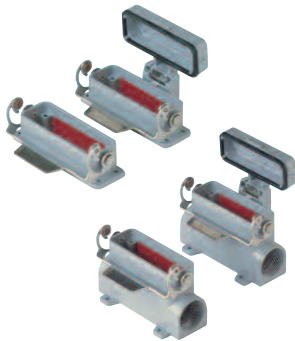
### Series D 25 poles + ⊕ 10A max - 600V

Part #	Crimp Terminal
D25RC	female inserts
D25PC	male inserts

Wire conductor range: 22 ÷ 14 AWG

10A Crimp Contacts must be ordered separately, see page B-28

## Bases



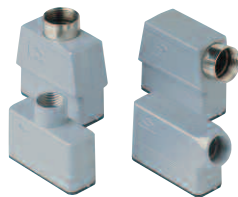
### Series A 16 poles + ⊕

Part #	Panel Mounting Housings
APML16S	single lever
APML16SC	single lever and cover

Part #	Surface Mounting Housings	cable gland
AS1L16S4	single lever, single port, high construction	Pg 16
AS2L16S4	single lever, double port, high construction	Pg 16 x 2
AS1L16S5	single lever, single port, high construction	Pg 21
AS2L16SC5	single lever and cover, double port, high construction	Pg 21 x 2

To convert to "NPT", see page B-28

## Hoods



### Series A 16 poles + ⊕

Part #	Hoods	cable gland
ASEP16S4	two pegs, side entry	Pg 16
ASTP16S4	two pegs, side entry, high construction	Pg 16
ASTP16S5	two pegs, side entry, high construction	Pg 21
ATEP16S4	two pegs, top entry	Pg 16
ATTP16S4	two pegs, top entry, high construction	Pg 16
ATTP16S5	two pegs, top entry, high construction	Pg 21

ACC16S4 single lever, top entry, cable coupler (not shown) Pg 16

To convert to "NPT", see page B-28

## Covers



### Series A 16 poles + ⊕

Part #	Covers
AP16SL	two pegs (for housings with single lever)
AL16SL	single lever (for hoods with two pegs)

# HEAVY DUTY MULTIPOLE CONNECTORS



## Crimp Contacts

B

10A Crimp Contact



16A Crimp Contact



40A Crimp Contact



### 10A Crimp Contact

Part #	Female Crimp Contacts
S22	0.14 ÷ 0.37 mm <sup>2</sup> , AWG 26 ÷ 22
S20	0.5 mm <sup>2</sup> , AWG 20
S18A	0.75 mm <sup>2</sup> , AWG 18
S18B	1 mm <sup>2</sup> , AWG 18
S16	1.5 mm <sup>2</sup> , AWG 16
S14	2.5 mm <sup>2</sup> , AWG 14

Part #	Male Crimp Contacts
P22	0.14 ÷ 0.37 mm <sup>2</sup> , AWG 26 ÷ 22
P20	0.5 mm <sup>2</sup> , AWG 20
P18A	0.75 mm <sup>2</sup> , AWG 18
P18B	1 mm <sup>2</sup> , AWG 18
P16	1.5 mm <sup>2</sup> , AWG 16
P14	2.5 mm <sup>2</sup> , AWG 14

Use Crimp Tool "CCPZ MIL" see page B-27

### 40A Crimp Contact

Part #	Female Crimp Contacts
SS16	1.5 mm <sup>2</sup> , AWG 16
SS14	2.5 mm <sup>2</sup> , AWG 14
SS12	4 mm <sup>2</sup> , AWG 12
SS10	6 mm <sup>2</sup> , AWG 10

Part #	Male Crimp Contacts
SP16	1.5 mm <sup>2</sup> , AWG 16
SP14	2.5 mm <sup>2</sup> , AWG 14
SP12	4 mm <sup>2</sup> , AWG 12
SP10	6 mm <sup>2</sup> , AWG 10

Use Crimp Tool "CXPZ D" see page B-27

### 16A Crimp Contact

Part #	Female Crimp Contacts
ES22	0.14 ÷ 0.37 mm <sup>2</sup> , AWG 26 ÷ 22
ES20	0.5 mm <sup>2</sup> , AWG 20
ES18A	0.75 mm <sup>2</sup> , AWG 18
ES18B	1 mm <sup>2</sup> , AWG 18
ES16	1.5 mm <sup>2</sup> , AWG 16
ES14	2.5 mm <sup>2</sup> , AWG 14
ES12	4 mm <sup>2</sup> , AWG 12

Part #	Male Crimp Contacts
EP22	0.14 ÷ 0.37 mm <sup>2</sup> , AWG 26 ÷ 22
EP20	0.5 mm <sup>2</sup> , AWG 20
EP18A	0.75 mm <sup>2</sup> , AWG 18
EP18B	1 mm <sup>2</sup> , AWG 18
EP16	1.5 mm <sup>2</sup> , AWG 16
EP14	2.5 mm <sup>2</sup> , AWG 14
EP12	4 mm <sup>2</sup> , AWG 12

Use Crimp Tool "CCPZ MIL" see page B-27

## HOW TO CONVERT HOODS & BASES FROM PG TO NPT

Change the last number in the part number as follows:

Thread size	Pg to NPT	Metric to NPT	Thread size
Pg 11 to 3/8" NPT	2 to 9	16 to 9	M16 - 3/8"
Pg 11 to 1/2" NPT	2 to 10	16 to 10	M16 - 1/2"
Pg 13.5 to 1/2" NPT	3 to 10	20 to 10	M20 - 1/2"
Pg 16 to 1/2" NPT	4 to 10	25 to 10	M25 - 1/2"
Pg 21 to 3/4" NPT	5 to 11	25 to 11	M25 - 3/4"
Pg 29 to 1" NPT	6 to 12	32 to 11	M32 - 3/4"
Pg 29 to 1 1/4" NPT	6 to 13	32 to 12	M32 - 1"
Pg 36 to 1 1/4" NPT	7 to 13	32 to 13	M32 - 1 1/4"
Pg 36 to 1 1/2" NPT	7 to 14	40 to 12	M40 - 1"
Pg 42 to 1 1/2" NPT	8 to 14	40 to 13	M40 - 1 1/4"
		50 to 14	M50 - 1 1/2"

**Examples:**

ES1L06S4 (Pg 16) → ES1L06S10 (1/2" NPT)  
 ETTP16D5 (Pg 21) → ETTP16D11 (3/4" NPT)