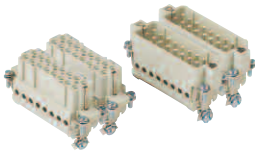




HEAVY DUTY MULTIPOLE CONNECTORS

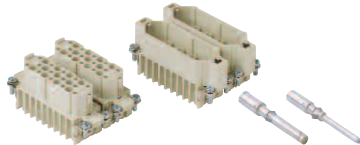
Inserts



Series A **32 poles + ⊕ 16A max - 600V**

Part #	Screw Terminal
A16RS + A32RS	female inserts, No. (1 ÷ 16) and (17 ÷ 32)
A16PS + A32PS	male inserts, No. (1 ÷ 16) and (17 ÷ 32)

+ Both part numbers **must** be ordered **Wire conductor range: 18 ÷ 14 AWG**



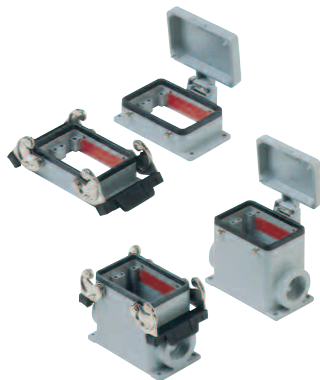
Series D **50 poles + ⊕ 10A max - 600V**

Part #	Crimp Terminal
D25RC(x2)	female inserts, No. (1 ÷ 25)
D25PC(x2)	male inserts, No. (1 ÷ 25)

Wire conductor range: 22 ÷ 14 AWG

10A Crimp Contacts must be ordered separately, see page B-28

Bases



Series A **32 poles + ⊕**

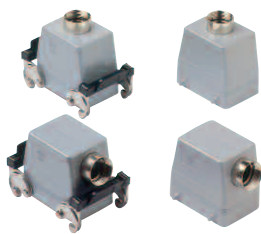
Part #	Panel Mounting Housings
APML32D	double levers
APMP32DC	four pegs and cover

Part #	Surface Mounting Housings	cable gland
AS1L32D5	double levers, single port	Pg 21
AS2L32D5	double levers, double port	Pg 21 x 2
AS1L32D6	double levers, single port	Pg 29
AS2L32D6	double levers, double port	Pg 29 x 2

AS1P32DC5	four pegs and cover, single port	Pg 21
AS2P32DC5	four pegs and cover, double port	Pg 21 x 2
AS1P32DC6	four pegs and cover, single port	Pg 29
AS2P32DC6	four pegs and cover, double port	Pg 29 x 2

To convert to "NPT", see page B-28

Hoods



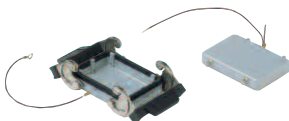
Series A **32 poles + ⊕**

Part #	Hoods	cable gland
ASEP32D5	four pegs, side entry	Pg 21
ASTP32D5	four pegs, side entry, high construction	Pg 21
ASTP32D6	four pegs, side entry, high construction	Pg 29
ATTP32D5	four pegs, top entry, high construction	Pg 21
ATTP32D6	four pegs, top entry, high construction	Pg 29
ASEL32D5	double levers, side entry	Pg 21
ASTL32D5	double levers, side entry, high construction	Pg 21
ASTL32D6	double levers, side entry, high construction	Pg 29
ATTL32D5	double levers, top entry, high construction	Pg 21
ATTL32D6	double levers, top entry, high construction	Pg 29

ACC32D6 double levers, top entry, cable coupler (not shown) Pg 29

To convert to "NPT", see page B-28

Covers



Series A **32 poles + ⊕**

Part #	Covers
AP32DL	four pegs (for housings with double levers)
AL32DL	double levers (for hoods with four pegs)



HEAVY DUTY MULTIPOLE CONNECTORS

Crimp Contacts

B

10A Crimp Contact



16A Crimp Contact



40A Crimp Contact



10A Crimp Contact

Part #	Female Crimp Contacts
S22	0.14 ÷ 0.37 mm ² , AWG 26 ÷ 22
S20	0.5 mm ² , AWG 20
S18A	0.75 mm ² , AWG 18
S18B	1 mm ² , AWG 18
S16	1.5 mm ² , AWG 16
S14	2.5 mm ² , AWG 14

Part #	Male Crimp Contacts
P22	0.14 ÷ 0.37 mm ² , AWG 26 ÷ 22
P20	0.5 mm ² , AWG 20
P18A	0.75 mm ² , AWG 18
P18B	1 mm ² , AWG 18
P16	1.5 mm ² , AWG 16
P14	2.5 mm ² , AWG 14

Use Crimp Tool "CCPZ MIL" see page B-27

40A Crimp Contact

Part #	Female Crimp Contacts
SS16	1.5 mm ² , AWG 16
SS14	2.5 mm ² , AWG 14
SS12	4 mm ² , AWG 12
SS10	6 mm ² , AWG 10

Part #	Male Crimp Contacts
SP16	1.5 mm ² , AWG 16
SP14	2.5 mm ² , AWG 14
SP12	4 mm ² , AWG 12
SP10	6 mm ² , AWG 10

Use Crimp Tool "CXPZ D" see page B-27

16A Crimp Contact

Part #	Female Crimp Contacts
ES22	0.14 ÷ 0.37 mm ² , AWG 26 ÷ 22
ES20	0.5 mm ² , AWG 20
ES18A	0.75 mm ² , AWG 18
ES18B	1 mm ² , AWG 18
ES16	1.5 mm ² , AWG 16
ES14	2.5 mm ² , AWG 14
ES12	4 mm ² , AWG 12

Part #	Male Crimp Contacts
EP22	0.14 ÷ 0.37 mm ² , AWG 26 ÷ 22
EP20	0.5 mm ² , AWG 20
EP18A	0.75 mm ² , AWG 18
EP18B	1 mm ² , AWG 18
EP16	1.5 mm ² , AWG 16
EP14	2.5 mm ² , AWG 14
EP12	4 mm ² , AWG 12

Use Crimp Tool "CCPZ MIL" see page B-27

HOW TO CONVERT HOODS & BASES FROM PG TO NPT

Change the last number in the part number as follows:

Thread size	Pg to NPT	Metric to NPT	Thread size
Pg 11 to 3/8" NPT	2 to 9	16 to 9	M16 - 3/8"
Pg 11 to 1/2" NPT	2 to 10	16 to 10	M16 - 1/2"
Pg 13.5 to 1/2" NPT	3 to 10	20 to 10	M20 - 1/2"
Pg 16 to 1/2" NPT	4 to 10	25 to 10	M25 - 1/2"
Pg 21 to 3/4" NPT	5 to 11	25 to 11	M25 - 3/4"
Pg 29 to 1" NPT	6 to 12	32 to 11	M32 - 3/4"
Pg 29 to 1 1/4" NPT	6 to 13	32 to 12	M32 - 1"
Pg 36 to 1 1/4" NPT	7 to 13	32 to 13	M32 - 1 1/4"
Pg 36 to 1 1/2" NPT	7 to 14	40 to 12	M40 - 1"
Pg 42 to 1 1/2" NPT	8 to 14	40 to 13	M40 - 1 1/4"
		50 to 14	M50 - 1 1/2"

Examples:

ES1L06S4 (Pg 16) → ES1L06S10 (1/2" NPT)
 ETTP16D5 (Pg 21) → ETTP16D11 (3/4" NPT)