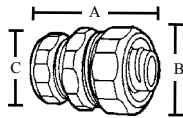
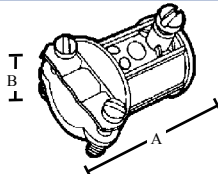


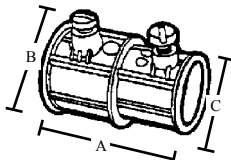
CAT#	A	B	C	D	SCREWS
391S	0.850	1.200	0.720	0.855	2
392S	1.000	1.310	0.940	1.065	2
393S	1.270	1.530	1.170	1.320	3



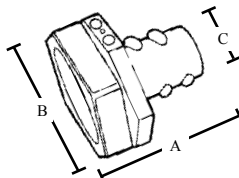
CAT#	A	B	C
271	1.64	1.39	1.09
272	1.75	1.72	1.30
273	2.00	1.75	1.50



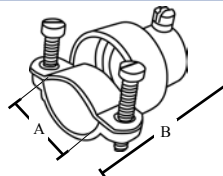
CAT#	A	B (Min)	B (Max)
180	1.35	0.17	0.63



CAT#	A	B	C
590	1.25	0.93	0.78



CAT#	A	B	C
131	1.660	1.000	.723
132	1.680	1.180	.931
133	1.895	1.625	1.070



CAT#	A (Min)	A (Max)	B
181	.75	.95	1.65
182	.75	1.20	1.93
182A	.75	1.40	2.00

COMBINATION COUPLINGS

TOPAZ CAT #	UPC#	SIZE	UNIT CTN	SHIP CASE	STEEL WT/CASE
EMT TO RIGID					
• SET SCREW TYPE					
391S	70210	1/2" - 1/2"	25	250	33
392S	70220	3/4" - 3/4"	10	100	25
393S	70230	1" - 1"	10	100	33



E170258

EMT TO LIQUID TIGHT

TOPAZ CAT #	UPC#	SIZE	UNIT CTN	SHIP CASE	WT/CASE
• COMPRESSION TYPE					
• FOR USE WITH METALLIC & NON METALLIC CONDUIT					
271	12260	1/2" - 1/2"	25	250	20
272	12270	3/4" - 3/4"	20	200	14
273	12280	1" - 1"	10	100	16



1/2" - 3/4"-1"

E148716
E170258

EMT TO BX OR NM CABLE

TOPAZ CAT #	UPC#	SIZE	UNIT CTN	SHIP CASE	ZINC DIE CAST WT/CASE
• SET SCREW TO CLAMP TYPE					
180	11410	1/2" - 3/8"	50	500	40



E170258

EMT TO BX

TOPAZ CAT #	UPC#	SIZE	UNIT CTN	SHIP CASE	WT/CASE
• SET SCREW TYPE					
590	15780	1/2" - 3/8"	25	250	15



E170258

EMT COMPRESSION TO FLEX

TOPAZ CAT #	UPC#	SIZE	UNIT CTN	SHIP CASE	WT/CASE
• SCREW-IN TYPE					
131	10840	1/2" - 1/2"	50	500	40
132	10850	3/4" - 3/4"	25	250	28
133	10860	1" - 1"	25	250	58



E148716

EMT TO FLEX

TOPAZ CAT #	UPC#	SIZE	UNIT CTN	SHIP CASE	WT/CASE
• SET SCREW TO CLAMP TYPE					
181	11420	1/2" - 1/2"	25	250	25
182	11430	3/4" - 3/4"	—	100	15
182A	11431	1" - 1"	—	50	13

