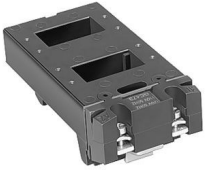


IEC Renewal Parts

Bulletin 100-B Line of Contactors



Used on Cat. Nos. 100-B110, B180, B250, and B300

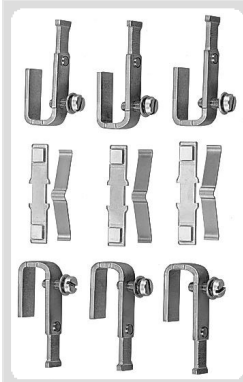
AC Operating Coils

For Use With	Frequency (Hz)	Voltage													
		24V	48V	110V	120V	208V	220V	240V	277V	380V	415V	440V	480V	500V	600V
		Part No.													
100-B110	50	GE407	—	GE473	—	—	GE474	GE442	—	GE454	GE457	GE475	—	GE464	—
	60	GE013	GE022	—	GE473	GE049	GE051	GE474	GE060	—	—	GE071	GE475	—	GE476
100-B180	50	GF407	—	GF473	—	—	GF474	GF442	—	GF454	GF457	GF475	—	GF464	—
	60	GF013	GF022	—	GF473	GF049	GF051	GF474	GF060	—	—	GF071	GF475	—	GF476
100-B250, 100-B300	50	—	—	GG473	—	—	GG474	GG442	—	GG454	GG457	GG475	—	GG464	—
	60	—	GG022	—	GG473	GG049	GG051	GG474	GG060	—	—	GG071	GG475	—	GG476
100-B400	50	—	—	GH473	—	—	GH474	100-B400NØ3	—	GH454	GH457	GH475	—	GH464	—
	60	—	—	—	GH473	GH049	GH051	GH474	GH060	—	—	GH071	GH475	—	GH476
100-B600	50	—	—	GJ473	—	—	GJ474	GJ442	—	GJ454	GJ457	GJ475	—	GJ464	—
	60	—	—	—	GJ473	GJ049	GJ051	GJ474	GJ060	—	—	GJ071	GJ475	—	GJ476

AC Operating Coils

Coil Type	For Use With	Voltage							
		12V	24V	48V	64V	80V	115V	230V	250V
		Part No.							
Pure DC	100-B110	NE708	NE714	NE724	NE727	NE729	NE734	NE749	NE751
Economized DC	100-B110	—	NE714F	NE724F	—	—	NE734F	NE749F	—
	100-B180	—	NF714F	NF724F	—	—	NF734F	NF749F	—

Bulletin 100 Line of Contactors



Contact Kits (Each Kit Provides Movable and Stationary Contacts for 3 Poles)

For Use With*	Contact Kit
	Part No.
100-B110	40780-800-01
100-B180	40781-800-01
100-B250	40782-800-01
100-B300	40782-801-01
100-B400	40783-801-01
100-B600	40783-802-01

Grey Cover Kits (Includes Cover Screws)

For Use With	Cover Kit Part No.	Pkg. Qty.	For Use With	Cover Kit Part No.	Pkg. Qty.
100-B110N \emptyset 3, 100-B110NZ \emptyset 3	40780-614-02	1	100-B300N \emptyset 3	40782-608-02	1
100-B180N \emptyset 3	40781-609-02	1	100-B400N \emptyset 3	40786-608-02	1
100-B250N \emptyset 3	40782-607-02	1	100-B600N \emptyset 3	40786-609-02	1

Lug Screws

For Use With	Lug Screw Cat. No.
100-B110	29108-049-33
100-B180	40781-028-07
100-B250, 100-B300	29108-501-33
100-B400, 100-B600	29108-505-09

Auxiliary Contact Adapter Block (Slider Block)

Amperes (A)	Cat. No.
400	40786-802-01
600	40786-802-02

* Contact Kits for Cat. No. 100-A09 through 100-A30 are not available as replacement parts.

Renewal Parts

Bulletin 100-M Replacement Coils*



Description	Pkg. Qty.	Cat. No.
24V 50/60 Hz	10	MA014
48V 50/60 Hz	10	MA024
220V 50/60 Hz	10	MA050
240V 50/60 Hz	10	MA052
440V 50 Hz/480V 60 Hz	10	MA082
12V DC	10	MB708
24V DC	10	MB714
60V DC	10	MB734
125V DC	10	MB746
24V DC with Diode Suppressor	10	MD714

* AC and DC coils are not interchangeable.

Bulletin 100-C Replacement Coils





AC Standard Control Voltages [V]			AC Coil Code	100-C09...100-C16	100-C23...100-C37, 100L-C20	100-C40, -C43, -C55	100-C60...100-C85	100-C90...100-C97
50 Hz	60 Hz	50/60 Hz		Cat. No.	Cat. No.	Cat. No.	Cat. No.	Cat. No.
–	12	–	Q	TA006	TC006	TD006	TE006	TF006
12	–	–	R	TA404	TC404	TD404	TE404	TF404
–	24	–	J	TA013	TC013	TD013	TE013	TF013
24	–	–	K	TA407	TC407	TD407	TE407	TF407
–	–	24	KJ	TA855	TC855	TD855	TE855	TF855
32	36	–	V	TA481	TC481	TD481	TE481	TF481
36	42	–	W	TA410	TC410	TD410	TE410	TF410
42	48	–	X	TA482	TC482	TD482	TE482	TF482
48	–	–	Y	TA414	TC414	TD414	TE414	TF414
–	–	48	KY	TA860	TC860	TD860	TE860	TF860
100	100...110	100	KP	TA861	TC861	TD861	TE861	TF861
110	120	–	D	TA473	TC473	TD473	TE473	TF473
–	–	110	KD	TA856	TC856	TD856	TE856	TF856
120	–	–	P	TA425	TC425	TD425	TE425	TF425
127	–	–	S	TA428	TC428	TD428	TE428	TF428
200	200...220	200	KG	TA862	TC862	TD862	TE862	TF862
–	208	–	H	TA049	TC049	TD049	TE049	TF049
200...220	208...240	–	L	TA296	TC296	TD296	TE296	TF296
–	–	200...230	KL	TA864	TC864	TD864	TE864	–
220	240	–	A	TA474	TC474	TD474	TE474	TF474
220...230	260	–	F	TA441	TC441	TD441	TE441	TF441
–	–	230	KF	TA851	TC851	TD851	TE851	TF851
230...240	–	–	VA	TA440	TC440	TD440	TE440	TF440
240	277	–	T	TA480	TC480	TD480	TE480	TF480
–	–	240	KA	TA858	TC858	TD858	TE858	TF858
–	347	–	I	TA065	TC065	TD065	TE065	TF065
–	380	–	E	TA067	TC067	TD067	TE067	TF067
380...400	440	–	N	TA071	TC071	TD071	TE071	TF071
–	–	400	KN	TA863	TC863	TD863	TE863	TF863
400...415	–	–	G	TA457	TC457	TD457	TE457	TF457
440	480	–	B	TA475	TC475	TD475	TE475	TF475
–	–	440	KB	TA859	TC859	TD859	TE859	TF859
500	–	–	M	TA479	TC479	TD479	TE479	TF479
550	600	–	C	TA476	TC476	TD476	TE476	TF476



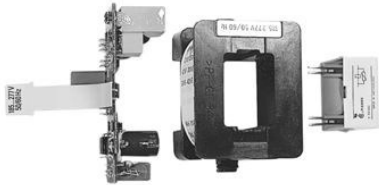
DC Standard Control Voltage [V]	DC Coil Code	100-C09...100-C16	100-C23...100-C37, 100L-C20	100-C40, -C43, -C55	100-C60...100-C85	100-C90...100-C97
		Cat. No.	Cat. No.	Cat. No.	Cat. No.	Cat. No.
9*	ZR	TA766	TC766	TD766	—	—
9V Diode*	DR	—	—	—	TE766M	TF766M
12	ZQ	TA708	TC708	TD708	—	—
12V Electronic	EQ	TC708E	TC708E	TD708E	—	—
12V Diode	DQ	—	—	—	TE708M	TF708M
24‡	ZJ	TA714	TC714	TD714	—	—
24V Electronic	EJ	TC714E	TC714E	TD714E	—	—
24 Diode‡	DJ	TA714M	TC714M	TD714M	TE714M	TF714M
36	ZW	TA719	TC719	TD719	—	—
36...48V Electronic	EW	TC719E	TC719E	TD719E	—	—
36V Diode	DW	—	—	—	TE719M	TF719M
48	ZY	TA724	TC724	TD724	—	—
48...72V Electronic	EY	TC724E	TC724E	TD724E	—	—
48V Diode	DY	—	—	—	TE724M	TF724M
60	ZZ	TA774	TC774	TD774	—	—
60V Diode	DZ	—	—	—	TE774M	TF774M
64	ZB	TA727	TC727	TD727	—	—
64V Diode	DB	—	—	—	TE727M	TF727M
72	ZG	TA728	TC728	TD728	—	—
72V Diode	DG	—	—	—	TE728M	TF728M
80	ZE	TA729	TC729	TD729	—	—
80V Diode	DE	—	—	—	TE729M	TF729M
110	ZD	TA733	TC733	TD733	—	—
110...125V Electronic	ED	TC733E	TC733E	TD733E	—	—
110V Diode	DD	—	—	—	TE733M	TF733M
115	ZP	TA734	TC734	TD734	—	—
115V Diode	DP	—	—	—	TE734M	TF734M
125	ZS	TA737	TC737	TD737	—	—
125V Diode	DS	—	—	—	TE737M	TF737M
220	ZA	TA747	TC747	TD747	—	—
220...250V Electronic	EA	TC747E	TC747E	TD747E	—	—
220V Diode	DA	—	—	—	TE747M	TF747M
230	ZF	TA749	TC749	TD749	—	—
230V Diode	DF	—	—	—	TE749F	TF749F
250	ZT	TA751	TC751	TD751	—	—
250V Diode	DT	—	—	—	TE751F	TF751F

* Voltage operating range: 0.65...1.3 x Us.

‡ Voltage operating range: 0.7...1.25 x Us.

	Description	Coil Type	For Use With	Cat. No.
	Arc Chambers for Contactors For 3-pole 100-D Contactors	Conventional	100-D115	100-DA-115
			100-D180	100-DA-180
		Electronic	100-D115	100-DAE-115
			100-D140	100-DAE-140
			100-D180	100-DAE-180
			100-D210	100-DAE-210
			100-D250	100-DAE-250
			100-D300	100-DAE-300
	Main Contacts for Contactors 3 complete sets for 3-pole 100-D Contactors	Conventional	100-D115	100-DC-115
			100-D140	100-DC-140
			100-D180	100-DC-180
		Electronic	100-D115	100-DCE-115
			100-D140	100-DCE-140
			100-D180	100-DCE-180
			100-D210	100-DCE-210
			100-D250	100-DCE-250
			100-D300	100-DCE-300
			100-D420	100-DCE-420
			100-D630	100-DCE-630
100-D860	100-DCE-860			
	Terminal Hardware Set of 6	Conventional	100-D115...D180	100-DHF180
		Electronic	100-D115E...D180	100-DHF180
			100-D210...D420	100-DHF420
			100-D630...D860	100-DHF860

Bulletin 100-D Replacement coils




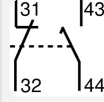


Conventional AC							Conventional DC				
AC Standard Control Voltages			AC Coil Code	100-D95... D180	100-D210... D420	100-D630... D860	DC Standard Control Voltages	DC Coil Code	100-D95... D180	100-D210... D420	100-D630... D860
50 Hz	60 Hz	50/60 Hz		Cat. No.	Cat. No.	Cat. No.			Cat. No.	Cat. No.	Cat. No.
24V	—	—	K	TG407	—	—	24V	ZJ	TG714	—	—
—	24V	—	J	TG013	—	—	48V	ZY	TG724	—	—
48V	—	—	Y	TG414	—	—	110V	ZD	TG733	—	—
42V	48V	—	X	TG482	—	—	125V	ZS	TG737	—	—
—	—	100V*	KP	TG861	—	—	220V	ZA	TG761	—	—
110V	120V	—	D	TG473	—	—					
—	—	110V*	KN	TG856	—	—					
—	208V	—	H	TG049	—	—					
—	—	200V*	KG	TG862	—	—					
—	—	220V*	KL	TG857	—	—					
220... 230V	240V	—	A	TG441	—	—					
240V	277V	—	T	TG480	—	—					
—	—	277V*	KT	TG060	—	—					
—	—	230V*	KF	TG851	—	—					
—	—	240V*	KA	TG858	—	—					
380... 400V	440V	—	N	TG071	—	—					
415V	480V	—	B	TG475	—	—					
440V	—	—	G	TG478	—	—					
500V	—	—	M	TG479	—	—					
550V	600V	—	C	TG476	—	—					
Electronic AC							Electronic DC				
AC Standard Control Voltages			AC Coil Code	100-D95... D300	100-D420	100-D630... D860	DC Standard Control Voltage	DC Coil Code	100-D95... D300	100-D420	100-D630... D860
50 Hz	60 Hz	50/60 Hz		Cat. No.	Cat. No.	Cat. No.			Cat. No.	Cat. No.	Cat. No.
—	—	24V	EJ‡	TGE855	—	—	24V	EZJ	TGE708	—	—
—	—	42...64V	EY	TGE864	—	—	48...72V	EZY	TGE779	—	—
—	—	100V	EP	TGE861	THE861	TJE861	110...130V	EZD	TGE780	THE780	—
—	—	110... 130V	ED	TGE865	THE865	TJE865		ED	—	—	TJE865
—	—	200V	EG	TGE862	THE862	—	200...255V	EZA	TGE781	THE781	—
—	—	208... 277V	EA	TGE866	THE866	—		EA	—	—	TJE879
—	—	200... 220V	EG	—	—	TJE878					
—	—	230... 250V	EA	—	—	TJE879					
—	—	380... 500V	EN	TGE867	THE867	—					
—	—	380... 415V	EN	—	—	TJE867					
—	—	440... 480V	EB	—	—	TJE868					
—	—	500V	EM	—	—	TJE869					

* Applies to 100-D95...-D115 contactors only. Not available with 100-D140...-D180 contactors.

‡ Not available on 100/104-D300.

Bulletin 100-G Renewal Parts

	Description	For Use With	Cat. No.
	Arcing Chamber For 3 poles	100-G550	100-AC550
		100-G700, 100-G860	100-AC860
	Main Contact Set Set for 1 pole	100-G550	100-CP550
		100-G700	100-CP700
		100-G860	100-CP860
		100-G1000	100-CP1000
		100-G1200	100-CP1200
	Auxiliary Contact Block Special 2-pole design: 1 N.O. delayed make, 1 N.C. contact N.O. delayed make contact used for operation of the Feeder/Group Coil mechanism One contact block supplied standard with contactor		100-G1000, 100-G1200 100-EB11DC

Coils and Supply Modules



AC Standard Control Voltages	DC Standard Control Voltage	Coil Code	100-G550	100-G700...100-G860			
50/60 Hz							
110...120V	100...110V	KD	TX734	TXS734	TY734	TYS734	
220...240V	200...220V	KF	TX747	TXS747	TY747	TYS747	
380...415V	345...380V	KN	TX779	TXS779	TY779	TYS779	
440...480V	400...440V	KB	TX780	TXS780	TY780	TYS780	

* Coils sold in pairs.

AC Standard Control Voltages	Coil Code	100-G1000...100-G1200	
		Coil Cat. No.*	Supply Module Cat. No.
50/60 Hz			
110...115V	KD	TZ734	TZS734
220...230V	KF	TZ747	TZS747
380...400V	KN	TZ779	TZS779
440V	KB	TZ780	TZS780