

WIRING INSTRUCTIONS

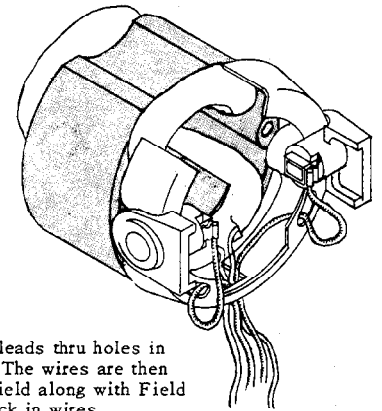
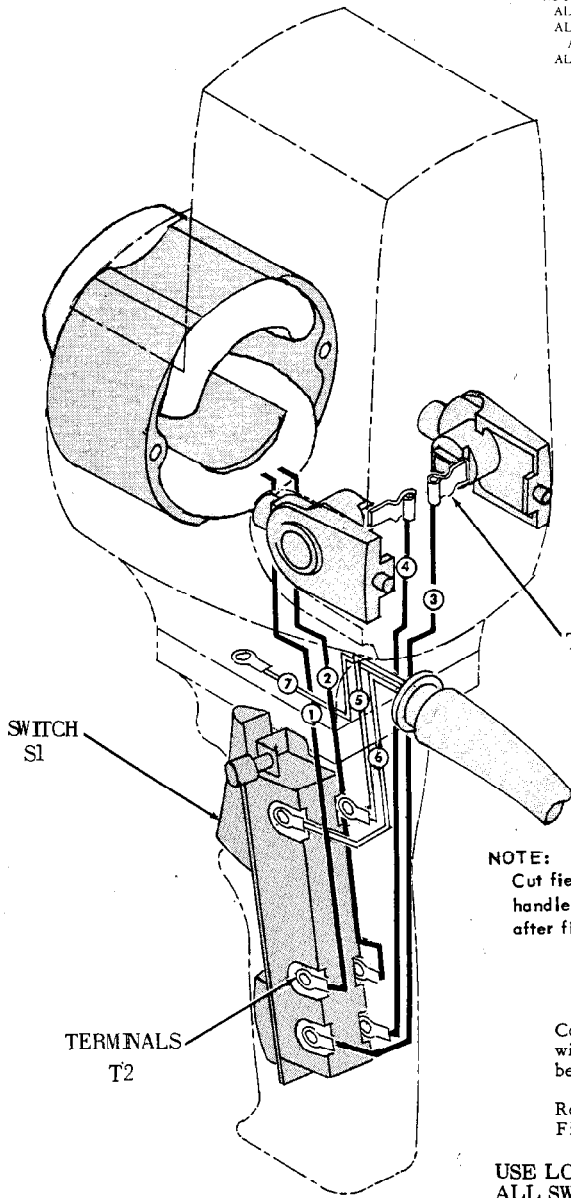
TITLE 1675-1 HOLE HAWG

BULLETIN
58-01-0620

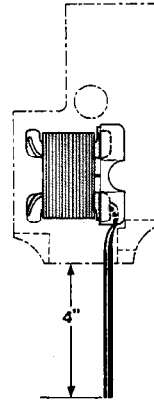
MILWAUKEE ELECTRIC TOOL CORP. 13135 WEST LISBON RD. BROOKFIELD, WIS.

Date
June '70

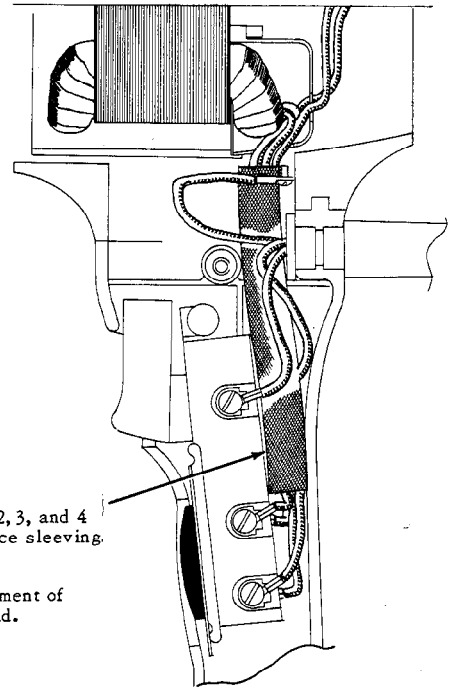
NOTE:
ALL LEADS MUST BE HELD TO $\pm 1/8"$
ALL FIELD LEADS TO BE MEASURED FROM
AND PERPENDICULAR TO LAMINATIONS.
ALL LEAD LENGTHS ARE BEFORE STRIPPING.



Important: Run both Brushholder leads thru holes in flange of coil shield. (See Dwg.) The wires are then dressed down thru slot in coil shield along with Field wires. Be sure to remove any slack in wires.



NOTE:
Cut field leads to 4" from handle mounting surface after field is installed.



Cover Field And Brushholder Wires No. 1, 2, 3, and 4 with insulating sleeve No. 23-48-0100. Place sleeving between cord set leads as shown.

Refer to detail dwg. above for proper placement of Field and Brushholder wires thru coil shield.

USE LOCK WASHERS UNDER ALL SWITCH TERMINALS.

Where Terminal And Connector Combinations are Specified See Electrical Parts Charts For Part No. And Quantity. See Drawing For Actual Hook-up.

WIRING SPECIFICATIONS

Wire Color	Wire No.	Ga.	Lgth in.	Terminal				Connector				Wire Color	Wire No.	Ga.	Lgth in.	Terminal				Connector																
				T1	T2	T3	T4	C1	C2	C3	C4					T1	T2	T3	T4	C1	C2	C3	C4													
Yellow	1	Fld.	5-1/2	X													X																			
Black	2	Fld.	5-1/2	X													X																			
Red	3	16	8-1/4	X	X																															
White	4	16	8-1/4	X	X																															
White	5	Cord	2-3/8	X																																

Electrical Parts

TERMINAL DESCRIPTION		
Code	Part No.	Qty.
T1	22-44-0090	2
T2	23-74-0050	7
CONNECTOR DESCRIPTION		
Code	Part No.	Qty.
SWITCH DESCRIPTION		
Code	Part No.	Qty.
S1	23-66-0750	1