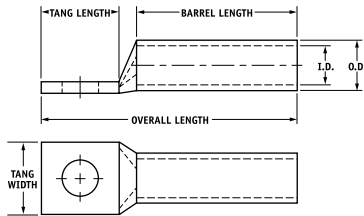


### TYPE CLWS

#### Features

- Manufactured from high strength seamless copper tubing.
- Electro-Tin plated.
- Maximum conductivity and excellent crimping characteristics.
- Long barrel length with chamfered entry.
- Color coded.
- UL 486A 90°C Listed and CSA Certified for 600 Volts.
- If proper high voltage spacing and insulation techniques are used, may be used for high voltage applications up to 35KV.
- For Copper conductor only.
- IlSCO connectors are UL Listed and CSA Certified with ILSCO or other Manufacturers' tools.
- UL File E6207



Catalog Number	Wire Size	Alt Wire Size	Expanded* Wire Range	Bolt Size	Stud Hole Dia.	Tang Length	Tang Width	Barrel Length	Overall Length	Die Color Code	Die Index	Die Catalog Number	O.D.	I.D.
CLWS-8-10	#8 AWG	#8 FLEX	-	10	0.219	0.562	0.374	0.812	1.569	Red	I-21	ILD-21	0.272	0.179
+CLWS-8-14	#8 AWG	#8 FLEX	-	1/4	0.281	0.680	0.486	0.812	1.687	Red	I-21	ILD-21	0.272	0.179
+CLWS-8-516	#8 AWG	#8 FLEX	-	5/16	0.343	0.875	0.532	0.812	1.882	Red	I-21	ILD-21	0.272	0.179
+CLWS-8-38	#8 AWG	#8 FLEX	-	3/8	0.406	0.875	0.593	0.812	1.882	Red	I-21	ILD-21	0.272	0.179
CLWS-6-10	#6 AWG	-	-	10	0.219	0.562	0.411	1.125	1.882	Blue	I-24	ILD-24	0.295	0.203
CLWS-6-14	#6 AWG	-	-	1/4	0.281	0.680	0.411	1.125	2.000	Blue	I-24	ILD-24	0.295	0.203
+CLWS-6-516	#6 AWG	-	-	5/16	0.343	0.875	0.532	1.125	2.195	Blue	I-24	ILD-24	0.295	0.203
+CLWS-6-38	#6 AWG	-	-	3/8	0.406	0.875	0.593	1.125	2.195	Blue	I-24	ILD-24	0.295	0.203
+CLWS-6-12	#6 AWG	-	-	1/2	0.562	1.250	0.750	1.125	2.570	Blue	I-24	ILD-24	0.295	0.203
+CLWS-6-34	#6 AWG	-	-	3/4	0.781	1.687	0.411	1.125	3.007	Blue	I-24	ILD-24	0.295	0.203
CLWS-4-10	#4 AWG	#6 FLEX	4-6 AWG	10	0.219	0.562	0.486	1.125	1.921	Gray	I-29	ILD-29	0.343	0.250
CLWS-4-14	#4 AWG	#6 FLEX	4-6 AWG	1/4	0.281	0.680	0.486	1.125	2.039	Gray	I-29	ILD-29	0.343	0.250
CLWS-4-516	#4 AWG	#6 FLEX	4-6 AWG	5/16	0.343	0.875	0.486	1.125	2.234	Gray	I-29	ILD-29	0.343	0.250
+CLWS-4-38	#4 AWG	#6 FLEX	4-6 AWG	3/8	0.406	0.875	0.593	1.125	2.234	Gray	I-29	ILD-29	0.343	0.250
+CLWS-4-12	#4 AWG	#6 FLEX	4-6 AWG	1/2	0.562	1.250	0.750	1.125	2.609	Gray	I-29	ILD-29	0.343	0.250
CLWS-3-10	#3 AWG	#4 FLEX	3-6 AWG	10	0.219	0.562	0.532	1.125	1.942	White	I-29	ILD-29	0.375	0.275
CLWS-3-14	#3 AWG	#4 FLEX	3-6 AWG	1/4	0.281	0.680	0.532	1.125	2.060	White	I-29	ILD-29	0.375	0.275
CLWS-3-516	#3 AWG	#4 FLEX	3-6 AWG	5/16	0.343	0.875	0.532	1.125	2.255	White	I-29	ILD-29	0.375	0.275
+CLWS-3-38	#3 AWG	#4 FLEX	3-6 AWG	3/8	0.406	0.875	0.593	1.125	2.255	White	I-29	ILD-29	0.375	0.275
+CLWS-3-12	#3 AWG	#4 FLEX	3-6 AWG	1/2	0.562	1.250	0.750	1.125	2.630	White	I-29	ILD-29	0.375	0.275
CLWS-2-10	#2 AWG	-	2-6 AWG	10	0.219	0.562	0.599	1.125	1.973	Brown	I-33	ILD-33	0.421	0.312
CLWS-2-14	#2 AWG	-	2-6 AWG	1/4	0.281	0.680	0.599	1.125	2.091	Brown	I-33	ILD-33	0.421	0.312
CLWS-2-516	#2 AWG	-	2-6 AWG	5/16	0.343	0.875	0.599	1.125	2.286	Brown	I-33	ILD-33	0.421	0.312
CLWS-2-38	#2 AWG	-	2-6 AWG	3/8	0.406	0.875	0.599	1.125	2.286	Brown	I-33	ILD-33	0.421	0.312
+CLWS-2-12	#2 AWG	-	2-6 AWG	1/2	0.562	1.250	0.750	1.125	2.661	Brown	I-33	ILD-33	0.421	0.312

+ Available 3rd quarter 2008

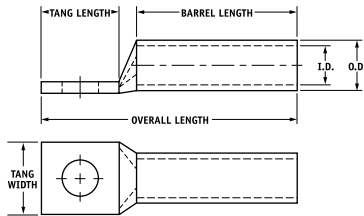
\* When installed with specified dieless tools

See pages 34 to 39 for complete tooling information.

### TYPE CLWS

#### Features

- Manufactured from high strength seamless copper tubing.
- Electro-Tin plated.
- Maximum conductivity and excellent crimping characteristics.
- Long barrel length with chamfered entry.
- Color coded.
- UL 486A 90°C Listed and CSA Certified for 600 Volts.
- If proper high voltage spacing and insulation techniques are used, may be used for high voltage applications up to 35KV.
- For Copper conductor only.
- IlSCO connectors are UL Listed and CSA Certified with ILSCO or other Manufacturers' tools.
- UL File E6207



Catalog Number	Wire Size	Alt Wire Size	Expanded* Wire Range	Bolt Size	Stud Hole Dia.	Tang Length	Tang Width	Barrel Length	Overall Length	Die Color Code	Die Index	Die Catalog Number	O.D.	I.D.
CLWS-1-10	#1 AWG	#2 FLEX	1-6 AWG	10	0.219	0.562	0.673	1.375	2.267	Green	1-37	ILD-37	0.468	0.359
CLWS-1-14	#1 AWG	#2 FLEX	1-6 AWG	1/4	0.281	0.875	0.673	1.375	2.580	Green	1-37	ILD-37	0.468	0.359
CLWS-1-516	#1 AWG	#2 FLEX	1-6 AWG	5/16	0.343	0.875	0.673	1.375	2.580	Green	1-37	ILD-37	0.468	0.359
CLWS-1-38	#1 AWG	#2 FLEX	1-6 AWG	3/8	0.406	0.875	0.673	1.375	2.580	Green	1-37	ILD-37	0.468	0.359
+ CLWS-1-12	#1 AWG	#2 FLEX	1-6 AWG	1/2	0.562	1.250	0.750	1.375	2.955	Green	1-37	ILD-37	0.468	0.359
CLWS-1/0-10	1/0 AWG	#1 FLEX	1/0-6 AWG	10	0.219	0.562	0.738	1.500	2.418	Pink	1-42	ILD-42	0.515	0.390
CLWS-1/0-14	1/0 AWG	#1 FLEX	1/0-6 AWG	1/4	0.281	0.875	0.738	1.500	2.731	Pink	1-42	ILD-42	0.515	0.390
CLWS-1/0-516	1/0 AWG	#1 FLEX	1/0-6 AWG	5/16	0.343	0.875	0.738	1.500	2.731	Pink	1-42	ILD-42	0.515	0.390
CLWS-1/0-38	1/0 AWG	#1 FLEX	1/0-6 AWG	3/8	0.406	0.875	0.738	1.500	2.731	Pink	1-42	ILD-42	0.515	0.390
CLWS-1/0-12	1/0 AWG	#1 FLEX	1/0-6 AWG	1/2	0.562	1.250	0.738	1.500	3.106	Pink	1-42	ILD-42	0.515	0.390
CLWS-2/0-10	2/0 AWG	1/0 FLEX	2/0-4 AWG	10	0.219	0.562	0.811	1.500	2.458	Black	1-45	ILD-45	0.562	0.437
CLWS-2/0-14	2/0 AWG	1/0 FLEX	2/0-4 AWG	1/4	0.281	0.875	0.811	1.500	2.771	Black	1-45	ILD-45	0.562	0.437
CLWS-2/0-516	2/0 AWG	1/0 FLEX	2/0-4 AWG	5/16	0.343	0.875	0.811	1.500	2.771	Black	1-45	ILD-45	0.562	0.437
CLWS-2/0-38	2/0 AWG	1/0 FLEX	2/0-4 AWG	3/8	0.406	0.875	0.811	1.500	2.771	Black	1-45	ILD-45	0.562	0.437
CLWS-2/0-12	2/0 AWG	1/0 FLEX	2/0-4 AWG	1/2	0.562	1.250	0.811	1.500	3.146	Black	1-45	ILD-45	0.562	0.437
CLWS-3/0-10	3/0 AWG	2/0 FLEX	3/0-2 AWG	10	0.219	0.562	0.885	1.500	2.501	Orange	1-50	ILD-50	0.609	0.484
CLWS-3/0-14	3/0 AWG	2/0 FLEX	3/0-2 AWG	1/4	0.281	0.875	0.885	1.500	2.814	Orange	1-50	ILD-50	0.609	0.484
CLWS-3/0-516	3/0 AWG	2/0 FLEX	3/0-2 AWG	5/16	0.343	0.875	0.885	1.500	2.814	Orange	1-50	ILD-50	0.609	0.484
CLWS-3/0-38	3/0 AWG	2/0 FLEX	3/0-2 AWG	3/8	0.406	0.875	0.885	1.500	2.814	Orange	1-50	ILD-50	0.609	0.484
CLWS-3/0-12	3/0 AWG	2/0 FLEX	3/0-2 AWG	1/2	0.562	1.250	0.885	1.500	3.189	Orange	1-50	ILD-50	0.609	0.484
CLWS-4/0-14	4/0 AWG	3/0 FLEX	4/0-1 AWG	1/4	0.281	0.875	0.999	1.500	2.866	Purple	1-54	ILD-54	0.687	0.546
CLWS-4/0-516	4/0 AWG	3/0 FLEX	4/0-1 AWG	5/16	0.343	0.875	0.999	1.500	2.866	Purple	1-54	ILD-54	0.687	0.546
CLWS-4/0-38	4/0 AWG	3/0 FLEX	4/0-1 AWG	3/8	0.406	0.875	0.999	1.500	2.866	Purple	1-54	ILD-54	0.687	0.546
CLWS-4/0-12	4/0 AWG	3/0 FLEX	4/0-1 AWG	1/2	0.562	1.250	0.999	1.500	3.241	Purple	1-54	ILD-54	0.687	0.546
CLWS-250-516	250kcmil	4/0 FLEX	250kcmil - 1/0 AWG	5/16	0.343	0.875	1.088	1.688	3.094	Yellow	1-62	ILD-62	0.750	0.593
CLWS-250-38	250kcmil	4/0 FLEX	250kcmil - 1/0 AWG	3/8	0.406	0.875	1.088	1.688	3.094	Yellow	1-62	ILD-62	0.750	0.593
CLWS-250-12	250kcmil	4/0 FLEX	250kcmil - 1/0 AWG	1/2	0.562	1.250	1.088	1.688	3.469	Yellow	1-62	ILD-62	0.750	0.593
CLWS-300-516	300kcmil	250 G,H FLEX	300kcmil - 2/0 AWG	5/16	0.343	0.875	1.189	2.000	3.462	White	1-66	ILD-66	0.812	0.660
CLWS-300-38	300kcmil	250 G,H FLEX	300kcmil - 2/0 AWG	3/8	0.406	0.875	1.189	2.000	3.462	White	1-66	ILD-66	0.812	0.660
CLWS-300-12	300kcmil	250 G,H FLEX	300kcmil - 2/0 AWG	1/2	0.562	1.250	1.189	2.000	3.837	White	1-66	ILD-66	0.812	0.660

+ Available 3rd quarter 2008

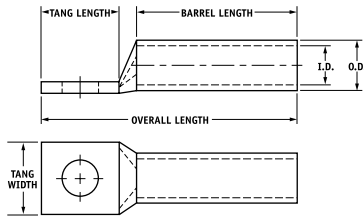
\* When installed with specified dieless tools

See pages 34 to 39 for complete tooling information.

### TYPE CLWS

#### Features

- Manufactured from high strength seamless copper tubing.
- Electro-Tin plated.
- Maximum conductivity and excellent crimping characteristics.
- Long barrel length with chamfered entry.
- Color coded.
- UL 486A 90°C Listed and CSA Certified for 600 Volts.
- If proper high voltage spacing and insulation techniques are used, may be used for high voltage applications up to 35KV.
- For Copper conductor only.
- IlSCO connectors are UL Listed and CSA Certified with ILSCO or other Manufacturers' tools.
- UL File E6207



Catalog Number	Wire Size	Alt Wire Size	Expanded* Wire Range	Bolt Size	Stud Hole Dia.	Tang Length	Tang Width	Barrel Length	Overall Length	Die Color Code	Die Index	Die Catalog Number	O.D.	I.D.
CLWS-350-38	350kcmil	250 I,K,M FLEX 262.2 DLO	350kcmil - 3/0 AWG	3/8	0.406	0.875	1.291	2.000	3.498	Red	I-71	ILD-71	0.890	0.703
CLWS-350-12	350kcmil	250 I,K,M FLEX 262.2 DLO	350kcmil - 3/0 AWG	1/2	0.562	1.250	1.291	2.000	3.873	Red	I-71	ILD-71	0.890	0.703
CLWS-350-58	350kcmil	250 I,K,M FLEX 262.2 DLO	350kcmil - 3/0 AWG	5/8	0.656	1.437	1.291	2.000	4.060	Red	I-71	ILD-71	0.890	0.703
CLWS-400-38	400kcmil	300 G,H,I,K,M FLEX 313.1 DLO	400kcmil - 4/0 AWG	3/8	0.406	0.875	1.365	2.125	3.667	Blue	I-76	ILD-76	0.937	0.750
CLWS-400-12	400kcmil	300 G,H,I,K,M FLEX 313.1 DLO	400kcmil - 4/0 AWG	1/2	0.562	1.250	1.365	2.125	4.042	Blue	I-76	ILD-76	0.937	0.750
CLWS-400-58	400kcmil	300 G,H,I,K,M FLEX 313.1 DLO	400kcmil - 4/0 AWG	5/8	0.656	1.437	1.365	2.125	4.229	Blue	I-76	ILD-76	0.937	0.750
CLWS-500-38	500kcmil	350 G,H,I,K,M FLEX 373.7 DLO	500kcmil - 250kcmil	3/8	0.406	0.875	1.535	2.250	3.857	Brown	I-87	ILD-87	1.062	0.828
CLWS-500-12	500kcmil	350 G,H,I,K,M FLEX 373.7 DLO	500kcmil - 250kcmil	1/2	0.562	1.250	1.535	2.250	4.232	Brown	I-87	ILD-87	1.062	0.828
CLWS-500-58	500kcmil	350 G,H,I,K,M FLEX 373.7 DLO	500kcmil - 250kcmil	5/8	0.656	1.437	1.535	2.250	4.419	Brown	I-87	ILD-87	1.062	0.828
CLWS-600-38	600kcmil	400 G,H,I,K,M FLEX 444.4 DLO	600kcmil - 250kcmil	3/8	0.406	0.875	1.712	2.687	4.371	Green	I-94	ILD-94	1.187	0.920
CLWS-600-12	600kcmil	400 G,H,I,K,M FLEX 444.4 DLO	600kcmil - 250kcmil	1/2	0.562	1.250	1.712	2.687	4.746	Green	I-94	ILD-94	1.187	0.920
CLWS-600-58	600kcmil	400 G,H,I,K,M FLEX 444.4 DLO	600kcmil - 250kcmil	5/8	0.656	1.437	1.712	2.687	4.933	Green	I-94	ILD-94	1.187	0.920
CLWS-700-38	700kcmil	500 G,H,I,K,M FLEX 535.3 DLO	700kcmil - 350kcmil	3/8	0.406	0.875	1.816	2.687	4.431	Pink	I-99	ILD-99	1.250	0.991
CLWS-700-12	700kcmil	500 G,H,I,K,M FLEX 535.3 DLO	700kcmil - 350kcmil	1/2	0.562	1.250	1.816	2.687	4.806	Pink	I-99	ILD-99	1.250	0.991
CLWS-700-58	700kcmil	500 G,H,I,K,M FLEX 535.3 DLO	700kcmil - 350kcmil	5/8	0.656	1.437	1.816	2.687	4.993	Pink	I-99	ILD-99	1.250	0.991
CLWS-750-38	750kcmil	600 G,H,I,K,M FLEX 646.4 DLO	750kcmil - 500kcmil	3/8	0.406	0.875	1.901	2.875	4.652	Black	I-106	ILD-106	1.313	1.031
CLWS-750-12	750kcmil	600 G,H,I,K,M FLEX 646.4 DLO	750kcmil - 500kcmil	1/2	0.562	1.250	1.901	2.875	5.027	Black	I-106	ILD-106	1.313	1.031
CLWS-750-58	750kcmil	600 G,H,I,K,M FLEX 646.4 DLO	750kcmil - 500kcmil	5/8	0.656	1.437	1.901	2.875	5.214	Black	I-106	ILD-106	1.313	1.031
CLWS-1000-38	1000kcmil	750 G,H,I FLEX 777.7 DLO	1000kcmil - 750kcmil	3/8	0.406	0.875	2.169	3.000	4.900	White	I-125	ILD-125	1.500	1.172
CLWS-1000-12	1000kcmil	750 G,H,I FLEX 777.7 DLO	1000kcmil - 750kcmil	1/2	0.562	1.250	2.169	3.000	5.275	White	I-125	ILD-125	1.500	1.172
CLWS-1000-58	1000kcmil	750 G,H,I FLEX 777.7 DLO	1000kcmil - 750kcmil	5/8	0.656	1.437	2.169	3.000	5.462	White	I-125	ILD-125	1.500	1.172

\* When installed with specified dieless tools

See pages 34 to 39 for complete tooling information.