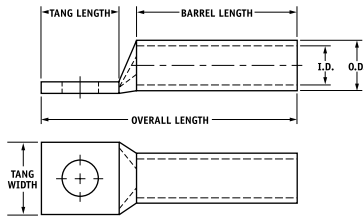


TYPE CSWS

Features

- Manufactured from high strength seamless copper tubing.
- Electro-Tin plated.
- Maximum conductivity and excellent crimping characteristics.
- Chamfered entry.
- Color coded.
- UL 486A 90°C Listed and CSA Certified for 600 Volts.
- If proper high voltage spacing and insulation techniques are used, may be used for high voltage applications up to 35KV.
- For Copper conductor only.
- IlSCO connectors are UL Listed and CSA Certified with ILSCO or other Manufacturers' tools.
- UL File E6207



Catalog Number	Wire Size	Alt Wire Size	Expanded* Wire Range	Bolt Size	Stud Hole Dia.	Tang Length	Tang Width	Barrel Length	Overall Length	Die Color Code	Die Index	Die Catalog Number	O.D.	I.D.
CSWS-8-10	#8 AWG	#8 FLEX	-	10	0.219	0.562	0.374	0.500	1.257	Red	I-21	ILD-21	0.272	0.179
+ CSWS-8-14	#8 AWG	#8 FLEX	-	1/4	0.281	0.680	0.486	0.500	1.375	Red	I-21	ILD-21	0.272	0.179
+ CSWS-8-516	#8 AWG	#8 FLEX	-	5/16	0.343	0.875	0.532	0.500	1.570	Red	I-21	ILD-21	0.272	0.179
+ CSWS-8-38	#8 AWG	#8 FLEX	-	3/8	0.406	0.875	0.593	0.500	1.570	Red	I-21	ILD-21	0.272	0.179
CSWS-6-10	#6 AWG	-	-	10	0.219	0.562	0.411	0.500	1.257	Blue	I-24	ILD-24	0.295	0.203
CSWS-6-14	#6 AWG	-	-	1/4	0.281	0.680	0.411	0.500	1.375	Blue	I-24	ILD-24	0.295	0.203
+ CSWS-6-516	#6 AWG	-	-	5/16	0.343	0.875	0.532	0.500	1.570	Blue	I-24	ILD-24	0.295	0.203
+ CSWS-6-38	#6 AWG	-	-	3/8	0.406	0.875	0.593	0.500	1.570	Blue	I-24	ILD-24	0.295	0.203
+ CSWS-6-12	#6 AWG	-	-	1/2	0.562	1.250	0.750	0.500	1.945	Blue	I-24	ILD-24	0.295	0.203
+ CSWS-6-34	#6 AWG	-	-	3/4	0.781	1.687	0.411	0.500	2.382	Blue	I-24	ILD-24	0.295	0.203
CSWS-4-10	#4 AWG	#6 FLEX	4-6 AWG	10	0.219	0.562	0.486	0.500	1.296	Gray	I-29	ILD-29	0.343	0.250
CSWS-4-14	#4 AWG	#6 FLEX	4-6 AWG	1/4	0.281	0.680	0.486	0.500	1.414	Gray	I-29	ILD-29	0.343	0.250
CSWS-4-516	#4 AWG	#6 FLEX	4-6 AWG	5/16	0.343	0.875	0.486	0.500	1.609	Gray	I-29	ILD-29	0.343	0.250
+ CSWS-4-38	#4 AWG	#6 FLEX	4-6 AWG	3/8	0.406	0.875	0.593	0.500	1.609	Gray	I-29	ILD-29	0.343	0.250
+ CSWS-4-12	#4 AWG	#6 FLEX	4-6 AWG	1/2	0.562	1.250	0.750	0.500	1.984	Gray	I-29	ILD-29	0.343	0.250
CSWS-3-10	#3 AWG	#4 FLEX	3-6 AWG	10	0.219	0.562	0.532	0.625	1.442	White	I-29	ILD-29	0.375	0.275
CSWS-3-14	#3 AWG	#4 FLEX	3-6 AWG	1/4	0.281	0.680	0.532	0.625	1.560	White	I-29	ILD-29	0.375	0.275
CSWS-3-516	#3 AWG	#4 FLEX	3-6 AWG	5/16	0.343	0.875	0.532	0.625	1.755	White	I-29	ILD-29	0.375	0.275
+ CSWS-3-38	#3 AWG	#4 FLEX	3-6 AWG	3/8	0.406	0.875	0.593	0.625	1.755	White	I-29	ILD-29	0.375	0.275
+ CSWS-3-12	#3 AWG	#4 FLEX	3-6 AWG	1/2	0.562	1.250	0.750	0.625	2.130	White	I-29	ILD-29	0.375	0.275
CSWS-2-10	#2 AWG	-	2-6 AWG	10	0.219	0.562	0.599	0.625	1.473	Brown	I-33	ILD-33	0.421	0.312
CSWS-2-14	#2 AWG	-	2-6 AWG	1/4	0.281	0.680	0.599	0.625	1.591	Brown	I-33	ILD-33	0.421	0.312
CSWS-2-516	#2 AWG	-	2-6 AWG	5/16	0.343	0.875	0.599	0.625	1.786	Brown	I-33	ILD-33	0.421	0.312
CSWS-2-38	#2 AWG	-	2-6 AWG	3/8	0.406	0.875	0.599	0.625	1.786	Brown	I-33	ILD-33	0.421	0.312
+ CSWS-2-12	#2 AWG	-	2-6 AWG	1/2	0.562	1.250	0.750	0.625	2.161	Brown	I-33	ILD-33	0.421	0.312

+ Available 3rd quarter 2008

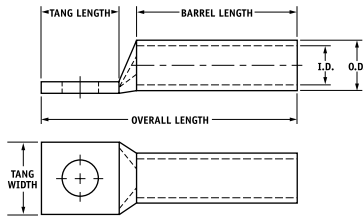
* When installed with specified dieless tools

See pages 34 to 39 for complete tooling information.

TYPE CSWS

Features

- Manufactured from high strength seamless copper tubing.
- Electro-Tin plated.
- Maximum conductivity and excellent crimping characteristics.
- Chamfered entry.
- Color coded.
- UL 486A 90°C Listed and CSA Certified for 600 Volts.
- If proper high voltage spacing and insulation techniques are used, may be used for high voltage applications up to 35KV.
- For Copper conductor only.
- IlSCO connectors are UL Listed and CSA Certified with ILSCO or other Manufacturers' tools.
- UL File E6207



Catalog Number	Wire Size	Alt Wire Size	Expanded* Wire Range	Bolt Size	Stud Hole Dia.	Tang Length	Tang Width	Barrel Length	Overall Length	Die Color Code	Die Index	Die Catalog Number	O.D.	I.D.
CSWS-1-10	#1 AWG	#2 FLEX	1-6 AWG	10	0.219	0.562	0.673	0.625	1.517	Green	I-37	ILD-37	0.468	0.359
CSWS-1-14	#1 AWG	#2 FLEX	1-6 AWG	1/4	0.281	0.875	0.673	0.625	1.830	Green	I-37	ILD-37	0.468	0.359
CSWS-1-516	#1 AWG	#2 FLEX	1-6 AWG	5/16	0.343	0.875	0.673	0.625	1.830	Green	I-37	ILD-37	0.468	0.359
CSWS-1-38	#1 AWG	#2 FLEX	1-6 AWG	3/8	0.406	0.875	0.673	0.625	1.830	Green	I-37	ILD-37	0.468	0.359
+ CSWS-1-12	#1 AWG	#2 FLEX	1-6 AWG	1/2	0.562	1.250	0.750	0.625	2.205	Green	I-37	ILD-37	0.468	0.359
CSWS-1/0-10	1/0 AWG	#1 FLEX	1/0-6 AWG	10	0.219	0.562	0.738	0.750	1.668	Pink	I-42	ILD-42	0.515	0.390
CSWS-1/0-14	1/0 AWG	#1 FLEX	1/0-6 AWG	1/4	0.281	0.875	0.738	0.750	1.981	Pink	I-42	ILD-42	0.515	0.390
CSWS-1/0-516	1/0 AWG	#1 FLEX	1/0-6 AWG	5/16	0.343	0.875	0.738	0.750	1.981	Pink	I-42	ILD-42	0.515	0.390
CSWS-1/0-38	1/0 AWG	#1 FLEX	1/0-6 AWG	3/8	0.406	0.875	0.738	0.750	1.981	Pink	I-42	ILD-42	0.515	0.390
CSWS-1/0-12	1/0 AWG	#1 FLEX	1/0-6 AWG	1/2	0.562	1.250	0.738	0.750	2.356	Pink	I-42	ILD-42	0.515	0.390
CSWS-2/0-10	2/0 AWG	1/0 FLEX	2/0-4 AWG	10	0.219	0.562	0.811	0.750	1.708	Black	I-45	ILD-45	0.562	0.437
CSWS-2/0-14	2/0 AWG	1/0 FLEX	2/0-4 AWG	1/4	0.281	0.875	0.811	0.750	2.021	Black	I-45	ILD-45	0.562	0.437
CSWS-2/0-516	2/0 AWG	1/0 FLEX	2/0-4 AWG	5/16	0.343	0.875	0.811	0.750	2.021	Black	I-45	ILD-45	0.562	0.437
CSWS-2/0-38	2/0 AWG	1/0 FLEX	2/0-4 AWG	3/8	0.406	0.875	0.811	0.750	2.021	Black	I-45	ILD-45	0.562	0.437
CSWS-2/0-12	2/0 AWG	1/0 FLEX	2/0-4 AWG	1/2	0.562	1.250	0.811	0.750	2.396	Black	I-45	ILD-45	0.562	0.437
CSWS-3/0-10	3/0 AWG	2/0 FLEX	3/0-2 AWG	10	0.219	0.562	0.885	0.750	1.751	Orange	I-50	ILD-50	0.609	0.484
CSWS-3/0-14	3/0 AWG	2/0 FLEX	3/0-2 AWG	1/4	0.281	0.875	0.885	0.750	2.064	Orange	I-50	ILD-50	0.609	0.484
CSWS-3/0-516	3/0 AWG	2/0 FLEX	3/0-2 AWG	5/16	0.343	0.875	0.885	0.750	2.064	Orange	I-50	ILD-50	0.609	0.484
CSWS-3/0-38	3/0 AWG	2/0 FLEX	3/0-2 AWG	3/8	0.406	0.875	0.885	0.750	2.064	Orange	I-50	ILD-50	0.609	0.484
CSWS-3/0-12	3/0 AWG	2/0 FLEX	3/0-2 AWG	1/2	0.562	1.250	0.885	0.750	2.439	Orange	I-50	ILD-50	0.609	0.484
CSWS-4/0-14	4/0 AWG	3/0 FLEX	4/0-1 AWG	1/4	0.281	0.875	0.999	0.875	2.241	Purple	I-54	ILD-54	0.687	0.546
CSWS-4/0-516	4/0 AWG	3/0 FLEX	4/0-1 AWG	5/16	0.343	0.875	0.999	0.875	2.241	Purple	I-54	ILD-54	0.687	0.546
CSWS-4/0-38	4/0 AWG	3/0 FLEX	4/0-1 AWG	3/8	0.406	0.875	0.999	0.875	2.241	Purple	I-54	ILD-54	0.687	0.546
CSWS-4/0-12	4/0 AWG	3/0 FLEX	4/0-1 AWG	1/2	0.562	1.250	0.999	0.875	2.616	Purple	I-54	ILD-54	0.687	0.546
CSWS-250-516	250kcmil	4/0 FLEX	250kcmil - 1/0 AWG	5/16	0.343	0.875	1.088	1.063	2.469	Yellow	I-62	ILD-62	0.750	0.593
CSWS-250-38	250kcmil	4/0 FLEX	250kcmil - 1/0 AWG	3/8	0.406	0.875	1.088	1.063	2.469	Yellow	I-62	ILD-62	0.750	0.593
CSWS-250-12	250kcmil	4/0 FLEX	250kcmil - 1/0 AWG	1/2	0.562	1.250	1.088	1.063	2.844	Yellow	I-62	ILD-62	0.750	0.593
CSWS-300-516	300kcmil	250 G,H FLEX	300kcmil - 2/0 AWG	5/16	0.343	0.875	1.189	1.063	2.525	White	I-66	ILD-66	0.812	0.660
CSWS-300-38	300kcmil	250 G,H FLEX	300kcmil - 2/0 AWG	3/8	0.406	0.875	1.189	1.063	2.525	White	I-66	ILD-66	0.812	0.660
CSWS-300-12	300kcmil	250 G,H FLEX	300kcmil - 2/0 AWG	1/2	0.562	1.250	1.189	1.063	2.900	White	I-66	ILD-66	0.812	0.660
CSWS-300-58	300kcmil	250 G,H FLEX	300kcmil - 2/0 AWG	5/8	0.656	1.437	1.189	1.063	3.087	White	I-66	ILD-66	0.812	0.660

+ Available 3rd quarter 2008

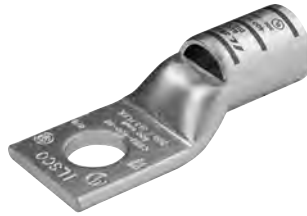
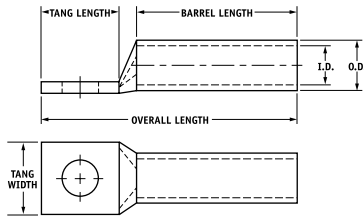
* When installed with specified dieless tools

See pages 34 to 39 for complete tooling information.

TYPE CSWS

Features

- Manufactured from high strength seamless copper tubing.
- Electro-Tin plated.
- Maximum conductivity and excellent crimping characteristics.
- Chamfered entry.
- Color coded.
- UL 486A 90°C Listed and CSA Certified for 600 Volts.
- If proper high voltage spacing and insulation techniques are used, may be used for high voltage applications up to 35KV.
- For Copper conductor only.
- IlSCO connectors are UL Listed and CSA Certified with ILSCO or other Manufacturers' tools.
- UL File E6207



Catalog Number	Wire Size	Alt Wire Size	Expanded* Wire Range	Bolt Size	Stud Hole Dia.	Tang Length	Tang Width	Barrel Length	Overall Length	Die Color Code	Die Index	Die Catalog Number	O.D.	I.D.
CSWS-350-38	350kcmil	250 I,K,M FLEX 262.2 DLO	350kcmil - 3/0 AWG	3/8	0.406	0.875	1.291	1.063	2.561	Red	I-71	ILD-71	0.890	0.703
CSWS-350-12	350kcmil	250 I,K,M FLEX 262.2 DLO	350kcmil - 3/0 AWG	1/2	0.562	1.250	1.291	1.063	2.936	Red	I-71	ILD-71	0.890	0.703
CSWS-350-58	350kcmil	250 I,K,M FLEX 262.2 DLO	350kcmil - 3/0 AWG	5/8	0.656	1.437	1.291	1.063	3.123	Red	I-71	ILD-71	0.890	0.703
CSWS-400-38	400kcmil	300 G,H,I,K,M FLEX 313.1 DLO	400kcmil - 4/0 AWG	3/8	0.406	0.875	1.365	1.188	2.730	Blue	I-76	ILD-76	0.937	0.750
CSWS-400-12	400kcmil	300 G,H,I,K,M FLEX 313.1 DLO	400kcmil - 4/0 AWG	1/2	0.562	1.250	1.365	1.188	3.105	Blue	I-76	ILD-76	0.937	0.750
CSWS-400-58	400kcmil	300 G,H,I,K,M FLEX 313.1 DLO	400kcmil - 4/0 AWG	5/8	0.656	1.437	1.365	1.188	3.292	Blue	I-76	ILD-76	0.937	0.750
CSWS-500-12	500kcmil	350 G,H,I,K,M FLEX 373.7 DLO	500kcmil - 250kcmil	1/2	0.562	1.250	1.535	1.300	3.282	Brown	I-87	ILD-87	1.062	0.828
CSWS-500-38	500kcmil	350 G,H,I,K,M FLEX 373.7 DLO	500kcmil - 250kcmil	3/8	0.406	0.875	1.535	1.300	2.907	Brown	I-87	ILD-87	1.062	0.828
CSWS-500-58	500kcmil	350 G,H,I,K,M FLEX 373.7 DLO	500kcmil - 250kcmil	5/8	0.656	1.437	1.535	1.300	3.469	Brown	I-87	ILD-87	1.062	0.828
CSWS-600-38	600kcmil	400 G,H,I,K,M FLEX 444.4 DLO	600kcmil - 250kcmil	3/8	0.406	0.875	1.712	1.375	3.059	Green	I-94	ILD-94	1.187	0.920
CSWS-600-12	600kcmil	400 G,H,I,K,M FLEX 444.4 DLO	600kcmil - 250kcmil	1/2	0.562	1.250	1.712	1.375	3.434	Green	I-94	ILD-94	1.187	0.920
CSWS-600-58	600kcmil	400 G,H,I,K,M FLEX 444.4 DLO	600kcmil - 250kcmil	5/8	0.656	1.437	1.712	1.375	3.621	Green	I-94	ILD-94	1.187	0.920
CSWS-700-38	700kcmil	500 G,H,I,K,M FLEX 535.3 DLO	700kcmil - 350kcmil	3/8	0.406	0.875	1.816	1.375	3.119	Pink	I-99	ILD-99	1.250	0.991
CSWS-700-12	700kcmil	500 G,H,I,K,M FLEX 535.3 DLO	700kcmil - 350kcmil	1/2	0.562	1.250	1.816	1.375	3.494	Pink	I-99	ILD-99	1.250	0.991
CSWS-700-58	700kcmil	500 G,H,I,K,M FLEX 535.3 DLO	700kcmil - 350kcmil	5/8	0.656	1.437	1.816	1.375	3.681	Pink	I-99	ILD-99	1.250	0.991
CSWS-750-38	750kcmil	600 G,H,I,K,M FLEX 646.4 DLO	750 kcmil - 500kcmil	3/8	0.406	0.875	1.901	1.500	3.277	Black	I-106	ILD-106	1.313	1.031
CSWS-750-12	750kcmil	600 G,H,I,K,M FLEX 646.4 DLO	750kcmil - 500kcmil	1/2	0.562	1.250	1.901	1.500	3.652	Black	I-106	ILD-106	1.313	1.031
CSWS-750-58	750kcmil	600 G,H,I,K,M FLEX 646.4 DLO	750kcmil - 500kcmil	5/8	0.656	1.437	1.901	1.500	3.839	Black	I-106	ILD-106	1.313	1.031
CSWS-1000-38	1000kcmil	750 G,H,I FLEX 777.7 DLO	1000kcmil - 750kcmil	3/8	0.406	0.875	2.169	1.625	3.525	White	I-125	ILD-125	1.500	1.172
CSWS-1000-12	1000kcmil	750 G,H,I FLEX 777.7 DLO	1000kcmil - 750kcmil	1/2	0.562	1.250	2.169	1.625	3.900	White	I-125	ILD-125	1.500	1.172
CSWS-1000-58	1000kcmil	750 G,H,I FLEX 777.7 DLO	1000kcmil - 750kcmil	5/8	0.656	1.437	2.169	1.625	4.087	White	I-125	ILD-125	1.500	1.172

* When installed with specified dieless tools

See pages 34 to 39 for complete tooling information.