

C-2000™ Push Buttons

600 Volts Max. AC/300 Volts Max. DC
10 Amps. Continuous AC/2.5 Amps. Continuous DC

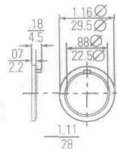
Accessories

For Use With	Accessory	Description	Catalog No.	List Price, GO-10GC
○ ○ ● □	Locking Ring Wrench	For tightening of metal locking ring	P9ACWAF	\$ 7.50
○ ○ ● □	Printed Circuit Board Adapter	Use with contact blocks and power supplies with quick-connect terminals; solder connection to printed circuit board	P9ACA6	4.00
○ ○ ● □	Flange for 3 Contact Blocks	Standard flange provided with all operators	P9ACFS3	3.00
○ ○ ● □	Flange for 5 Contact Blocks	Optional flange for mounting of maximum number of contact blocks	P9ACFS5	4.50
○ ○ ● □	Reed Logic Flange	Optional for Reed block and power supply	P9ACFSM	4.50
○ ○ ● □	Padlocking Device with Clear Cover	Limits access to push buttons (flush and extended) and knob selector switch	P9ACRCL	15.00
○ ○ ●	Extended Guard for 40mm Mushroom-Head Push Button	Prevents accidental actuation of mushroom-head push button.	P9ARRE4	10.00
○ ○ ●	Orientation Tab Bypass Ring	Allows mounting of devices in panels without locating notch	P9ARAND	2.00
○ ○ ●	Orientation Tab Extender	Extends operator tab from 1.5 to 2.5mm allowing mounting of devices on very thick panels	P9ARADE	2.00
○ ○ ●	Ring Reducer, Black Plastic	Adapter allows C-2000 devices to be mounted in 30mm diameter hole	P9ARAX32	7.50
○ ○ ●	Ring Reducer, Polished Chrome	Adapter allows C-2000 devices to be mounted in 30mm diameter hole	P9ARAM32	7.50
□	Cap and Lens Extractor	Provides easy removal of caps and lenses	P9ASEBG	7.00
○ ○ ● □	Lamp Extractor	Provides easy removal of bulbs	080ESL	4.00
○ ○ ●	Enclosure Hole Plug, Black Plastic	Plugs unused holes in panel	P9ARHPR	5.00
□	Enclosure Hole Plug, 30 x 30mm, Black Plastic	Plugs unused holes in panel	P9ASHP3	5.00
□	Enclosure Hole Plug, 30 x 50mm, Black Plastic	Plugs unused holes in panel	P9ASHP5	5.00
○ ○ ● □	Push-On/Push-Off Device	Converts a momentary push button into a maintained push button	P9ACDPP	26.00
—	Assembled 4-Device Tabletop Display	Handy display of C-2000 push buttons	P9ACT04	120.00
—	Assembled 16-Device Tabletop Display	Handy display of C-2000 push buttons	P9ACT16	250.00
—	Sample Case	Portable overview of C-2000 push buttons	P9ACKITU	250.00
○ ○ ● □	Marking Plate, White	Snaps on back of contact block for circuit identification	P9ACPIU	.25

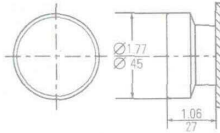
- ① Use only early make contact (P9B10VA) when normally open contact is desired.
- ② Not suitable for use with push-pull or twist-to-release mushroom-heads; see maximum number of contacts in table, pg. 9-56.
- ③ Packaged in multiples of 5, order in multiples of (5).

Style Legend

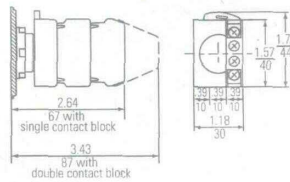
○ Polished Chrome	○ Satin Chrome	● Round Engineered Plastic	□ Square Engineered Plastic
-------------------	----------------	----------------------------	-----------------------------



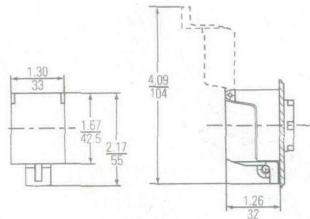
Orientation Tab Extender



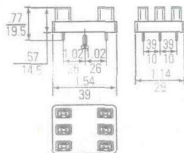
Extended Guard For 40mm Mushroom-Head Push Button



Push-On/Push-Off Device



Padlocking Attachment



Printed Wiring Board Adapter