

# Terminal / Junction Box KL

## Stainless Steel 304

Model No.	Width mm	Height mm	Depth mm	Mounting Plate	Support Rail (DIN Rail) TS 35/7.5
1521010	150	150	80	1560700	2314000
1523010	200	200	80	1562700	2315000
1522010	300	150	80	1561700	2316000
1524010	300	200	80	1563700	2316000
1527010	150	150	120	1560700	2314000
1528010	200	200	120	1562700	2315000
1529010	300	200	120	1563700	2316000
1526010	300	300	120	1567700	2316000
1525010	400	200	120	1564700	2317000


## Stainless Steel 316

Model No.	Width mm	Height mm	Depth mm	Mounting Plate	Support Rail (DIN Rail) TS 35/7.5
1521510	150	150	80	1560700	2314000
1523510	200	200	80	1562700	2315000
1522510	300	150	80	1561700	2316000
1524510	300	200	80	1563700	2316000
1525510	400	200	120	1564700	2317000
1526510	300	300	120	1567700	2316000

## Stainless Steel IP 69K

Model No.	Width mm	Height mm	Depth mm	Mounting Plate	Support Rail (DIN Rail) TS 35/7.5
1024010	150	150	80	1560700	2314000
1024020	150	150	120	1560700	2314000
1024030	200	300	200	1575700	2315000
1024040	400	300	120	1568700	2317000

## Accessories

Model No.	Description	Packs Of	
1592000	Cover Hinges	6	
2570100	Earthing Set	5	
1590000	Wall Mounting Bracket (8mm - Zinc)	4	
1594000	Wall Mounting Bracket (8mm - Stainless Steel)	4	
1581000	Plastic Gland Plate (PG 13.5)	5	
1582000	Plastic Gland Plate (PG 13.5/16/21)	5	
2503010	Wall Mounting Bracket (40mm - Zinc Plated)	4	
2508010	Wall Mounting Bracket (10mm - Zinc Plated)	4	
2433000	Wall Mounting Bracket (10mm - 304 Stainless Steel)	4	
2433500	Wall Mounting Bracket (10mm - 316 Stainless Steel)	4	

## E-Box Enclosures EB

The EB enclosure series with its shallow depths is designed to support applications where space is limited and offer protection for dense wiring and sensitive small instruments.

The range comes complete with 180° hinges and a universal lock system that can be equipped with a range of lock inserts and handles. The removable mounting plate enables simple components assembly to facilitate compact wiring in the smallest possible space.

### Material

- Enclosure: sheet steel
- Door: Sheet steel, all-round foamed-in PU seal

### Supply Includes

- Enclosure with hinged door
- 180° hinge
- Cam lock with double-bit insert
- Mounting plate



## Mild Steel

Model No.	Width mm	Height mm	Depth mm
1551500	150	150	80
1545500	150	300	80
1546500	200	200	80
1552500	200	300	80
1547500	200	400	80
1553500	150	150	120
1548500	150	300	120
1549500	200	200	120
1554500	200	300	120
1550500	200	400	120
1557500	200	500	120
1555500	300	300	120
1556500	300	400	120
1577500	300	400	155
1578500	300	600	155
1579500	300	800	155

## Accessories

Model No.	Description	Packs Of	
1590000	Wall Mounting Bracket (8mm - Zinc Plated)	4	
2584000	Pole Clamp	1 set	
2309000	Mounting Clamp	30	
2503010	Wall Mounting Bracket (40mm - Zinc Plated)	4	
2508010	Wall Mounting Bracket (10mm - Zinc Plated)	4	

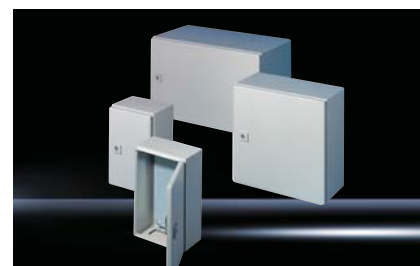


# Wall Mounted Enclosures AE



The Rittal range of wall mounted enclosures have been on the market for over 30 years. In this time the manufacturing of these enclosures has been perfected, giving them a quality that cannot be matched. The range has evolved to cater for applications where stainless steel is necessary.

Choose from 75 variants including powder coated mild steel or stainless steel, single or double door versions, glazed doors and a variety of operating panels. The AE Series is well complemented by a range of accessories that further adapt the enclosures to a given application.



**Material:**

- Enclosure: Sheet steel
- Door: Sheet steel, all-round foamed-in PU seal

**Supply includes:**

- Enclosure with hinged door(s), of all-round solid construction
- Gland plate(s) in enclosure base
- For single-door enclosures, door hinged on right, may be swapped to left (except with AE 1032.500 and AE 1035.500)
- With cam lock or 3-point lock system & Mounting plate

## Mild Steel

Model No.	Width mm	Height mm	Depth mm	Rain Canopy Mild Steel	Rain Canopy Stainless Steel	Door(s)
1032500	200	300	120	-	-	1
1035500	200	300	155	-	2470000	1
1036500	300	300	155	-	-	1
1033500	300	300	210	-	2361000	1
1034500	300	400	210	-	2361000	1
1030500	380	300	155	-	2471000	1
1031500	380	300	210	2501500	2472000	1
1380500	380	380	210	2501500	2472000	1
1038500	380	600	210	2501500	2472000	1
1338500	380	600	350	-	-	1
1045500	400	500	210	-	-	1
1037500	400	800	300	-	-	1
1050500	500	500	210	-	2362000	1
1350500	500	500	300	-	-	1
1057500	500	700	250	-	-	1
1039500	600	380	210	2502500	2473000	1
1339500	600	380	350	2511500	-	1
1060500	600	600	210	2502500	2473000	1
1054500	600	600	250	-	-	1
1360500	600	600	350	2511500	-	1
1076500	600	760	210	2502500	2473000	1
1376500	600	760	350	2511500	-	1
1058500	600	800	250	-	-	1
1090500	600	1000	250	-	-	1
1260500	600	1200	300	-	-	1



Double Door Enclosures

# Wall Mounted Enclosures AE

1077500	760	760	210	-	-	1
1073500	760	760	300	-	2474000	1
1055500	800	600	300	-	2475000	1
1180500	800	1000	300	-	2475000	1
1280500	800	1200	300	-	2475000	1
1100500	1000	760	210	-	-	2
1130500	1000	760	300	-	2363000	2
1110500	1000	1000	300	-	2363000	2
1213500	1000	1200	300	-	2363000	2
1114500	1000	1400	300	-	2363000	2

**Material**

- Enclosure: Stainless Steel
- Door: Stainless steel, all-round foamed-in PU seal
- Mounting plate: Sheet steel
- Locks: Die-cast zinc, 316 s/st enclosures supplied with 316 s/st lock

**Supply Includes**

- Enclosure with door(s)
- Cam lock or 3-point lock system (for AE 1017.X00 and AE 1019.X00) with double-bit insert
- Mounting plate

## Stainless Steel 304/316

Model No. 304 SS	Model No. 316 SS	Width mm	Height mm	Depth mm	Rain Canopy Stainless Steel	Door(s)
1001600	1001500	200	300	120	-	1
1002600	1002500	200	300	155	2470000	1
1003600	1003500	300	300	210	2361000	1
1005600	1005500	300	380	210	2361000	1
1004600	1004500	380	300	155	2471000	1
1011600	1011500	380	300	210	2472000	1
1006600	1006500	380	380	210	2472000	1
1008600	1008500	380	600	210	2472000	1
1015600	1015500	400	500	210	-	1
1007600	1007500	500	500	210	2362000	1
1013600	1013500	500	500	300	-	1
1009600	1009500	600	380	210	2473000	1
1010600	1010500	600	600	210	2473000	1
1012600	1012500	600	760	210	2473000	1
1068600	1068500	600	800	300	-	1
1014600	1014500	760	760	300	2474000	1
1016600	1016500	800	1000	300	2475000	1
1017600	1017500	800	1200	300	2475000	1
1018600	1018500	1000	1000	300	2363000	2
1019600	1019500	1000	1200	300	2363000	2



# Wall Mounted Enclosures AE

## Accessories

Model No.	Description	Packs Of		
2508100	Wall Mounting Bracket (15mm - Zinc Plated)	4		
2503010	Wall Mounting Bracket (40mm - Zinc Plated)	4		
2508010	Wall Mounting Bracket (10mm - Zinc Plated)	4		
2433000	Wall Mounting Bracket (10mm - 304 Stainless Steel)	4		
2433500	Wall Mounting Bracket (10mm - 316 Stainless Steel)	4		
2505510	Wall Angle (Mild Steel)	4		
2583010	Wall Angle (304 Stainless Steel)	4		
2584000	Pole Clamp	1 set		
1199100	Baying Kit	1 set		
2449000	180° Hinges	2		
2519000	Door Stay (except 1032500 and 1035500)	5		
2373210	Adjustable Depth Stays (210mm Enclosure Depth)	4		
2373250	Adjustable Depth Stays (250mm Enclosure Depth)	4		
2373300	Adjustable Depth Stays (300mm Enclosure Depth)	4		
2373350	Adjustable Depth Stays (350mm Enclosure Depth)	4		

\* Inner door available upon request