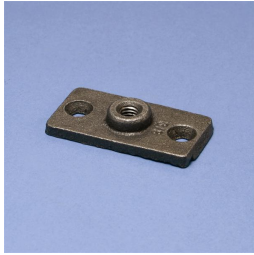
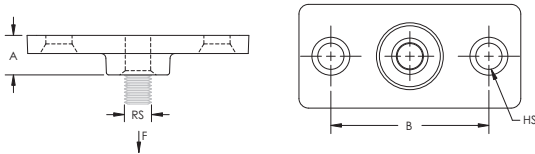


365M Malleable Iron Wall or Ceiling Plate – 365M0037EG



- Structural attachment to support hanger rod from a ceiling or a wall



Part Number	365M0037EG
Material	Cast Iron
Finish	Electrogalvanized
Rod Size (RS)	3/8"
Hole Size (HS)	1/4"
A	15/32"
B	1 15/16"
Pipe Size	2" Max
Static Load (F)	180 lb
Standard Packaging Quantity	100 pc
UPC	78285636477

Follow fastener manufacturer's recommended shear and pull-out strength when fastening to the structure. Fastener not included.

WARNING

ERICO products shall be installed and used only as indicated in ERICO's product instruction sheets and training materials. Instruction sheets are available at www.erico.com and from your ERICO customer service representative. Improper installation, misuse, misapplication or other failure to completely follow ERICO's instructions and warnings may cause product malfunction, property damage, serious bodily injury and death.

Copyright © 2015 ERICO International Corporation. All rights reserved.

CADDY, CADWELD, CRITEC, ERICO, ERIFLEX, ERITECH, and LENTON are registered trademarks of ERICO International Corporation.

