

ST.-LIGHT ELEMENTS LED, GREEN, AC/DC 24V



Figure similar

General technical data:		
product brand name		SIRIUS
Product component Light source		Yes
Design of the optical signal		continous light
Type of voltage of the operating voltage		AC/DC
Operating voltage		
• 1 at DC Rated value	V	24
• 1 at AC at 50 Hz Rated value	V	24
• 1 at AC at 60 Hz Rated value	V	24
Equipment marking acc. to DIN EN 61346-2		P
Mechanical data:		
Outer diameter of the signal column element	mm	50
Lamp:		
Type of light source		LED
Ambient conditions:		
Ambient temperature during operation	°C	-20 ... +50
Protection class IP		IP54
Height	mm	67

Width

mm

52

Certificates/ approvals:

General Product Approval

EMC

Declaration of  
Conformity

Shipping Approval



UL



C-TICK



EG-Konf.



DNV

Further information

**Information- and Downloadcenter (Catalogs, Brochures,...)**

<http://www.siemens.com/industrial-controls/catalogs>

**Industry Mall (Online ordering system)**

<http://www.siemens.com/industrymall>

**Cax online generator**

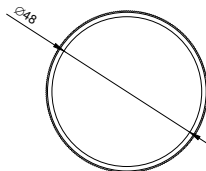
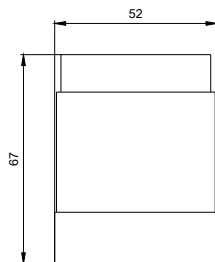
<http://support.automation.siemens.com/WW/CAXorder/default.aspx?lang=en&mlfb=8WD42205AC>

**Service&Support (Manuals, Certificates, Characteristics, FAQs,...)**

<https://support.industry.siemens.com/cs/ww/en/ps/8WD42205AC>

**Image database (product images, 2D dimension drawings, 3D models, device circuit diagrams, EPLAN macros, ...)**

[http://www.automation.siemens.com/bilddb/cax\\_de.aspx?mlfb=8WD42205AC&lang=en](http://www.automation.siemens.com/bilddb/cax_de.aspx?mlfb=8WD42205AC&lang=en)



Web ID: 8WD42-...\_ALL

last modified:

17.07.2015