

STEADY-LIGHT ELEMENTS, GREEN AC/DC
24V...230V



Figure similar

General technical data:		
product brand name		SIRIUS
Product component Light source		No
Design of the optical signal		continous light
Type of voltage of the operating voltage		AC/DC
Operating voltage		
• at DC Rated value	V	240 ... 12
• at AC at 50 Hz Rated value	V	12 ... 240
• at AC at 60 Hz Rated value	V	12 ... 240
Equipment marking acc. to DIN EN 61346-2		P

Mechanical data:		
Outer diameter of the signal column element	mm	50

Lamp:		
Type of light source		filament lamp / LED

Ambient conditions:		
Ambient temperature during operation	°C	-20 ... +60
Protection class IP		IP54
Height	mm	67

Width

mm

52

Certificates/ approvals:

General Product Approval

EMC

Declaration of
Conformity

Shipping Approval



UL



C-TICK



EG-Konf.



DNV

Further information

Information- and Downloadcenter (Catalogs, Brochures,...)

<http://www.siemens.com/industrial-controls/catalogs>

Industry Mall (Online ordering system)

<http://www.siemens.com/industrymall>

Cax online generator

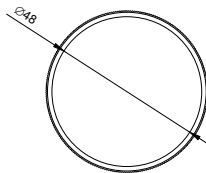
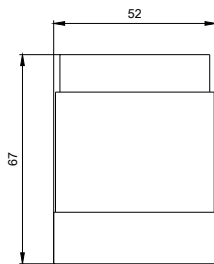
<http://support.automation.siemens.com/WW/CAXorder/default.aspx?lang=en&mlfb=8WD42001AC>

Service&Support (Manuals, Certificates, Characteristics, FAQs,...)

<https://support.industry.siemens.com/cs/ww/en/ps/8WD42001AC>

Image database (product images, 2D dimension drawings, 3D models, device circuit diagrams, EPLAN macros, ...)

http://www.automation.siemens.com/bilddb/cax_de.aspx?mlfb=8WD42001AC&lang=en



Web ID: 8WD42-..._ALL

last modified:

17.07.2015