

SURGE SUPPRESSOR, DIODE COMBINATION, DC 24 V, FOR MOTOR CONTACTORS SZ S0,



General technical data:

product brand name		SIRIUS
Product designation		surge suppressor
Size of contactor		S0
Design of the surge suppressor		with diode assemblies
Ambient temperature		
• during storage	°C	-40 ... +80
• during operation	°C	-25 ... +60

Control circuit/ Control:

Type of voltage of the control supply voltage		DC
Control supply voltage 1		
• at DC		
— Rated value	V	24






Installation/ mounting/ dimensions:

mounting position		any
Mounting type		clip-on
Width	mm	30
Height	mm	19

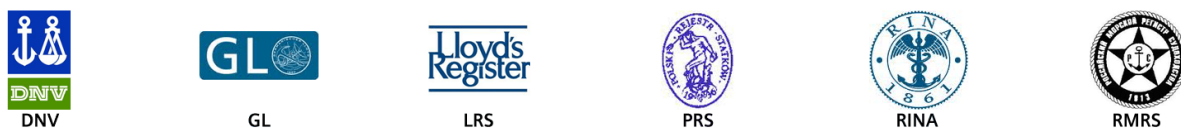
Depth	mm	12
-------	----	----

Certificates/ approvals:

Certificate of suitability CE / UL / CSA / CCC

General Product Approval	Declaration of Conformity	Test Certificates	Shipping Approval
	 UL	 EG-Konf.	spezielle Prüfbescheinigung n  ABS  BUREAU VERITAS

Shipping Approval

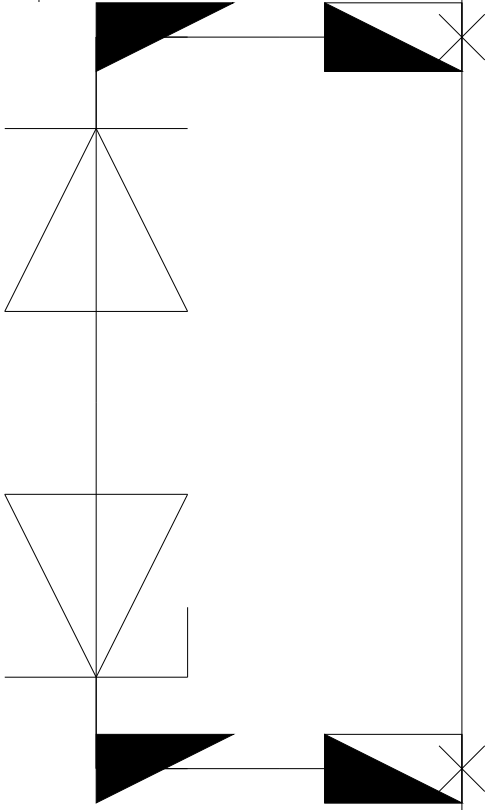
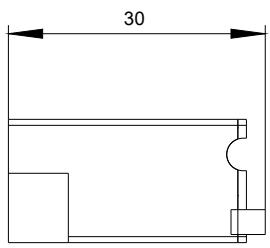
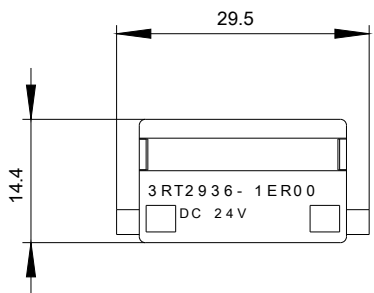


other



Further information

- Information- and Downloadcenter (Catalogs, Brochures,...)
<http://www.siemens.com/industrial-controls/catalogs>
- Industry Mall (Online ordering system)
<http://www.siemens.com/industrymall>
- Cax online generator
<http://support.automation.siemens.com/WW/CAXorder/default.aspx?lang=en&mlfb=3RT29261ER00>
- Service&Support (Manuals, Certificates, Characteristics, FAQs,...)
<https://support.industry.siemens.com/cs/ww/en/ps/3RT29261ER00>
- Image database (product images, 2D dimension drawings, 3D models, device circuit diagrams, EPLAN macros, ...)
http://www.automation.siemens.com/bilddb/cax_de.aspx?mlfb=3RT29261ER00&lang=en



last modified:

20.07.2015