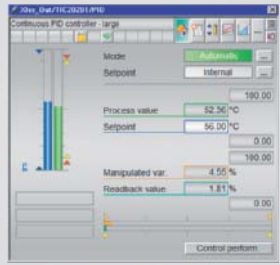


SIMATIC PCS 7 Process Control System

Catalog ST PCS 7 · June 2012




SIMATIC PCS 7

Answers for industry.


SIEMENS

Related catalogs


SIMATIC ST PCS 7.1
 Add-ons for the SIMATIC PCS 7 Process Control System
 PDF (E86060-K4678-A121-A9-7600)




SIMATIC ST PCS 7.2
 Migration solutions with the SIMATIC PCS 7 Process Control System
 PDF (E86060-K4678-A131-A5-7600)




SIMATIC ST 70
 Products for Totally Integrated Automation and Micro Automation
 E86060-K4670-A101-B3-7600




SIMATIC HMI / PC-based Automation ST 80/ST PC
 Human Machine Interface Systems
 PC-based Automation
 E86060-K4680-A101-B8-7600




Industrial Communication IK PI
 SIMATIC NET
 E86060-K6710-A101-B7-7600




Process Automation FI 01
 Field Instruments for Process Automation
 E86060-K6201-A101-B4-7600




SITRAIN ITC
 Training for Automation and Industrial Solutions
 Only available in German
 E86060-K6850-A101-C2



Products for Automation and Drives CA 01
 Interactive Catalog
 DVD: E86060-D4001-A510-D1-7600



Industry Mall
 Information and Ordering Platform in the Internet:
www.siemens.com/industrymall



Ordering data	Order No.	Order No.	
CP 443-1 Communication module for connecting SIMATIC S7-400 to Industrial Ethernet through TCP/IP, ISO and UDP; PROFINET IO Controller, MRP; integrated real-time switch ERTEC with two ports; 2 x RJ45 interface; S7 communication, open communication (SEND/RECEIVE) with FETCH/WRITE, with or without RFC 1006, DHCP, SNMP V2, diagnostics, multicast, access protection over IP access list, initialization over LAN 10/100 Mbps with electronic manual on DVD	6GK7 443-1EX30-0XE0	PS 405 power supply module; 10 A, optional redundancy 24 V DC; 5 V DC/10 A, 24 V DC/1 A; with battery compartment for 2 backup batteries, module occupies 2 slots	6ES7 405-0KR02-0AA0
CP 443-5 Extended Communication module for connection of SIMATIC S7-400 to PROFIBUS as DP master or for S7 communication, for increasing the number of DP lines, for data set routing with SIMATIC PDM and for 10-ms time stamp, electronic manual on CD; module occupies 1 slot	6GK7 443-5DX05-0XE0	PS 405 power supply module; 20 A 24 V DC; 5 V DC/20 A, 24 V DC/1 A; with battery compartment for 2 backup batteries, module occupies 2 slots	6ES7 405-0RA02-0AA0
IF 964-DP Interface module for connection of another PROFIBUS DP line, for plugging into a free DP module slot of the CPU	6ES7 964-2AA04-0AB0	Backup battery Type AA, 2.3 Ah	6ES7 971-0BA00
PS 407 power supply module; 4 A 120/230 V AC/DC; 5 V DC/4 A, 24 V DC/0.5 A; with battery compartment for 1 backup battery, module occupies 1 slot	6ES7 407-0DA02-0AA0	Aluminum UR1 rack 18 slots	6ES7 400-1TA11-0AA0
PS 407 power supply module; 10 A 120/230 V AC/DC; 5 V DC/10 A, 24 V DC/1 A; with battery compartment for 2 backup batteries, module occupies 2 slots	6ES7 407-0KA02-0AA0	Aluminum UR2 rack 9 slots	6ES7 400-1JA11-0AA0
PS 407 power supply module; 10 A, optional redundancy 120/230 V AC/DC; 5 V DC/10 A, 24 V DC/1 A; with battery compartment for 2 backup batteries, module occupies 2 slots	6ES7 407-0KR02-0AA0	Aluminum CR3 rack 4 slots	6ES7 401-1DA01-0AA0
PS 407 power supply module; 20 A 120/230 V AC/DC; 5 V DC/20 A, 24 V DC/1 A; with battery compartment for 2 backup batteries, module occupies 2 slots	6ES7 407-0RA02-0AA0	Steel UR1 rack 18 slots	6ES7 400-1TA01-0AA0
PS 405 power supply module; 4 A 24 V DC; 5 V DC/4 A, 24 V DC/0.5 A; with battery compartment for 1 backup battery, module occupies 1 slot	6ES7 405-0DA02-0AA0	Steel UR2 rack 9 slots	6ES7 400-1JA01-0AA0
PS 405 power supply module; 10 A 24 V DC; 5 V DC/10 A, 24 V DC/1 A; with battery compartment for 2 backup batteries, module occupies 2 slots	6ES7 405-0KA02-0AA0		