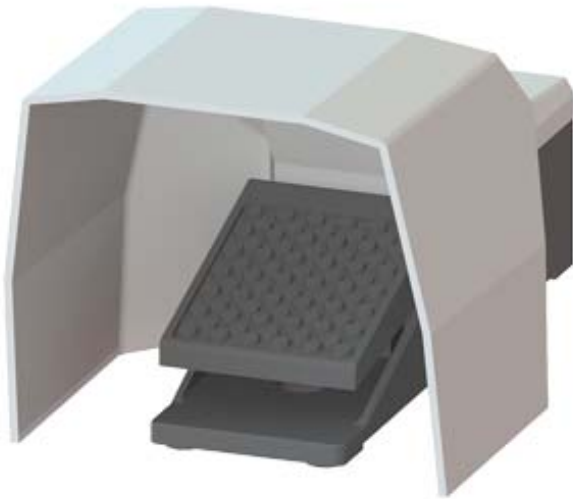


FOOT -OPERATED BUTTON, (WITHOUT LATCHING) SINGLE PEDAL, M20X1,5 CABLE ENTRY IP65, 1NO + 1NC WITH COVER



Product designation	momentary-contact foot switch
General technical data:	
Protection class IP	IP65
Equipment marking	
• acc. to DIN EN 61346-2	S
• acc. to DIN EN 81346-2	S
Number of switching steps	1
Number of the actuation pedals	1
Enclosure:	
Material of the enclosure	metal
Color	
• of the enclosure	black
• of top part of the enclosure	grey
Safety related data:	
B10 value with high demand rate acc. to SN 31920	1 000 000
Proportion of dangerous failures	
• with low demand rate acc. to SN 31920	50 %
• with high demand rate acc. to SN 31920	50 %

T1 value for proof test interval or service life acc. to IEC 61508	20 y
--	------

Mechanical data:

Cable entry type	M20 x 1.5
------------------	-----------







Ambient conditions:



Ambient temperature	-25 ... +80 °C
• during operation	

Installation/ mounting/ dimensions:

Mounting type	screw fixing
Height	265 mm
Width	156 mm
Depth	138 mm

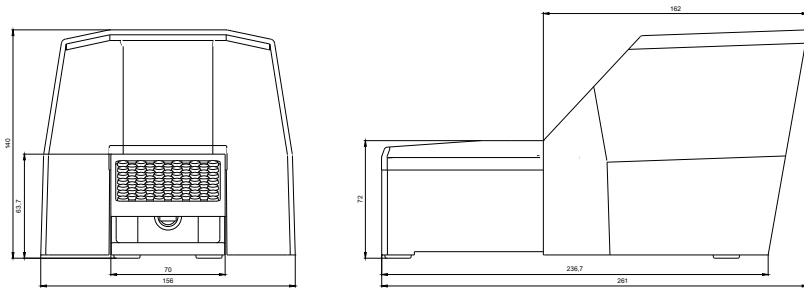
Certificates/ approvals:

General Product Approval	Declaration of Conformity	Shipping Approval
 CCC	 EG-Konf.	 ABS
 CSA		 LRS

Shipping Approval	other
 PRS	 RINA
	Bestätigungen
	sonstig

Further information

- Information- and Downloadcenter (Catalogs, Brochures,...)
<http://www.siemens.com/industrial-controls/catalogs>
- Industry Mall (Online ordering system)
<http://www.siemens.com/industrymall>
- Cax online generator
<http://support.automation.siemens.com/WW/CAXorder/default.aspx?lang=en&mfb=3SE29020AA20>
- Service&Support (Manuals, Certificates, Characteristics, FAQs,...)
<https://support.industry.siemens.com/cs/ww/en/ps/3SE29020AA20>
- Image database (product images, 2D dimension drawings, 3D models, device circuit diagrams, EPLAN macros, ...)
http://www.automation.siemens.com/bilddb/cax_de.aspx?mfb=3SE29020AA20&lang=en



last modified:

22.07.2015