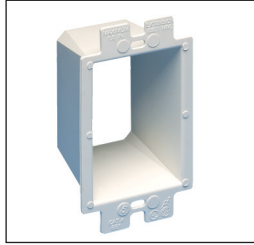
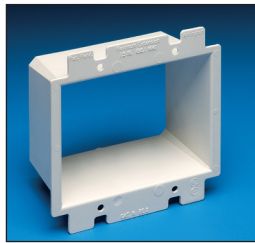


Box Extenders

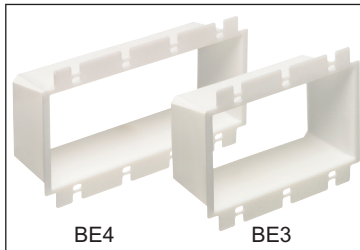
Levels and supports the wiring device where the box is set back from the wall surface. Extends the box up to 1-1/2".



BE1



BE2



BE4

BE3

Scan For Video



HEAVY-DUTY PLASTIC,
UL LISTED!

CATALOG NUMBER	UPC/DCI/NAED MFG #018997	UNIT PKG	STD PKG	DIM A	DIM B	DIM C
BE1	40160	25	250	2.313	4.188	1.813
BE1BAG	51905	1	100	2.313	4.188	1.813
BE2	48960	25	25	4.100	4.188	1.813
BE3	48967	10	10	5.937	4.188	1.813
BE4	48968	10	10	7.749	4.188	1.813

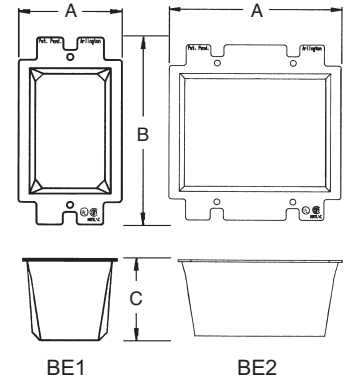
BE1BAG includes two #6 x 2" long screws.



Two Hour Fire Rating

Features and Benefits

- Allows the contractor to comply with 2011 NEC Article 314.20
- Levels and supports the wiring device where the box is set back from the wall surface (adjusts up to a 1-1/2" box extension)
- Works in handy boxes and 4" square electrical boxes with plaster rings for single switches or receptacle
- Functions with all standard devices, switches, and GFCIs
- Manufactured from 105°C continuous use 94V0 rated flame retardant plastic for safer installations



BE1

BE2

Installation Instructions

Problem...
Electrical box set back from wall surface.

To install without removing device wires, tilt the device through the BE1 at a slight angle, straighten it and tighten the screws!

SOLUTION...



1
Pull wires through, then press the BE1 firmly into the electrical box.



2
Attach wires to receptacle. Then tighten screws for a level, fully supported, code compliant installation.