

Technical Data Sheet

Jupiter[®] -1



Description

These high efficiency medium wallpak fixtures can be used for outdoor wall mount applications, including parking areas, loading docks, security lighting, waterfronts, recreational areas, and perimeter lighting. The functional design includes models that range from 50W - 175W metal halide or 50W - 150W high pressure sodium.

Construction

The housing is formed of die-cast aluminum and includes ½" conduit entries on the top (1) and sides (2). The side hinged door includes a rubber gasket.

Finish

The housing is finished in a durable polyester coat, in bronze or white colours.



Diffuser

The fixture features a specular pure anodized aluminum reflector inside a prismatic glass lens.

Electrical

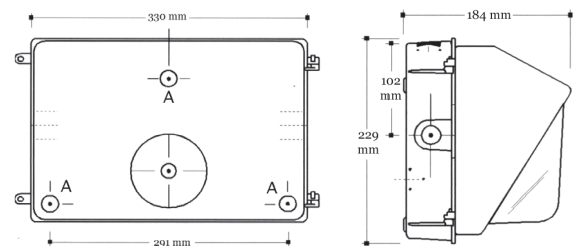
All models are CSA approved for outdoor use, and are wired with UL listed or CSA approved CWA high power factor or reactor type normal power factor ballasts for voltages ranging from 120V - 600V, 60 Hz operation.

Options

Options include high power factor capacitors (for 120V NPF reactor ballasts), photocontrols, and wire guards.

Ordering Information

Model	Lamp Type	Voltage	Optional HPF Capacitor	Optional Photocontrol	Housing Colour
Jupiter - 1	50W - MH	120V	HPF	PC IB (internal button)	Bronze White
	70W - MH	208V			
	100W - MH	240V			
	150W - MH	277V			
	175W - MH	347V			
	35W - HPS	480V		PC ES (external swivel)	
	50W - HPS	600V			
	70W - HPS				
	100W - HPS				
	150W - HPS				



Made in Canada



Symban Lighting Corp
 99 First Gulf Blvd. Brampton, ON
 T. 905.450.5999 | F. 905.450.6665