



# Lockout Tagout Solutions



Gate Valve Lockout



Standard Ball Valve Lockout



Prinzing Ball Valve Lockout



Plug Valve Lockout



Universal Valve Lockout - lockout butterfly handles with base clamping unit.



Universal Valve Lockout - lockout valves in "on", "off", or "throttle position" using 2 blocking arms.

## Gate Valve Lockouts

- Made of rugged injection-molded polypropylene
- Service temperatures from -25°F to 200°F
- Unique knockout center accommodates OS&Y or "rising stem" valves
- Accepts locks with shackles up to 3/8" in diameter

Part Number	Description	Price
65560	1"-2 1/2"	\$17.21
65561	2 1/2"-5"	\$28.86
65562	5"-6 1/2"	\$34.56
65563	6 1/2"-10" Gate Valve Lockout	\$43.28
65564	10"-13" Gate Valve Lockout	\$83.96
64057	1"- 6 1/2" Adjustable Gate Valve Lockout	\$35.01

## Ball Valve Lockouts

- Easy to use, single-piece design locks quarter-turn ball valves in OFF position
- Two sizes fit most valves up to 3"
- 65692, 65669 and 65693 are made of powder-coated steel
- 65666 is made of super-tough nylon (service temp -40° to 248° F)
- Prinzing Ball Valve Lockouts made from ultra-tuff polypropylene

Part Number	Max Shackle Diameter	Valve Size/ Pipe Diameter	Max Handle Width (inches)	Max Handle Thickness (inches)	Price Each
<b>Standard Ball Valve Lockouts</b>					
65666	3/32"	1/4" - 1"	1 1/2"	3/4"	\$25.20
65692	3/8"	1/4" - 1"	1 1/2"	3/4"	\$28.50
65669	3/32"	1 1/4" - 3"	2 1/10"	1 1/4"	\$41.42
65693	3/8"	1 1/4" - 3"	1 9/10"	1 1/4"	\$41.86
<b>Prinzing Ball Valve Lockouts</b>					
BS07A-RD	Small Ball Valve Lockout - For 1/2" to 2 1/2" dia. pipes				\$27.02
BS08A-RD	Large Ball Valve Lockout - For 2" to 8" dia. pipes				\$54.06

## Plug Valve Lockout

- Four Sizes to Fit Most 1" to 8" Diameter Manually-Actuated Plug Valves
- Durable, Tamper-Resistant, Compact in Size and Easy to Use
- Service Temperatures from -25°F to 200°F

Part Number	Description	Price
113231	Plug Valve L/O for up to 7/8" Stem Dia	\$21.41
113232	Plug Valve L/O for 1 1/16" - 1 3/8" Stem Dia	\$21.41
113233	Plug Valve L/O for 1 3/4" - 2 1/8" Stem Dia	\$32.12
113234	Plug Valve L/O for 2 3/16" - 2 1/2" Stem Dia	\$32.12

## Butterfly Valve / Universal Valve Lockout

- Made of industrial-grade steel and nylon
- Small UVLO: for use on handle widths up to 1" (max handle thickness of 0.6")
- Large UVLO: for use on handle widths up to 1.6" (max handle thickness of 1.1")

Part Number	Description	Price
51394	Small UVLO w/ 8' Sheathed Cable Attachment & Blocking Arm	\$81.38
51392	Large UVLO w/ 8' Sheathed Cable Attachment & Blocking Arm	\$87.54
65402	Blocking Arm Only - Small	\$26.08
65403	Blocking Arm Only - Large	\$28.72
50924	UVLO Base Clamping Unit Only - Small	\$43.12
50899	UVLO Base Clamping Unit Only - Large	\$49.29

# Lockout Tagout Solutions

## Single-Pole Circuit Breaker Lockouts

- Works on wide range of single-pole and internal-trip multi-pole breakers!
- Made of rugged polypropylene and impact modified nylon
- Use thumbscrew to clamp lockout securely onto switch tongue, then pull cover over thumbscrew and lock in place to prevent clamp from being loosened

Part Number	Description	Qty./Pkg	Price
65965	120/277V Clamp-On Breaker Lockout	6/pkg	\$56.93
65966	480/600V Clamp-On Breaker Lockout	6/pkg	\$62.83
65329	Oversized Breaker Lockout	1/pkg	\$16.02
65688	120V Snap-On Breaker Lockout	6/pkg	\$27.86



Single Pole Clamp-On Breaker Lockout



Oversize Breaker Lockout

## Multi-Pole Circuit Breaker Lockout

- Single device works with most major multi-pole breakers that employ a tie-bar
- Made of durable impact-modified nylon
- Use thumbscrew to clamp lockout securely over tie bar, then insert lock to prevent clamp from being loosened

Part Number	Description	Qty./Pkg	Price
66320	Universal Multi-Pole Breaker Lockout	6/pkg	\$56.93



Multi Pole Breaker Lockout



120v Snap-On Breaker Lockout

## Miniature Circuit Breaker Lockouts

- A safe and effective method for locking out miniature circuit breakers, commonly used in European- and Asian-made equipment
- Miniature Breaker Lockouts require NO TOOLS to install
- Recommended to lock with lightweight Brady Safety padlocks or other padlocks, the lockouts can take padlocks with a shackle diameter up to 9/32"

Part Number	Description	Price
90844	Pin Out Standard	\$12.29
90847	Pin In Standard	\$12.29
90850	Pin Out Wide	\$12.29
90853	Tie-Bar Lockout	\$12.29



Pin Out Standard



Pin In Standard



Pin Out Wide



Tie-Bar

## Electrical Plug Lockouts

- For high & low-voltage plugs up to 3" in diameter and 5 1/2" in length
- 2 sliding top lids can be used individually or together to accommodate small, medium and large-diameter cords up to 1 1/4"

Part Number	Description	Price
PLO23	3-in-1 Plug Lockout - English	\$16.10
PLO23-BI	3-in-1 Plug Lockout - English/Spanish	\$16.10
65674	Small 110V Plugout : 2"H x 2"D x 3 1/2"W with 1/2" diameter cable hole	\$15.44
65675	Large 220/500V Plugout: 3 1/4"H x 3 1/4"D x 7"W with 1" diameter cable hole	\$18.69



3-In-1 Electrical Plug Lockout



Electrical Plug Lockout

## Wall Switch Lockouts

- Device may be used with most wall-mounted switches
- Locks switch in "on" or "off" position. Lock not included

Part Number	Description	Qty./Pkg	Price
65696	Red Plastic Wall Switch Lockout	6/pkg	\$61.23
WSLO	Clear Plastic Wall Switch Lockout	1/pkg	\$8.14

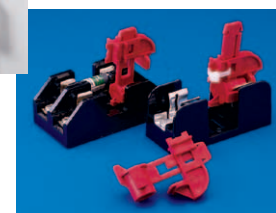


Wall Switch Lockouts

## Fuse Lockouts

- Unique locking mechanism prevents device from being accidentally removed

Part Number	Description	Qty./Pkg	Price
65750	1 3/32" Fuse Lockout	6/Pkg.	\$61.82
65751	9/16" Fuse Lockout	6/Pkg.	\$63.64



Fuse Lockouts



# Lockout Tagout Solutions



Cable lockouts - better alternative than using chain



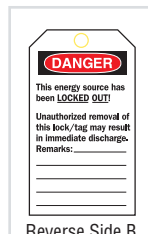
Cable lockouts - can be used to lockout electrical handles

## All Purpose Cable Lockout

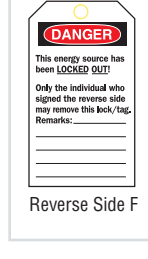
- Superior chemical, corrosion and temperature resistance properties
- Nonconductive nylon cable (1/8" diameter)
- Sheathed metal cable (3/16" diameter, vinyl coating)
- Max. Service temperature of cables:  
Sheathed Metal: -30° to 180° F  
Non-Conductive Nylon: -40° to 200° F

Part Number	Description	Price
50943	APCLO with 8' sheathed metal cable	\$47.93
50941	APCLO with 8' with non-conductive nylon cable	\$50.62

\*Replacement cables available - call for more details.



Reverse Side B



Reverse Side F

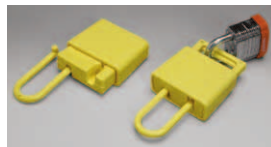
## Lockout Tags

- Choose tag and material
- Order by part number for desired reverse side legend
- Standard package: 25 tags

Part Number	Rev. Side	Heavy Duty 5 1/2" x 3" Polyester (B-837)	Economy 5 3/4" x 3" Polyester (B-851)	5 3/4" x 3" Paper Cardstock (B-853)
		\$65.50	\$39.43	\$20.19
Do Not Operate	B	65502	66050	65407
Do Not Operate	F	65535	66051	65408
Do Not Operate w/Stripe	B	65520	66063	65451
Do Not Operate w/Stripe	F	65525	66064	65452
Do Not Operate Maint.	B	65503	66053	65441
Do Not Operate Maint.	F	65521	66054	65442
Locked Out	B	65526	66066	65454
Locked Out	F	65527	66067	65455



Steel Group Lockout Hasps



Non-Conductive Group Lockout Hasps

## Steel Group Lockout Hasps

- Constructed of vinyl-coated high tensile steel w/ rest resistant plating
- Lock holes: 3/8" diameter
- Available in 1" and 1 1/2" diameter jaws
- Nonconductive Group Lockout Hasps made of strong, rigid yellow plastic resin

Part Number	Description	Qty./Pkg	Price
65375	1" Diameter Jaws	12	\$97.18
65376	1 1/2" Diameter Jaws	12	\$115.93
LH220A-YW	Nonconductive Yellow Plastic Lockout Hasp	1	\$10.98



Standard Group Lockout Boxes



Combo Group lockout with clear viewing window

## Group Lockout Boxes

- Made of heavy duty steel, powder-coated for extra rust resistance
- Lockout Box has 13 lock holes on lid, plus lockable clasp on front
- Combo Group Lockout Box has 17-34 holes in lid
- Combo Group Lockout box has lockable storage compartment and a group lockout compartment with a clear Lexan window.

Part Number	Description	Overall Size	Price
65699	Red - Standard	9"W x 3 1/2" D x 6"H	\$88.84
51171	Red - XL	7 3/8"W x 9 1/2" D x 6"H	\$98.65
105716	Combo Group Lockout Box Standard	7 1/2"W x 6"D x 12 1/2"L	\$171.74
105717	Combo Group Lockout Box Large	10 1/2"W x 9" D x 15"L	\$249.04

# Lockout Tagout Solutions

## Safety Padlocks

- Patented insulated key chamber protects workers from shocks when key is inserted
- Superior temperature, chemical and corrosion resistance
- Special 6-pin cylinder resists tampering and offers more unique key cuts
- Ships with 1 key and labels
- Lock body dimensions: 1 $\frac{3}{4}$ "H x 1 $\frac{1}{2}$ "W x  $\frac{4}{5}$ "D
- Shackle clearance: 1 $\frac{1}{2}$ "; shackle diameter:  $\frac{1}{4}$ "



Safety Padlocks

Aluminum Padlocks

Laminated Steel Padlocks

Color	1 Padlock/Package	6 Padlocks/Package
	\$13.50	\$79.41
Red	99552	51339
Blue	99556	51344
Green	99564	51345
Yellow	99570	51346
Orange	99576	51347
Black	99580	51353
Brown	103033	101956
Purple	104919	104916

\*Keyed-alike and master-keyed locks also available.

## Aluminum Padlocks

- Lightweight aluminum body with hardened chrome-plated steel shackle
- Chrome-plated cylinder delivers enhanced corrosion resistance
- Two shackle sizes: 1" and 1 $\frac{1}{2}$ " shackle diameter:  $\frac{1}{4}$ "
- Lock body: 1 $\frac{3}{5}$ "H x 1 $\frac{1}{2}$ "W x  $\frac{3}{4}$ "D

### 1" Shackle

Color	1 Padlock/Package	6 Padlocks/Package
	\$15.38	\$90.44
Red	99608	51360
Blue	99609	51361
Green	99610	51362
Yellow	99611	51363
Orange	99612	51368
Black	99613	51369
Brown	104574	104575
Purple	104572	104573

### 1 $\frac{1}{2}$ " Shackle

Color	1 Padlock/Package	6 Padlocks/Package
	\$16.49	\$96.93
Red	99615	51370
Blue	99616	51371
Green	99617	51376
Yellow	99618	51377
Orange	99619	51378
Black	99620	50274
Brown	104578	104579
Purple	104576	104577

\*Keyed-alike and master-keyed locks also available.

## Steel Padlocks

- Reinforced laminated steel withstands severe physical abuse
- 5-pin cylinder offers more unique key cuts, better tamper resistance than conventional 4-pin locks
- Two shackle sizes:  $\frac{3}{4}$ " or 2" shackle diameter:  $\frac{17}{64}$ "
- Lock body: 1 $\frac{1}{5}$ "H x 1 $\frac{19}{16}$ "W x  $\frac{7}{8}$ "D

### $\frac{3}{4}$ " Shackle

Color	1 Padlock/Package	6 Padlocks/Package
	\$12.08	\$70.99
Red	99500	51279
Blue	99504	51280
Green	99508	51281
Yellow	99512	51282
Orange	99516	51283
Black	99520	51284
Brown	101957	102696
Purple	104920	104917

### 2" Shackle

Color	1 Padlock/Package	6 Padlocks/Package
	\$15.38	\$90.44
Red	99524	51290
Blue	99528	51291
Green	99533	51292
Yellow	99539	51297
Orange	99543	51298
Black	99548	51299
Brown	101958	102698
Purple	104921	104918

\*Keyed-alike and master-keyed locks also available

## Keying And Charting Options



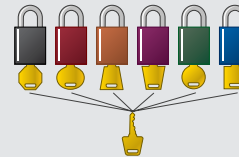
### Keyed Different

- Brady padlocks come "keyed different" when purchased from stock. This means that the key for one lock should not open another. Brady padlocks use 5- or 6-pin cylinders. Moreover, both cylinders and keys are precision-machined to exacting standards. This enables us to offer a greater number of unique keys than other locks with the same number of pins, making it highly unlikely that you will ever receive a duplicate lock.
- To guarantee that each lock is different, we can chart your locks, ensuring that each Brady padlock you receive is different from the others (see below).



### Keyed Alike

- When keyed alike, all locks in a set can be opened with the same key. This option is beneficial when multiple locks are assigned to a single employee. Remember, however, that under OSHA regulations no employee should be able to open a lock applied by someone else. Therefore, keyed alike locks from the same set should never be distributed to multiple employees.



### Master Keyed

- A master key can be used to open multiple locks that are keyed differently. This allows supervisors to easily remove a lock in the event of an emergency. In order for employees to retain exclusive control, master keys should be kept in a secure location that is accessible only to management.

### Key Charting

- Brady can track or "chart" your key codes upon request in order to simplify ordering of replacement locks and to avoid duplicates when ordering additional locks.

There is no extra charge for charting. Call for details.

# Lockout Tagout Solutions



Part #	Description	Price
105969	Pouch w/2 Keyed-Alike Padlocks	\$79.32
99290	Pouch w/2 Keyed-Different Padlocks	\$75.46

## Personal Padlock Pouch

- 2 Safety Padlocks (99552) or Steel Padlocks (99500)
- 2 Heavy Duty Lockout Tags (65520) w/ Nylon Cable Ties
- 1 Lockout Belt Pouch (51172)
- 2 1" Group Lockout Hasps (65375) - Keyed-Alike Kit only
- 1 1" Group Lockout Hasp (65375) - Keyed-Different Kit only
- 1 1.5" Group Lockout Hasp (65376) - Keyed-Different Kit only



Part #	Description	Price
105967	Breaker Lockout Pouch	\$107.03

## Personal Breaker Lockout Pouch

- 1 120/277V Clamp-On Breaker Lockout w/cleat (65396)
- 1 480/600V Clamp-On Breaker Lockout w/cleat (65397)
- 1 Universal Multipole Breaker Lockout (66321)
- 2 1" Group Lockout Hasps (65375)
- 2 Heavy Duty Lockout Tags (65520) w/ Nylon Cable Ties
- 1 Lockout Belt Pouch (51172)
- 1 Belt Pouch (51172)



Part #	Description	Price
99312	Electrical Lockout Toolbox	\$244.32

## Electrical Lockout Toolbox

- 1 Mini Cable Lockout (50940)
- 2 120V Snap-On Breaker Lockouts (65387)
- 2 120/277V Clamp-On Breaker Lockouts w/cleats (65396)
- 2 480/600V Clamp-On Breaker Lockouts w/cleats (65397)
- 2 Universal Multi-Pole Breaker Lockouts (66321)
- 2 Cleats for 120/277V Clamp-On Lockouts (65404)
- 2 Cleats for 480/600V Clamp-On Lockouts (65406)
- 1 Oversized Breaker Lockout (65329)
- 1 3-in-1 Electrical Plug Lockout (PLO23)
- 1 Wall Switch Lockout (65392)
- 1 Small Fuse Blockout (65690)
- 1 Large Fuse Blockout (65691)
- 1 Extra-Large Lockout Toolbox (LKP-TKLBOX)
- 1 Red Belt Pouch (51172)



Part #	Description	Price
99321	Valve Lockout Toolbox	\$246.06

## Valve Lockout Toolbox

- 1 Small Univ. Valve Lockout w/ Blocking Arm (50924 and 65402)
- 1 All Purpose Cable Lockout w/ 8' Sheathed Cable (50943)
- 1 1" - 6½" Adjustable Gate Valve Lockout (64057)
- 1 ¼" - 1" Ball Valve Lockout (65666)
- 1 1" - 2½" Gate Valve Lockout (65560)
- 1 Extra-Large Lockout Toolbox (LKP-TKLBOX)



Part #	Description	Price
105955	Valve & Electrical Lockout Kit	\$309.67

## Personal Valve & Electrical Lockout Kit

- 1 All Purpose Cable Lockout (50943)
- 1 1" - 6½" Adjustable Gate Valve Lockout (64057)
- 1 Plug Valve Lockout for stem dia up to 7/8" (113231 - not pictured)
- 1 Plug Valve Lockout for stem dia 9/32" - 13/8" (113232 - not pictured)
- 1 ½" - 2½" Small Ball Valve Lockout (BS07A)
- 1 3-in-1 Electrical Plug Lockout (PLO23)
- 2 120/277V Clamp-On Breaker Lockouts w/ Cleats (65396)
- 1 480/600V Clamp-On Breaker Lockout w/ Cleat (65397)
- 2 Universal Multipole Breaker Lockouts (66321)
- 3 1" Group Lockout Hasps (65375)
- 3 Heavy Duty Lockout Tags (65520) w/ Nylon Cable Ties
- 1 Medium Lockout Toolbox (105906)



Part #	Description	Price
99690	Combination Lockout Duffel	\$417.42

## Combination Lockout Duffel

- 1 Mini Cable Lockout (50940)
- 1 120V Snap-On Breaker Lockout (65387)
- 1 120/277V Clamp-On Breaker Lockout (65396)
- 1 480/600V Clamp-On Breaker Lockout (65397)
- 1 Universal Multi-Pole Breaker Lockout (66321)
- 1 Oversized Breaker Lockout (65329)
- 1 3-in-1 Electrical Plug Lockout (PLO23)
- 1 Wall Switch Lockout (65392)
- 1 Plug Valve Lockout for stem dia up to 7/8" (113231 - not pictured)
- 1 Plug Valve Lockout for stem dia 29/32" - 1 1/8" (113232 - not pictured)
- 1 1" - 6½" Adjustable Gate Valve Lockout (64057)
- 1 1" - 2½" Gate Valve Lockout (65560)
- 1 ¼" - 1" Ball Valve Lockout (65666)
- 1 Large Univ. Valve Lockout w/ Blocking Arm (50899 and 65403)
- 1 Lockout Belt Pouch (51172)
- 1 Lockout Duffel Bag (99162)



# Lockout Tagout Solutions



Part #	Description	Price
105930	Station w/10 Safety Padlocks	\$297.68
105932	Ready Access Station (Unfilled)	\$88.20

## Ready Access Padlock Station with 10 Padlocks

- 1 ReadyAccess Padlock Station (105932)
- 10 Keyed-different safety padlocks (99552) or steel padlocks (99500)
- 10 Heavy duty, re-usable lockout tags (65520) w/ nylon cable ties
- 3 1" Group Lockout Hasps (65375)
- 3 1.5" Group Lockout Hasps (65376)



Part #	Description	Price
105934	Station w/ 6 Safety Padlocks	\$399.22
105942	Ready Access Station (unfilled)	\$106.83

## Ready Access Lockout Station

- 1 Ready Access Lockout Station (105942)
- 1 Adjustable Gate Valve Lockout (64057)
- 1 All Purpose Cable Lockout (50943)
- 1 Ball Valve Lockout (BSO7A)
- 1 3-in-1 Electrical Plug Lockout (PLO23)
- 2 120/277V Clamp-On Breaker Lockouts w/cleats (65396)
- 1 480/600V Clamp-On Breaker Lockout w/cleat (65397)
- 2 Universal Multipole Breaker Lockouts (66321)
- 2 1" Group Lockout Hasps (65375)
- 1 1.5" Group Lockout Hasp (65376)
- 6 Keyed-different safety padlocks (99552) or steel padlocks (99500)
- 6 Heavy duty, re-usable lockout tags (65520) w/nylon cable ties



Part #	Description	Price
LC251M	Industrial Strength Lockout Station	\$414.85
LC252M	Cabinet Only	\$190.73

## Industrial Strength Lockout Station

- 3 Red Safety padlocks (99552)
- 3 Yellow Safety padlocks (99570)
- 1 Safety Donut - 2 1/2" - 5" (SDO4)
- 1 Safety Donut - 1" - 2 1/2" (SDO2)
- 1 Single pole breaker lockout (BLO1)
- 10 Lockout tags with ties (LT10)
- 2 Multi pole breaker lockout (BLO3)
- 1 1" Multiple lockout device (T218)
- 1 Single pole breaker lockout (BLO4)
- 1 1 1/2" Multiple lockout device (T220)
- 1 3-in-1 Electrical plug lockout (PLO23)
- 1 Small plug lockout (PLO21)



Part #	Description	Price
3001	Safety Lockout Center	\$296.37
3002	Bilingual Safety Lockout Center	\$299.31

## Safety Lockout Center

(3001) Components:

- 6 Multi-color steel padlocks
- 2 10 pack lockout tags with ties (LT10)
- 5 1 1/2" multiple lockout devices (T220)
- 1 25 pack Lockout Safety booklets (2112X)

(3002) Components:

- 6 Multi-color padlocks
- 2 10 pack Bilingual lockout tags with ties (TG400B-10)
- 5 1 1/2" multiple lockout devices (T220)
- 15 English Lockout Safety booklets (2112X)
- 10 Spanish Lockout Safety booklets (2112SPX)



5-Lock Board



10-Lock Board

Part #	Description	Price
51181	5-Lock Board (Filled)	\$210.41
50989	5-Lock Board (Board Only)	\$96.72
51187	10-Lock Board (Filled)	\$302.26
50990	10-Lock Board (Board Only)	\$120.90
51189	20-Lock Board (Filled)	\$518.81
50991	20-Lock Board (Board Only)	\$181.38



20-Lock Board

## Lock Boards

5-Lock Board (51181) includes:

- 1 11 1/2"H x 15 1/2"W Lock Board
- 5 Padlocks (99552 or 99500)
- 1 1" metal hasp (65375)
- 1 1 1/2" metal hasp (65376)
- 12 Heavy duty tags (65520)

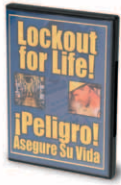
10-Lock Board (51187) includes:

- 1 13 1/2"H x 13 1/2"W Lock Board
- 10 Padlocks (99552 or 99500)
- 2 1" hasps (65375)
- 1 1 1/2" hasps (65376)
- 12 Heavy duty tags (65520)

20-Lock Board (51189) includes:

- 1 23 1/2"H x 11 1/2"W Lock Board
- 20 padlocks (99552 or 99500)
- 2 1" hasps (65375)
- 2 1 1/2" hasps (65376)
- 24 Heavy duty tags (65520)

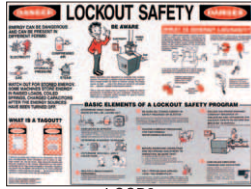
# Lockout Tagout Solutions



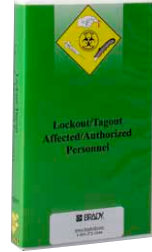
66255



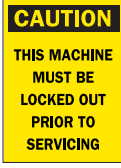
66219



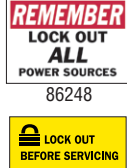
LOSP8



66009



22931



86248



88302



SF647E

## LOTO Employee Training & Awareness Tools

Part #	Description	Price
51793	Lockout For Life DVD (English & Spanish) w/10 booklets (English)	\$637.55
66219	Lockout Tagout Handbooks (English) 10/pkg	\$29.08
63004	Lockout Tagout Handbooks (Spanish) 10/pkg	\$29.08
LOSP8	Lockout Safety Poster (English)	\$25.89
LOSP8SP	Lockout Safety Poster (Spanish)	\$25.89
66009	Magnetic Danger-Equipment Being Serviced Sign	\$15.27
22931	Fiberglass Caution-Lock Out For Safety Sign	\$9.81
88302	B-302 Lock Out Before Servicing 2¼ x 4½ sign	\$1.58
86248	B-302 Remember-Lock Out All 3½ x 5 sign 5/pkg	\$10.93
SF647E	Lockout / Tagout Floor Stand	\$28.71

## LOTO for Authorized & Affected Personnel

- Provides a comprehensive introduction to the key components of an effective LOTO program
- Comes with reproducible quiz and certificate
- Run time: 17 minutes (VHS video format)
- Spanish language video also available (quiz and certificate in English only)

Part #	Description	Price
LOPDESK1001	Lockout Pro Desktop Software	\$795.00



### OSHA'S REQUIREMENT:

[OSHA CFR 1910.147 The Control of Hazardous Energy].  
1910.147(c)(4) synopsis:  
Machine-specific lockout / tagout procedures are required for equipment having more than one energy source, as well as for much equipment having a single energy source.

### Brady Graphical Lockout Procedure Service:

Complete compliance with OSHA featuring worker-friendly, visually-instructive procedures that reduce the time to safely lock out equipment. Brady project engineers will come to your facility and:

- Perform a Zero Energy State Assessment
- Develop Graphical Lockout Procedures
- Install Lockout Procedures
- Create and Install Energy Source Tags
- Provide for Easy Maintenance of the Lockout Program



## Lockout Pro™ Graphical Procedure Writing Software

- Use Lockout PRO software's built-in sample energy control policy to develop your own comprehensive energy control program
- Create machine-specific lockout procedures for different locations; ensure that location-specific safety needs are addressed
- Access current OSHA lockout/tagout standard with a few clicks

Part #	Description	Price
51454	LOTO For Authorized & Affected Personnel (English)	\$225.39

USA  
Customer Service: 1-888-272-3946  
Inside Sales: 1-888-311-0775  
www.BradyID.com

Canada  
Customer Service: 1-800-263-6179  
www.BradyCanada.ca

Mexico  
Customer Service: 1-800-262-7777  
Inside Sales: 1-800-262-7777 ext 177  
www.BradyLatinAmerica.com

For more information, please visit  
[www.BradyID.com](http://www.BradyID.com) or call 1-888-272-3946