



3-In-1 Electrical Plug Lockout

- Accommodates high and low-voltage plugs up to 3" in diameter and 5-1/2" in length
- 2 sliding top lids can be used individually or together to accommodate small, medium and large-diameter cords up to 1-1/4"
- Made of bright yellow thermoplastic
- Visual label supplied in English/Spanish bilingual format

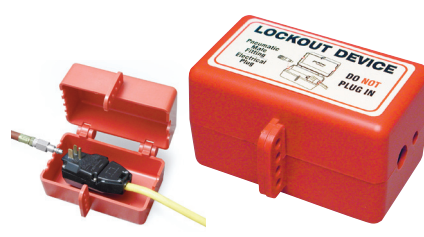
Catalog #	Type
PL023	3-in-1 Plug Lockout



Brady Electrical Plug Lockouts

- Plug lockouts prevent electrical plugs from being inserted into a wall outlet. Use when plug will not remain under the exclusive control of the person performing service or maintenance
- Made of rugged polypropylene
- Small 110V plug lockout: 2"H x 2"D x 3-1/2"W with 1/2" diameter hole for cable
- Large 220/500V plug lockout: 3-1/4"H x 3-1/4"D x 7"W with 1" diameter hole for cable

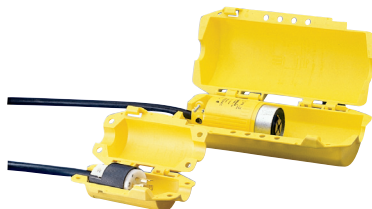
Catalog #	Type
65674	Small 110V Plugout
65675	Large 220/500V Plugout



Electrical/Pneumatic Plug Lockout

- Accommodates a large variety of electrical plugs up to 3-1/2" in diameter and 5" in length as well as male air hose connectors
- Holes accommodate electrical cord or "necked down" pneumatic male fittings commonly attached to compressed air hose
- Works on 110V, 220V & 550V plugs
- Made of Polystyrene material

Catalog #	Type
PL027E	Electrical/Pneumatic Plug Lockout



Hubbell Plugout™

- Two sizes available to fit most heavy industrial plug applications
- Small version accepts plugs with maximum 2-3/4" diameter and 4-3/4" length with 1" cord
- Large version accepts plugs with max 4-1/2" diameter and 10-3/20" length with 19/20" cord

Catalog #	Type
65695	Small Plugout™
65968	Large Plugout™

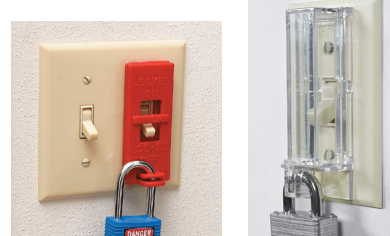


Stoppower™ Plug Lockouts

- Ideal for office equipment and other frequently locked out cords
- For use on 2 or 3 pronged polarized plugs
- Cord cannot be plugged in with Stoppower™ in place
- Device cannot be removed without a key

Catalog #	Type	Qty.
65673	Red Stoppower Plug	1

To order multiple Stoppower Plug Lockouts that are keyed alike, use catalog #98209



Wall Switch Lockouts

- Use with most wall-mounted switches
- Easy to install using existing screws
- 65392 & 65696 come in a high visibility red color and can lock switch in "on" or "off" position
- WSLO feature a patented non-hinge design and are made of strong, clean polycarbonate

Catalog #	Description	Qty.
65392	Red Wall Switch Lockout	1
65696	Red Wall Switch Lockout	6
WSLO	Clear Wall Switch Lockout	1

*Padlock not included



Electrical Lockout Kits

Brady's Electrical Lockout Tagout Kits include an array of hasps, clamp-on breaker lockouts, tags mini cable lockouts and much more.

For more information view page 394 or visit www.BradyID.com.

