

Signal-Quick® Sensor Mounting Accessories

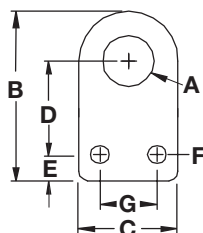
Flat and Right Angle Adjustable Brackets



Sensor Mounting Brackets

Eliminate design time and fabrication expense. Choose the Hubbell Angle Bracket or Flat Bracket to mount any tubular proximity sensor.

- Fixed mounting patterns or multi-slotted for positioning versatility.
- Industry standard mounting footprints.
- Rapid installation.
- Immediately available from stock.
- Cost savings over "make your own".

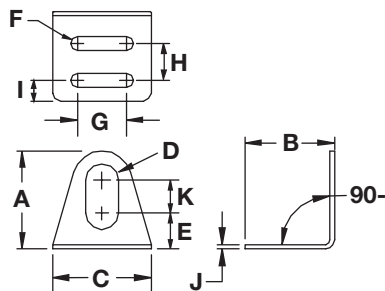


Flat Brackets

Catalog Number	A	B	C	D	E	F	G	Thickness
FB12	0.48" (12.1)	1.95" (49.6)	1.25" (31.8)	0.86" (21.8)	0.47" (11.9)	0.22" (5.54)	0.75" (19.1)	0.12" (3.02)
FB18	0.72" (18.2)	2.27" (57.6)	1.38" (34.9)	1.36" (34.6)	0.22" (5.56)	0.24" (6.05)	1.0" (25.4)	0.12" (3.02)
FB30	1.19" (30.1)	3.42" (86.9)	2.0" (50.8)	2.05" (52)	0.37" (9.40)	0.31" (7.94)	1.25" (31.8)	0.12" (3.02)

Material Specifications

Material: Stainless Steel

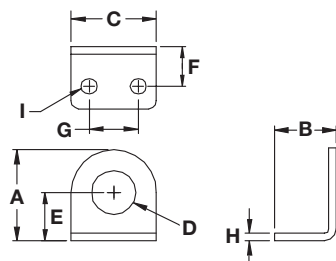


Adjustable Angle Brackets

Catalog Number	A	B	C	D	E	F	G	H	I	J	K
AAB08	1.0" (25.4)	1.25" (31.8)	1.25" (31.8)	0.34" (8.74)	0.31" (7.92)	0.22" (5.54)	0.62" (15.9)	0.46" (11.9)	0.28" (7.14)	0.07" (1.78)	0.38" (9.53)
AAB12	1.5" (38.1)	1.37" (34.8)	1.5" (38.1)	0.50" (12.7)	0.55" (13.9)	0.22" (5.54)	0.75" (19.1)	0.56" (14.3)	0.31" (7.92)	0.07" (1.78)	0.50" (12.7)
AAB18	2.0" (50.8)	1.37" (34.8)	1.75" (44.5)	0.72" (18.3)	0.75" (19.1)	0.22" (5.54)	1.0" (25.4)	0.56" (14.3)	0.31" (7.92)	0.07" (1.78)	0.63" (15.9)
AAB22	2.0" (50.8)	1.37" (34.8)	1.75" (44.5)	0.88" (22.2)	0.69" (17.4)	0.22" (5.54)	1.0" (25.4)	0.56" (14.3)	0.31" (7.92)	0.07" (1.78)	0.63" (15.9)
AAB30	2.5" (63.5)	1.75" (44.5)	2.25" (57.2)	1.19" (30.1)	0.91" (23)	0.28" (7.11)	1.37" (34.8)	0.81" (20.6)	0.41" (10.3)	0.09" (2.29)	0.75" (19.1)

Material Specifications

Material: Stainless steel
Zinc-plated steel (AAB47)



Angle Brackets

Catalog Number	A	B	C	D	E	F	G	H	I
AB12	1.16" (29.3)	1.0" (25.4)	1.25" (31.8)	0.48" (12.1)	0.53" (13.5)	0.53" (13.5)	0.75" (19.1)	0.12" (3.02)	0.22" (5.6)
AB18	1.47" (37.3)	1.0" (25.4)	1.38" (34.9)	0.48" (12.1)	0.53" (13.5)	0.78" (19.8)	1.0" (25.4)	0.12" (3.02)	0.24" (6.0)
AB30	2.13" (54.0)	1.50" (38.1)	2.00" (50.8)	1.19" (30.1)	1.13" (28.7)	1.13" (28.7)	1.25" (31.8)	0.12" (3.02)	0.31" (7.9)

Material Specifications

Material: Stainless Steel

Dimensions in Inches (mm)