

Floor Boxes

Hubbell SystemOne Metal and Non-Metallic Concrete Floor Boxes



Hubbell SystemOne Cast Iron Floor Box – S1CFB



Non-Metallic riser.

The Cast Iron Floor Box construction provides durability and corrosion resistance for on-grade applications.

Oversized 1½ in. N.P.T. threaded conduit access holes for low voltage.

One inch N.P.T. threaded conduit access holes for power.

Hubbell SystemOne Steel Floor Box – S1SFB

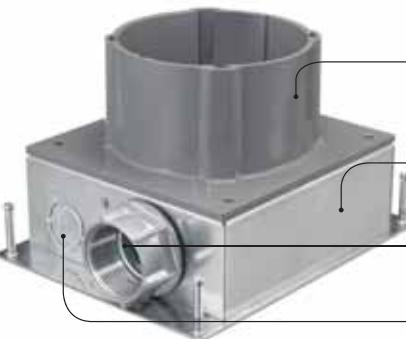


Non-Metallic riser.

The Stamped Steel Floor Box construction provides an economic solution for above-grade applications.

Concentric knockouts permit various conduit sizes for both power and data services.

Hubbell SystemOne Steel A/V Floor Box – S1SFBAV



Non-Metallic riser.

Accommodates high-capacity multi-media applications in a 3½ in. minimum depth of pour.

Oversized 1½ in. N.P.T. threaded data hub.

¾ in., 1 in. trade size concentric knockouts for power services.

Hubbell SystemOne Non-Metallic Floor Box – S1PFB



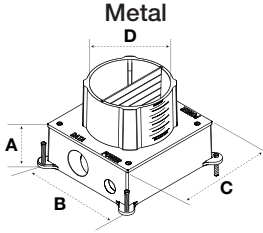
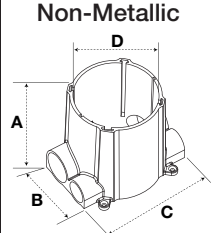




High-strength rigid PVC construction that is non-corrosive.

Oversized 1½ in. data conduit hub for increased cable capacity and bend radius.

Parallel conduit hubs reduce labor and material cost, facilitating easier wire pull.

- Easily installed, aesthetic and configurable floor box solution for open floor plans that require both power and data services.
- The Hubbell SystemOne Universal Cover mounts directly to the floor box riser, eliminating the need for an additional adapter collar.
- The Hubbell SystemOne Universal Cover features ScrubShield™ technology that exceeds UL514A and UL514C scrub water exclusion requirements.
- Convenient cubic inch (cm³) capacity markings on interior of box.
- Leveling feet provide before pour adjustability.
- PVC riser allows a simple saw cut for adjustment after pour.
- Supplied with concrete cover and closure plugs (where applicable).
- Designed to accommodate multi-service applications with the wide offering of Hubbell SystemOne Sub-Plates.
- US LISTED, Metallic Floor Box.

- Provides an economical, easy to install in-floor delivery system for large, open plan spaces.
- The Hubbell SystemOne Universal Cover mounts directly to the floor box, eliminating the need for additional adapter collar.
- Supplied with concrete cover, conduit reducers and conduit hub plugs.
- US LISTED, Non-Metallic Floor Box.

Dimensions Inches (mm)	Cast Iron	Steel	Steel A/V	Non-Metallic	
		 <p>S1CFB*</p>	 <p>S1SFB*</p>	 <p>S1SFBAV*</p>	 <p>S1PFB</p>
Min. Depth of Pour	3.50" (88.9)	3.50" (88.9)	3.50" (88.9)	3.00" (76.2)	
Adjustability	Fully	Fully	Fully	Fully	
Cubic Inch (cm³) Capacity	156.0 cu. in. (2556.4 cm ³)	175.7 cu. in. (2879.2 cm ³)	177.5 cu. in. (2909.7 cm ³)	100 cu. in. (1638.7 cm ³)	
Dimensions – A	3.00" (76.2)	3.00" (76.2)	3.00" (76.2)	6.00" (152.4)	
Dimensions – B	7.26" (184.4)	7.50" (190.5)	7.50" (190.5)	5.58" (141.7)	
Dimensions – C	7.45" (189.2)	7.38" (187.4)	7.38" (187.4)	8.76" (222.5)	
Dimensions – D (Inside Diameter)	5.00" (127.0)	5.00" (127.0)	5.00" (127.0)	5.00" (127.0)	
Power Entries	1" N.P.T. Access Holes	¾", 1" Concentric KO	¾", 1" Concentric KO	1" Conduit Hub	
Data Entries	1½" N.P.T. Access Holes	¾", 1", 1 ¼" Concentric KO	1½" Threaded Hub (included)	1½" Conduit Hub	
Concrete Cover Included	✓	✓	✓	✓	
Closure Plugs Included	✓	–	✓	✓	
Accepts Hubbell SystemOne Universal Cover	✓	✓	✓	✓	
Cover Mounting Clips Included	✓	✓	✓	✓	
Non-Metallic Low Voltage Divider Included (S1DIV1)	✓	✓	✓	✓	

Notes: UL File Number E92074.

CSA File Number LR18416.

*S1CFB, S1SFB, S1SFBAV are approved for use in the City of Chicago.

Hubbell SystemOne Universal Covers

Universal Carpet Flange and Cover Assembly

- Cast aluminum construction.
- Durable powder coat finish.

Catalog Numbers	Color
S1CFCAL	Aluminum
S1FCBRS	Brass
S1FCBBL	Black
S1FCGY	Gray
S1FCI	Ivory



8.00" Dia.

Universal Tile Flange and Cover Assembly

- Cast aluminum construction.
- Durable powder coat finish.

Catalog Numbers	Color
S1TFCAL	Aluminum
S1TFCBRS	Brass
S1TFCBL	Black
S1TFCGY	Gray
S1TFCI	Ivory



5.62" Dia.

Aluminum Finish



Brass Finish



Black Finish



Gray Finish



Ivory Finish

