

Pin and Sleeve Unfused CIRCUIT-LOCK® Ordering Information

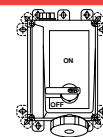
30, 60 and 100 Ampere – North American Ratings

32 Ampere – International Rating

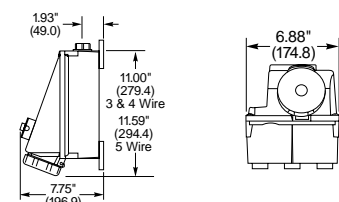
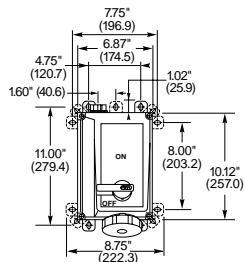
UL Listed, CSA Certified to Type 4,
4X, & Type 12 Enclosure Rating



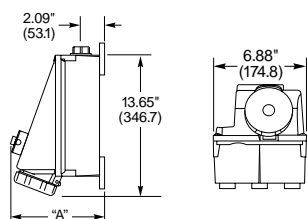
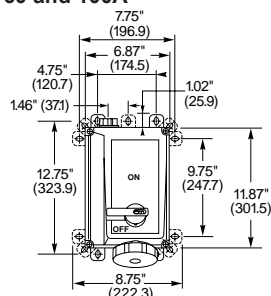
IP67
SUITABILITY



Dimensions 30 and 32A



60 and 100A



Rating	"A" Dimension	Hub Size
30A	7.75" (196.9)	1" NPT
60A	8.60" (218.4)	1 1/4" NPT
100A	9.30" (236.2)	1 1/4" NPT

Watertight Closure Plug Kits

Description **Catalog Numbers**
 For 30A Circuit-Lock unfused and fused Pin & Sleeve mechanical interlock. **MICPK30**

For 60A and 100A Circuit-Lock unfused and fused Pin & Sleeve mechanical interlock. **MICPK60**

Ground Block

For 30A switches. **HBL30RGB**
 For 60 & 100A switches **HBL60100RGB**

Neutral Block

For 30A switches. **HBL30RNB**
 For 60 & 100A switches **HBL60100RNB**

Amps	Poles and Wires	Configuration		Voltage	Mechanical Interlock	
		Recep./ Conn.	Plug/ Inlet			
30	2P 3W			120	HBL330MI4W	
	2P 3W			240	HBL330MI6W	
	2P 3W			480	HBL330MI7W	
	3P 4W			120/240	HBL430MI12W	
	3P 4W			3Ø240	HBL430MI9W	
	3P 4W			3Ø480	HBL430MI7W	
	3P 4W			3Ø600	HBL430MI5W	
	4P 5W			3Ø Y 120/208	HBL530MI9W	
	4P 5W			3Ø Y 277/480	HBL530MI7W	
	4P 5W			3Ø Y 347/600	HBL530MI5W	
	32	3P 4W			380 50HZ-440 60Hz	HBL432MI3W
	60	2P 3W			120	HBL360MI4W
2P 3W				240	HBL360MI6W	
2P 3W				480	HBL360MI7W	
3P 4W				120/240	HBL460MI12W	
3P 4W				3Ø240	HBL460MI9W	
3P 4W				3Ø480	HBL460MI7W	
3P 4W				3Ø600	HBL460MI5W	
4P 5W				3Ø Y 120/208	HBL560MI9W	
4P 5W				3Ø Y 277/480	HBL560MI7W	
4P 5W				3Ø Y 347/600	HBL560MI5W	
100		2P 3W			240	HBL3100MI6W
		3P 4W			3Ø240	HBL4100MI9W
	3P 4W			3Ø480	HBL4100MI7W	
	3P 4W			3Ø600	HBL4100MI5W	
	4P 5W			3Ø Y 120/208	HBL5100MI9W	

Auxiliary Contacts for 30, 60 & 100A switch, A600 pilot duty.

Break after break.	HBLAC1
Break before break.	HBLAC2

Replacement Switches

For 30A switches.	HBL30MIRS
For 60 & 100A switches	HBLDS60100RS

Note: 30A- 1" NPT hub, 60 & 100A- 1 1/4" NPT hub.

