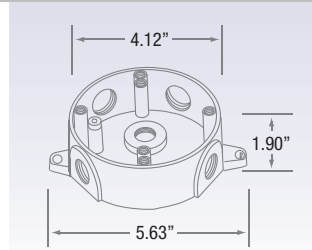
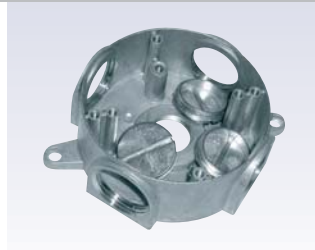


ZINC BOXES - Round *Original RAB® zinc products are ideal for use in indoor/outdoor, commercial/industrial applications.*

1/2VXJ
3/4VXJ
1VXJ

1/2VXJ/C
3/4VXJ/C
1VXJ/C

Dimensions



CAST BOX	INTERNAL MOUNTING	COVER	ENTRIES	HARDWARE	GASKET	FINISH
Precision die-cast ZINC, 4" diameter and 1-9/16" deep. Each unit has two opposing mounting feet.	There are 4 internal posts for mounting covers, 90° apart. Two additional posts 180° apart for universal cross bars. One post for ground wire screw plus all posts are 10-24 tapped.	Stamped aluminum.	5 conduit entries, four on the side, threaded, available as 1/2, 3/4 and 1". Bottom conduit entry is 1/2" for the 1/2VXJC and 3/4" for both the 3/4VXJC AND 1VXJC.	Each unit comes complete with three plugs threaded to match side conduit entries and one ground screw packaged inside each unit.	Cork gasket.	Standard unit is raw ZINC. Powder coat painted units are available upon request in the following finishes, black, white and bronze.

ZINC COVERS - Round

DECORATIVE BLANK COVERS

C100 / XC-2

C103

5" COVER (1 hole)

5" COVER (2 holes)



- Die cast ZINC with one opening (1/2" C100, 3/4" XC-2) and a cork gasket.



- Die cast ZINC with 3 openings (1/2") and a cork gasket.



- Stamped covers with a white paint finish. The 1 Hole cover comes with mounting hardware.



ORDERING INFO example: 1/2VXJ-R

SERIES	DESCRIPTION	ENTRIES	#PLUGS	COVER	GASKET	SCREWS	FINISH
1/2VXJ	1/2" Zinc Junction Box With Cover	5	3	Included	Included	Zinc Plated	<input type="checkbox"/> Raw Zinc Standard <input type="checkbox"/> B Black <input type="checkbox"/> R Bronze <input type="checkbox"/> W White
3/4VXJ	3/4" Zinc Junction Box With Cover						
1/2VXJ/C	1/2" Zinc Junction Box No Cover	5	3	-	Included	Zinc Plated	<input type="checkbox"/> Raw Zinc Standard
3/4VXJ/C	3/4" Zinc Junction Box No Cover						
1VXJ	1" Zinc Junction Box With Cover	5	3	Included	Included	Zinc Plated	<input type="checkbox"/> Raw Zinc Standard
1VXJ/C	1" Zinc Junction Box No Cover	5	3	-	Included	Zinc Plated	<input type="checkbox"/> Raw Zinc Standard
C100	1/2" Zinc Cover	1	-	-	Included	-	<input type="checkbox"/> Raw Zinc Standard <input type="checkbox"/> B Black <input type="checkbox"/> R Bronze <input type="checkbox"/> W White
C103	1/2" Zinc Cover	3	1	-	Included	-	<input type="checkbox"/> Raw Zinc Standard <input type="checkbox"/> B Black <input type="checkbox"/> R Bronze <input type="checkbox"/> W White
XC-2	3/4" Zinc Cover	1	-	-	Included	-	<input type="checkbox"/> Raw Zinc Standard <input type="checkbox"/> B Black <input type="checkbox"/> R Bronze <input type="checkbox"/> W White
5" Cover (1hole)	5" Blank White Cover With Hardware	-	-	5"	-	-	<input type="checkbox"/> White Standard
5" Cover (2 holes)	5" Blank White Cover	-	-	5"	-	Zinc Plated	<input type="checkbox"/> White Standard

