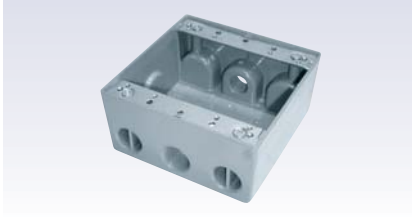
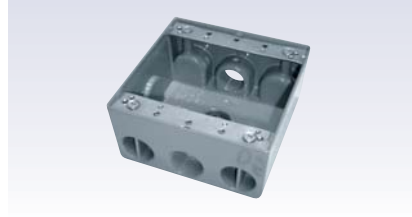


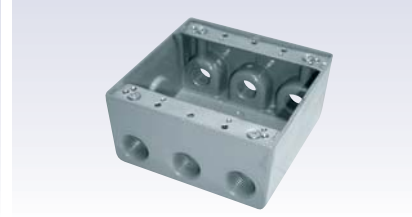
D5313



D5333



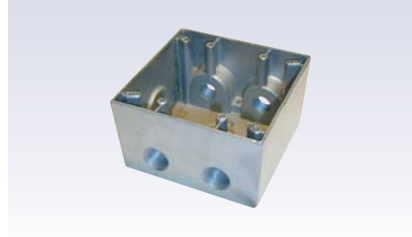
D5317



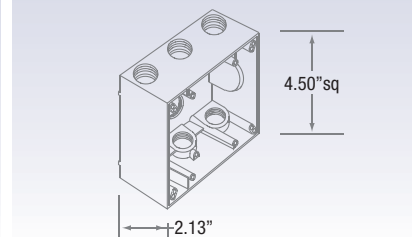
D5337



DDB252P(deep)



Dimensions

**CAST BOX**

Precision die-cast aluminum with 3 - 7 open entry holes.

MOUNTING TABS

Stamped galvanized metal. Tabs held in place with two screws for ease of removing.

GROUND SCREW

Green galvanized metal screw included.

CLOSE-UP PLUGS

Two/four spare close-up plugs are included.

FINISH

Durable, silver grey powder coat paint finish.

Extension Ring / Cover**Rectangular 3 Gang**

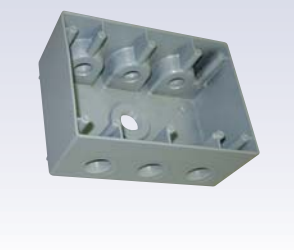
DXR-2



FS-2C



DDB273



DDB373

**ORDERING INFO** example: D5313

SERIES	DESCRIPTION	ENTRIES	# PLUGS	SIZE	GASKET	FINISH
D5313	1/2" Cast Aluminum Junction Box	3	2	1/2"	Included	Silver Grey Standard
D5333	3/4" Cast Aluminum Junction Box	3	2	3/4"	Included	Silver Grey Standard
D5317	1/2" Cast Aluminum Junction Box	7	2	1/2"	Included	Silver Grey Standard
D5337	3/4" Cast Aluminum Junction Box	7	2	3/4"	Included	Silver Grey Standard
DDB252P	1/2" Cast Aluminum Junction Deep Box	5	2	1/2"	Included	Silver Grey Standard
DXR-2	Cast Aluminum Extension Ring	-	-	1" Deep	Included	Silver Grey Standard
FS-2C	2 Gang Stamped Aluminum Cover Plate	-	-	-	Included	Silver Grey Standard
DDB273	3 Gang, 1/2" Cast Aluminum Deep Box	7	2	1/2"	Included	Silver Grey Standard
DDB373	3 Gang, 3/4" Cast Aluminum Deep Box	7	2	3/4"	Included	Silver Grey Standard