

## ALUMINUM BOXES - Round

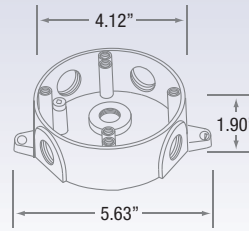
Ideal for use in indoor/outdoor, commercial and industrial applications.

1/2DVXJ/C  
3/4DVXJ/C

1/2DVXJ/LC  
3/4DVXJ/LC

Dimensions

DEX-5



CAST BOX      INTERNAL MOUNTING      COVER      ENTRIES      HARDWARE      GASKET      FINISH

Precision die-cast aluminum, 4" diameter and 1-9/16" deep. Each unit has two opposing mounting feet.

There are 4 internal posts for mounting covers, 90° apart. Two additional posts 180° apart for universal cross bars. One post for ground wire screw plus all posts are 10-24 tapped.

Stamped aluminum installed with two brass screws.

5 conduit entries, four on the side, one on the bottom, threaded, available as 1/2" or 3/4".

Each unit comes complete with four plugs installed, threaded to match side conduit entries and one ground screw installed.

Neoprene.

Standard unit is a sand blasted aluminum finish. Some boxes and covers are also available with a powder coat paint finish.

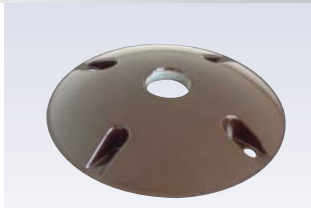
## ALUMINUM COVERS - Round

DC100

DC103

XCS

Universal Mounting Cover  
CR-3



- Die cast aluminum cover with 1 (DC100) or 3 (DC103) 1/2" openings with 2 brass screws and a neoprene gasket.
- One installed plug included with DC103

- Stamped aluminum cover with a cork gasket.

- Die cast aluminum with 3 1/2" openings, 1 close out plug, neoprene gasket and screws.

## ORDERING INFO example: 1/2DVXJ/C-B

SERIES	DESCRIPTION	ENTRIES	#PLUGS	COVER	GASKET	SCREWS	FINISH								
1/2DVXJ/C	1/2" Cast Aluminum Junction Box With Cover	5	4	Included	Included	Brass	<table border="0"> <tr><td>■</td><td>Aluminum Standard</td></tr> <tr><td>■</td><td>B Black</td></tr> <tr><td>■</td><td>R Bronze</td></tr> <tr><td>■</td><td>W White</td></tr> </table>	■	Aluminum Standard	■	B Black	■	R Bronze	■	W White
■	Aluminum Standard														
■	B Black														
■	R Bronze														
■	W White														
1/2DVXJ/LC	1/2" Cast Aluminum Junction Box No Cover	5	4	-	Included	Brass	<table border="0"> <tr><td>■</td><td>Aluminum Standard</td></tr> </table>	■	Aluminum Standard						
■	Aluminum Standard														
3/4DVXJ/C	3/4" Cast Aluminum Junction Box With Cover	5	4	Included	Included	Brass	<table border="0"> <tr><td>■</td><td>Aluminum Standard</td></tr> </table>	■	Aluminum Standard						
■	Aluminum Standard														
3/4DVXJ/LC	3/4" Cast Aluminum Junction Box No Cover	5	4	-	Included	Brass	<table border="0"> <tr><td>■</td><td>Aluminum Standard</td></tr> </table>	■	Aluminum Standard						
■	Aluminum Standard														
DEX-5	1/2" Extension Ring For Outlet Boxes	4	4	-	-	-	<table border="0"> <tr><td>■</td><td>Aluminum Standard</td></tr> </table>	■	Aluminum Standard						
■	Aluminum Standard														
DC100	Round Cover With One 1/2" Centre Hole	1	-	4"	Included	Brass	<table border="0"> <tr><td>■</td><td>Silver Grey Standard</td></tr> <tr><td>■</td><td>B Black</td></tr> <tr><td>■</td><td>R Bronze</td></tr> <tr><td>■</td><td>W White</td></tr> </table>	■	Silver Grey Standard	■	B Black	■	R Bronze	■	W White
■	Silver Grey Standard														
■	B Black														
■	R Bronze														
■	W White														
DC103	Round Cover With Three 1/2" Holes	3	1	4"	Included	Brass	<table border="0"> <tr><td>■</td><td>Silver Grey Standard</td></tr> <tr><td>■</td><td>B Black</td></tr> <tr><td>■</td><td>R Bronze</td></tr> <tr><td>■</td><td>W White</td></tr> </table>	■	Silver Grey Standard	■	B Black	■	R Bronze	■	W White
■	Silver Grey Standard														
■	B Black														
■	R Bronze														
■	W White														
XCS	Stamped Aluminum Cover	-	-	-	Included	-	<table border="0"> <tr><td>■</td><td>Aluminum Standard</td></tr> </table>	■	Aluminum Standard						
■	Aluminum Standard														
CR-3	1/2" Universal Mounting Plate	3	1	4"	Included	-	<table border="0"> <tr><td>■</td><td>Silver Grey Standard</td></tr> <tr><td>■</td><td>B Black</td></tr> <tr><td>■</td><td>R Bronze</td></tr> <tr><td>■</td><td>W White</td></tr> </table>	■	Silver Grey Standard	■	B Black	■	R Bronze	■	W White
■	Silver Grey Standard														
■	B Black														
■	R Bronze														
■	W White														

