



JUNCTION BOXES



Class I, Div. 1 & 2, Groups B^①, C, D
Class I, Zones 1 & 2, Groups IIB+H₂, IIA
Class II, Div. 1 & 2, Groups E, F, G
Class III, Div. 1 & 2 ENCL. Type 3, 4, & 4X^②
CENELEC/ATEX/IEC Ex Ex d IIB + H2 T5 or T6
Ex tD A21 IP66
Tamb ≤ + 60°C

ATEX / IEC Ex Certified

UL #UL886 - Outlet Boxes and Fittings for use in Hazardous (Classified) Locations. File #E10514

UL #UL698 & #UL1203 - Explosion Proof and Dust Ignition Proof Electrical Equipment. Files #E83969 & E12379

SR #C22.2 No. 30-M1986 -Explosion Proof Enclosure for use in Class I Hazardous Locations. FILE #LR11716

II 2 GD **CE** 0518

PTB 07 ATEX 1025U (Empty Housing)

PTB 07 ATEX 1024 (Enclosure with Controls)

IEC Ex 07.0022U

IEC Ex 07.0023



FEATURES-SPECIFICATIONS

QUANTUM[®]

Applications

- Locations made hazardous due to the presence of flammable gases or vapors, combustible dust, or easily ignitable fibers and flyings, and areas which are subject to corrosion, weather and dampness
- Petroleum Refineries, Chemical and Petrochemical plants with indoor and outdoor processes
- Applications requiring junction, pull and/or splices boxes
- Enclosure to house control stations, meters, relays, starters, circuit breakers, terminal blocks and other equipment or devices

• **Global applications (ATEX/IEC Ex) Enclosures are available for global applications with "CEN" suffix. Assemblies that are modified to ATEX IEC Ex standards maintain their North American certifications.**

- Enclosures are available blank or with factory modifications, options and accessories. See catalog pages E40-E45 for additional details

Features

- Copper-Free Cast Aluminum Construction. High strength, lighter in weight, corrosion resistant
- Fewer Cover Bolts. Computer-aided design lessens the number of cover bolts by eliminating corner bolts. Reduces installation and maintenance time
- Gasketed Flange. Nitrile (BUNA-N) "O" ring gasket is located inside bolt circle to prevent water seeping into enclosure
- Ductile Mounting Lugs. Lugs are made of ductile aluminum alloy to adjust to irregular mounting surfaces without damaging enclosure. Enclosure size 8x12x6 and larger furnished with bi-directional mounting lugs which may be positioned either vertically or horizontally to facilitate mounting
- Hinges. All enclosure sizes 8x12x6 and larger are supplied as standard with hinges mounted on the left side. Smaller enclosures are drilled for field installation of two Killark HINGE-9 assemblies or can be installed at factory by adding SU2 to catalog number. For hinges to be located in other positions, specify when ordering
- Recessed Flange Notches. Flanges are notched to allow for easier cover opening with prying instrument without flange

damage

- Enclosures are cast with wall thickness suitable for drilling and tapping of conduit openings in all sides and back of boxes. Conduit size and location information is found on dimensional chart in this section. Conduit openings can be factory or field installed
- Mounting pan bosses are pre-drilled at factory for field mounting of optional mounting pan

Material/Finish

- Enclosure: Copper-free aluminum (less than 4/10 of 1%)
- Hinges: Aluminum with stainless steel hardware
- Steel Cover Bolts
- Optional Mounting Pans: Sheet aluminum
- Optional Windows: Tempered soda lime glass
- Aluminum Lacquer Paint Finish Standard

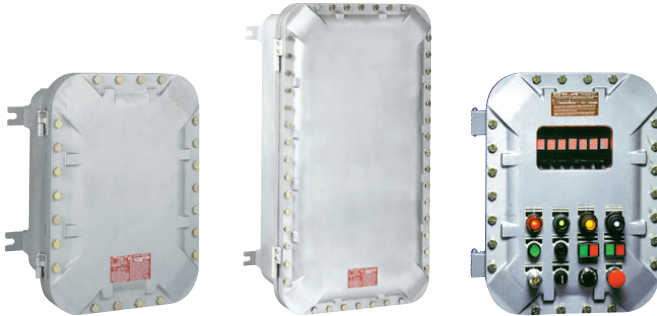
^① Conduits must be sealed within 18" for Group B applications.

^② Type 4X and NEMA 4X with optional SU-1 modification.



ENCLOSURES

JUNCTION BOXES



See page E33 for area classification and certification information

FEATURES-SPECIFICATIONS

| MODIFICATIONS | |
|-----------------------|---|
| SUFFIX NUMBER | DESCRIPTION |
| KIT-251 | 100 amp ground lug |
| KIT-252 | 225 amp ground lug |
| SU3-ATEX ^① | ATEX IECEx Drain & breather installed. Groups B & Ex d IIB+H2 |
| SU3B-4X | Type 4X drain D & breather installed Group B, C, D Type 4X |
| SU2 | Install hinges (8x10 and smaller enclosures) |
| SU9 | Special paint finish |
| SU14 | Fungus proofing of enclosures |
| SU93 | Do not paint enclosures |
| SU1 | Stainless steel external hardware for Type 4X |
| TOE PLATE KIT | Door guide plate to assist in aligning installing cover bolts |

^① The installation of a SU3-ATEX will void the TYPE 4-4X and IP66 ratings of enclosure.

Hinges

Hinges are provided standard on EXB 6x12x4 box and on sizes 8x12x6 and larger. Smaller size EXB boxes are factory drilled for field installation of (2) HINGE-12L on left side.

For replacement hinges use HINGE-11L for enclosures size 8x12x6 through 16x24x10. HINGE-10L is for use with box size 18x24x8 and larger. (See page E41 for hinge information.)

Order Mounting pan as separate item and specify if factory or field installed.

† Maximum number of "G" series control operators permitted in cover, down + across = total. See Controls section when selecting "G" Series control operators.

Note: For Group B applications all conduit openings must be sealed within 18" of enclosures.

^② Not ATEX approved

^③ cCSAus only

| EXB JUNCTION BOXES AND ENCLOSURES | | | | | |
|---|---|----------------------|------------------------------|------------------------------|------------------|
| CATALOG NUMBER | NOMINAL ENCLOSURE INSIDE DIMENSIONS W" L" D" (MM) | MAXIMUM CONDUIT SIZE | OPTIONAL MOUNTING PAN NUMBER | MAXIMUM NUMBER OF OPERATORS† | WEIGHT LBS (KGS) |
| EXB-664 N34 | 6x6x4 (152x152x102) | 2" | 7997-5 | 2 rows of 2 = 4 | 18 (8.17) |
| EXB-684 N34 ^② | 6x8x4 (152x203x102) | 2" | 7997-1 | 2 rows of 3 = 6 | 26.6 (12.08) |
| EXB-6124 N34 ^② | 6x12x4 (152x305x102) | 2" | 7997-6 | 4 rows of 2 = 8 | 70 (31.78) |
| EXB-886 N34 | 8x8x6 (203x203x152) | 2" | 7996-1 | 3 rows of 3 = 9 | 30 (13.62) |
| EXB-8104 N34 | 8x10x4 (203x254x102) | 2" | 7996-2 | 4 rows of 3 = 12 | 35 (15.89) |
| EXB-8106 N34 | 8x10x6 (203x254x152) | 2" | 7996-2 | 4 rows of 3 = 12 | 38 (17.25) |
| EXB-8126 N34 | 8x12x6 (203x305x152) | 3" | 17619 | 4 rows of 3 = 12 | 47 (21.34) |
| EXB-8128 N34 | 8x12x8 (203x305x203) | 4" | 17619 | 4 rows of 3 = 12 | 67 (30.42) |
| EXB-10106 N34 | 10x10x6 (254x254x152) | 3" | 17618 | 3 rows of 3 = 9 | 92 (41.77) |
| EXB-10108 N34 | 10x10x8 (254x254x203) | 5" | 17618 | 3 rows of 3 = 9 | 72 (32.69) |
| EXB-10146 N34 | 10x14x6 (254x356x152) | 3" | 17617 | 5 rows of 3 = 15 | 82 (37.23) |
| EXB-10148 N34 | 10x14x8 (254x356x203) | 5" | 17617 | 5 rows of 3 = 15 | 89 (40.41) |
| EXB-12126 N34 | 12x12x6 (305x305x152) | 3" | 7988-1 | 4 rows of 4 = 16 | 75 (34.05) |
| EXB-12128 N34 | 12x12x8 (305x305x203) | 5" | 7988-1 | 4 rows of 4 = 16 | 83 (37.68) |
| EXB-12186 N34 | 12x18x6 (305x457x152) | 3" | 15515 | 7 rows of 4 = 28 | 110 (49.94) |
| EXB-12188 N34 | 12x18x8 (305x457x203) | 5" | 15515 | 7 rows of 4 = 28 | 120 (54.48) |
| EXB-12246 N34 | 12x24x6 (305x610x152) | 3" | 7988-4 | 9 rows of 4 = 36 | 145 (65.83) |
| EXB-12248 N34 | 12x24x8 (305x610x203) | 5" | 7988-4 | 9 rows of 4 = 36 | 160 (72.64) |
| EXB-122412 N34 | 12x24x12 (305x610x305) | 5" | 7988-4 | 9 rows of 4 = 36 | 190 (86.26) |
| EXB-12368 N34 | 12x36x8 (305x914x203) | 5" | 17620 | 14 rows of 4 = 56 | 231 (104.87) |
| EXB-123610 N34 | 12x36x10 (305x914x254) | 6" | 17620 | 14 rows of 4 = 56 | 245 (111.23) |
| EXB-14146 N34 | 14x14x6 (356x356x152) | 3" | 17621 | 5 rows of 5 = 25 | 121 (54.93) |
| EXB-14148 N34 | 14x14x8 (356x356x203) | 5" | 17621 | 5 rows of 5 = 25 | 136 (61.74) |
| EXB-16166 N34 | 16x16x6 (406x406x152) | 3" | 7995-1 | 6 rows of 6 = 36 | 127 (57.66) |
| EXB-16168 N34 | 16x16x8 (406x406x203) | 5" | 7995-1 | 6 rows of 6 = 36 | 138 (62.65) |
| EXB-16248 N34 | 16x24x8 (406x610x203) | 5" | 17622 | 8 rows of 5 = 40 | 251 (113.95) |
| EXB-162410 N34 | 16x24x10 (406x610x254) | 6" | 17622 | 8 rows of 5 = 40 | 266 (120.76) |
| EXB-18186 N34 | 18x18x6 (457x457x152) | 3" | 17623 | 6 rows of 6 = 36 | 206 (93.52) |
| EXB-18188 N34 | 18x18x8 (457x457x203) | 5" | 17623 | 6 rows of 6 = 36 | 220 (99.88) |
| EXB-18248 N34 | 18x24x8 (457x610x203) | 5" | 15516 | 9 rows of 7 = 63 | 240 (108.96) |
| EXB-182410 N34 | 18x24x10 (457x610x254) | 6" | 15516 | 9 rows of 7 = 63 | 260 (118.04) |
| EXB-18308 N34 ^② ^③ | 18x30x8 (457x762x203) | 5" | 22061 | 11 rows of 7 = 77 | 320 (145.28) |
| EXB-18368 N34 | 18x36x8 (457x914x203) | 5" | 15517 | 13 rows of 7 = 91 | 380 (172.52) |
| EXB-183610 N34 | 18x36x10 (457x914x254) | 6" | 15517 | 13 rows of 7 = 91 | 405 (183.87) |
| EXB-203611 N34 | 20x36x11 (508x914x279) | 6" | 17596 | 13 rows of 7 = 91 | 540 (245.16) |
| EXB-24248 N34 | 24x24x8 (610x610x203) | 5" | 8000-1 | 9 rows of 9 = 81 | 330 (149.82) |
| EXB-242410 N34 | 24x24x10 (610x610x254) | 6" | 8000-1 | 9 rows of 9 = 81 | 350 (158.90) |
| EXB-24308 N34 | 24x30x8 (610x762x203) | 5" | 20567 | 9 rows of 7 = 63 | 430 (195.22) |
| EXB-24368 N34 | 24x36x8 (610x914x203) | 5" | 17624 | 11 rows of 7 = 77 | 531 (241.07) |
| EXB-243610 N34 | 24x36x10 (610x914x254) | 6" | 17624 | 11 rows of 7 = 77 | 506 (229.72) |

