

Condulet® Single Gang Cast Device Boxes

With and Without Mounting Lugs for Threaded Rigid and IMC Conduit

Application:

- Cast device boxes are installed to:
- accommodate wiring devices
 - act as pull boxes for conductors in a conduit system
 - provide openings to make splices and taps in conductors
 - provide access to conductors for maintenance and future system changes
 - connect conduit sections
 - FSY boxes for mounting surface devices on floor or bench (used with single gang covers)

Features:

- Internal green ground screw standard on boxes
- Suitable for use in wet locations when used with gasketed covers
- Mounting lugs standard on most boxes
- Tapered threaded hubs (NPT) with integral bushing
- Available for surface mounting (with mounting lugs) or flush mounting (without mounting lugs) as listed
- Available as shallow (FS) or deep (FD) configuration. Use FD if device to be enclosed exceeds 1 5/8" in depth
- Ample wiring room provided in either FS or FD configuration
- Wide selection of surface or flush covers available in three materials (sheet steel, *Feraloy*®, aluminum)
- Covers for flush mounting extend to conceal the rough plaster line
- Available in single gang and multi-gang configurations with hubs, and as blank bodies for drilled and tapped openings

Standard Materials:

- *Feraloy* iron alloy or copper-free aluminum.

Standard Finishes:

- *Feraloy* – electrogalvanized and aluminum acrylic paint
- Aluminum – natural

Options:

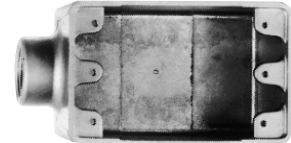
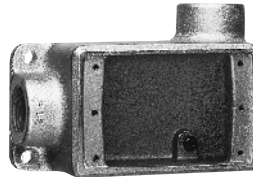
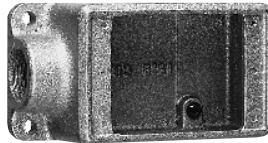
- Finishes:
Corro-free™ epoxy powder coat – add suffix S752

Size Ranges:

- Hubs – 1/2" to 1"

Certifications and Compliances:

- UL Standard: 514
- ANSI Standard: C33.84
- Fed. Spec.: W-C-5860
- CSA Standard: C22.2 No. 18



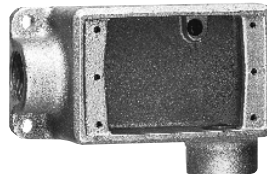
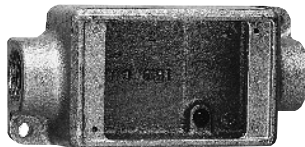
FS & FD

Size	Cat. #	Cat. #
1/2	FS1*	FD1**
3/4	FS2*	FD2**
1	FS3**	FD3**

Size	Cat. #	Cat. #
1/2	FSR1	FDR1
3/4	FSR2	FDR2**

Die Cast Aluminum†

Size	Cat. #	Cat. #
1/2	FS1-SA	FSC1-SA
3/4	FS2-SA	FSC2-SA



Size	Cat. #	Cat. #
1/2	FSC1*	FDC1**
3/4	FSC2*	FDC2**
1	FSC3**	FDC3**

Size	Cat. #	Cat. #
1/2	FSL1	FDL1
3/4	FSL2	FDL2**

† Mounting lugs and ground screw are not offered with standard die cast box – add suffix SCA to Cat. No. for sand cast aluminum box with mounting lugs and ground screw. (Example: FS1-SCA)

* Available in sandcast copper-free aluminum – add suffix SCA to Cat. No.

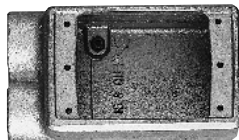
** Available in sandcast copper-free aluminum – add suffix SA to Cat. No.

With and Without Mounting Lugs for Threaded Rigid and IMC Conduit



FS & FD

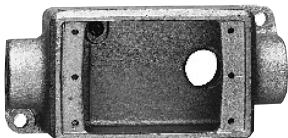
Size	Cat. # †	Cat. # †
1/2	FSA1	FDA1
3/4	FSA2	FDA2



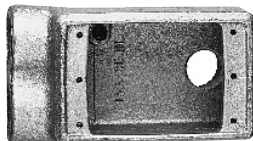
Size	Cat. #†	Cat. #†
1/2	FSS1*	FDD1
3/4	FSS2*	FDD2*
1	FSS3	FDD3



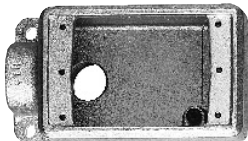
Size	Cat. #	Cat. #
1/2	FSCC1	FDCC1
3/4	FSCC2	FDCC2



Size	Cat. #
1/2	FSCA1
3/4	FSCA2

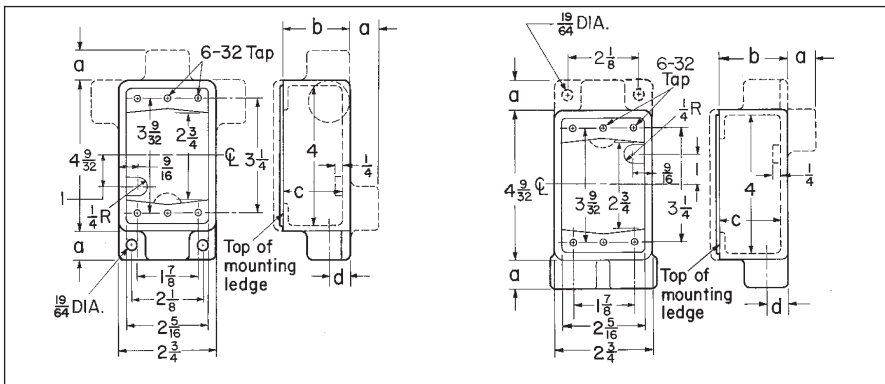


Size	Cat. #†
3/4	FSSA2



Size	Cat. #	Cat. #
1/2	FSLA1	FDLA1
3/4	FSLA2*	FDLA2

Dimensions



Series	Hub Size	a	b	c	d
FS	1/2	7/8	1 7/8	1 11/16	5/8
	3/4	7/8	1 7/8	1 11/16	3/4
	1	1	1 7/8	1 11/16	7/8
FD	1/2	7/8	2 11/16	2 1/2	5/8
	3/4	7/8	2 11/16	2 1/2	3/4
	1	1	2 11/16	2 1/2	7/8

* Available in copper-free aluminum; add suffix "SA".
 † Mounting lugs not available.