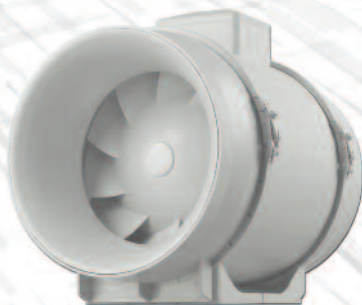
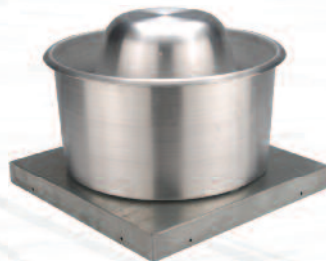


CFMTM
CONTINENTAL FAN

Wholesale Ventilation Products



... better AIRFLOW by DESIGN!

AXP IN-LINE DUCT FANS

AXP In-Line Duct Fans are designed for residential, commercial and light industrial ventilation applications. The quiet and efficient backward-curved motorized impeller is capable of developing significant pressure, and the in-line configuration simplifies installation.

FEATURES & BENEFITS

- UV and corrosion resistant, durable plastic housing
- 120V operation, other voltages available
- Easy to install - mounting brackets included
- May be mounted in any position
- Fans may be used to supply or exhaust air
- Suitable for air temperatures up to 122 F
- Energy efficient - speed controllable (optional solid state speed control)
- Optional pre-wired with 120V power cord (AXP-C)
- Exceptionally quiet and efficient BC centrifugal motorized impeller
- External rotor motor design results in superior motor cooling and durability
- Permanently lubricated ball bearing motor for maintenance-free operation
- Automatic reset thermal overload protection
- Fan and motor are precision balanced for quiet and vibration-free operation
- Easily accessible, external junction box with pre-wired capacitor
- Available to fit duct sizes 4" - 12"; airflow capacity to 837 cfm

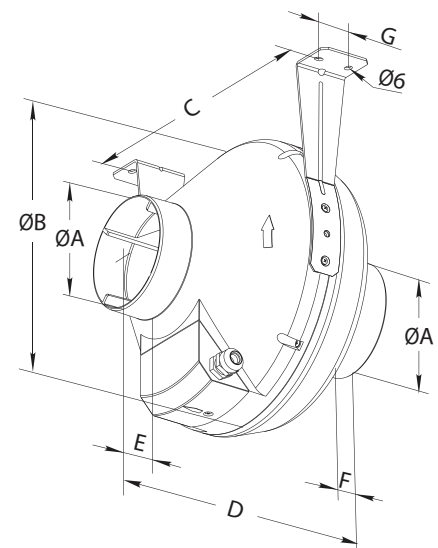


ACCESSORIES / OPTIONS

- Controls - pages 36-37
- Decorative grilles - page 38
- Accessories - pages 38-39

MODEL	RPM	WATTS	AIRFLOW PERFORMANCE (CFM)					
			0" SP	0.2" SP	0.5" SP	0.75" SP	1.0" SP	1.5" SP
AXP100	3088	106	162	150	134	120	104	67
AXP125	2960	114	235	214	178	151	123	72
AXP150	2907	113	317	289	247	212	178	68
AXP200	2650	142	583	544	462	390	320	196
AXP250	2604	293	735	675	588	507	432	307
AXP300	2741	271	837	772	659	564	474	307

MODEL	DUCT DIA.	DIMENSIONS IN INCHES*							SHIP WT (LBS)
		ØA	ØB	C	D	E	F	G	
AXP100	4"	3.9	9.8	10.6	9.1	1.2	1.1	1.2	7.0
AXP125	5"	4.9	9.8	10.6	8.7	1.2	1.1	1.2	7.0
AXP150	6"	5.9	11.8	12.2	11.3	1.2	1.2	1.2	8.0
AXP200	8"	7.9	13.4	13.9	10.9	1.2	1.2	1.6	9.0
AXP250	10"	9.8	13.4	13.9	10.4	1.2	1.2	1.6	12.0
AXP300**	12"	12.3	15.8	16.3	16.3	1.6	2.2	1.6	14.0



*DO NOT USE FOR CONSTRUCTION

CONSULT FACTORY FOR CERTIFIED PRINTS

**INCLUDES 2 DUCT REDUCERS TO FIT 12" DUCT

